

**APPENDIX D**  
**CULTURAL RESOURCES ASSESSMENT**

# **CULTURAL RESOURCES ASSESSMENT**

**SUN MESA MINI STORAGE PROJECT  
TOWN OF YUCCA VALLEY  
SAN BERNARDINO COUNTY, CALIFORNIA**

**LSA**

August 2025

# CULTURAL RESOURCES ASSESSMENT

**SUN MESA MINI STORAGE PROJECT  
TOWN OF YUCCA VALLEY  
SAN BERNARDINO COUNTY, CALIFORNIA**

Prepared for:

Daniel R. Patneau  
DRP Enterprises LLC  
P.O. Box 4428  
Palm Springs, California 92263

Prepared by:

Riordan Goodwin, RA, and Cassidy Sharp, RPA  
LSA  
1500 Iowa Avenue, Suite 200  
Riverside, California 92507  
(951) 781-9310

LSA Project No. 20252490

**National Archaeological Data Base Information:**

*Type of Study:* Records Search, Archaeological Survey  
*USGS Quadrangle:* Yucca Valley North, California  
*Acreage:* 4.34



August 2025

## MANAGEMENT SUMMARY

LSA conducted a cultural resources assessment for the Sun Valley Mini Storage Project located in the Town of Yucca Valley, San Bernardino County, California. The assessment included a records search, archival research, field surveys, and this report. The subject property is approximately 5 acres. As the Lead Agency for the project, the Town of Yucca Valley (Town) required this study as part of the environmental review process to comply with the California Environmental Quality Act (CEQA).

The purpose of the study is to provide the County with the necessary information and analysis to determine, as mandated by CEQA, whether the proposed project would cause substantial adverse changes to any historical/archaeological resources that may exist in or around the project area. In order to identify and evaluate such resources, LSA conducted a historical/archaeological resources records search, pursued historical background research, and carried out pedestrian field surveys.

Through the various avenues of research, this study did not identify cultural resources within or adjacent to the project area. However, a prehistoric resource was documented less than 0.33 mile away, and approximately half of the project area surface was not visible. Therefore, the project parcel retains some potential for in situ subsurface cultural resources, and archaeological monitoring may be considered.

If buried cultural materials are encountered during earthmoving operations associated with the project, all work in that area should be halted or diverted until a qualified archaeologist can evaluate the nature and significance of the finds.

In the event human remains are encountered, State Health and Safety Code Section 7050.5 states that no further disturbance shall occur until the County Coroner has made a determination of origin and disposition pursuant to Public Resources Code Section 5097.98. The County Coroner must be notified of the find immediately. If the remains are determined to be Native American, the County Coroner will notify the Native American Heritage Commission (NAHC), which will determine and notify a Most Likely Descendant (MLD). With the permission of the landowner or his/her authorized representative, the MLD may inspect the site of the discovery. The MLD shall complete the inspection within 48 hours of notification by the NAHC. The MLD will have the opportunity to offer recommendations for the disposition of the remains.

## TABLE OF CONTENTS

MANAGEMENT SUMMARY .....	i
<b>INTRODUCTION .....</b>	<b>1</b>
Project Location.....	1
Project Description.....	1
<b>SETTING.....</b>	<b>4</b>
Current Natural Setting .....	4
Climate and Watershed.....	4
Flora and Fauna .....	4
Geology.....	4
Cultural Setting.....	4
Prehistory .....	4
Ethnography .....	5
History .....	6
Methods .....	7
Records Search .....	7
Additional Research.....	7
Archaeological Field Survey.....	7
<b>RESULTS .....</b>	<b>8</b>
Records Search .....	8
Additional Research.....	8
Archaeological Field Survey.....	8
<b>RECOMMENDATIONS .....</b>	<b>9</b>
<b>REFERENCES .....</b>	<b>10</b>
<b>FIGURE</b>	
Figure 1: Regional and Project Location.....	3
<b>APPENDIX</b>	
A: PERSONNEL QUALIFICATIONS	
B: RECORDS SEARCH BIBLIOGRAPHY	

## INTRODUCTION

At the request of Mr. Daniel R. Patneau, LSA performed a cultural resources study on 4.34 acres of land in the Town of Yucca Valley, San Bernardino County, California (see Figure 1). The subject property of the study, Assessor's Parcel Number (APN) 0597-111-67, is located at 4815 Newton Lane in Township 1 North, Range 5 East, Section 13, San Bernardino Baseline and Meridian, as depicted on the United States Geological Survey (USGS) *Yucca Valley North, California* 7.5-minute topographic quadrangle map. The study is part of the environmental review process for residential development. The County of San Bernardino (County), as Lead Agency for the project, required the study in compliance with the California Environmental Quality Act (CEQA) (Public Resources Code [PRC] § 21000, et seq.).

LSA performed the present study to provide the County with the necessary information and analysis to determine, as mandated by CEQA, whether the proposed project would cause substantial adverse changes to any historical/archaeological resources that may exist in or around the project area. In order to identify and evaluate such resources, LSA conducted a historical/archaeological resources records search, pursued historical background research, and carried out pedestrian field surveys. This report is a complete account of the methods, results, and final conclusion of the study.

## PROJECT LOCATION

The proposed Sun Mesa (Billings) Mini Storage development project site is located on Assessor's Parcel Number 0597-11-067, which is east of State Route 247 (SR-247) and north of Buena Vista Drive in the Town of Yucca Valley in San Bernardino County, California. The 4.34-acre project site is currently undeveloped. Access to the project site is provided by Buena Vista Drive, Sun Mesa Drive, and Newton Lane. Figure 1 (all figures provided in Attachment B) shows the project location.

## PROJECT DESCRIPTION

The proposed project would involve the development of a 19-building, 89,700 total square foot (sf) mini storage facility. The site would be bounded by a maximum 10-foot (ft) high security fence and would consist of 18 storage buildings ranging from 4,800 to 7,500 sf in size evenly distributed around the site and one 400 sf manager's unit building. Two gated access driveways would be located along Newton Lane on the west side of the site. The manager's unit would be located at the northern entry gate. Additionally, outdoor parking stalls would be located on the north and east sides of the proposed manager's unit building. These parking areas would accommodate approximately 10 vehicles. A 5,911 sf retention basin would be located on the southwest corner of the project site. The proposed project would include associated site improvements including new internal roadways and utility improvements. Hours of operation of the proposed project would be between the hours of 6:00 a.m. and 10:00 p.m. 7 days per week.

The maximum depth of excavation for construction would be approximately 7 ft below the ground surface. Connections to utilities may require additional excavation up to 15 ft below the ground surface at limited locations on site. Construction is anticipated to begin later than the fall of 2024 and is anticipated to be completed within 12 months.



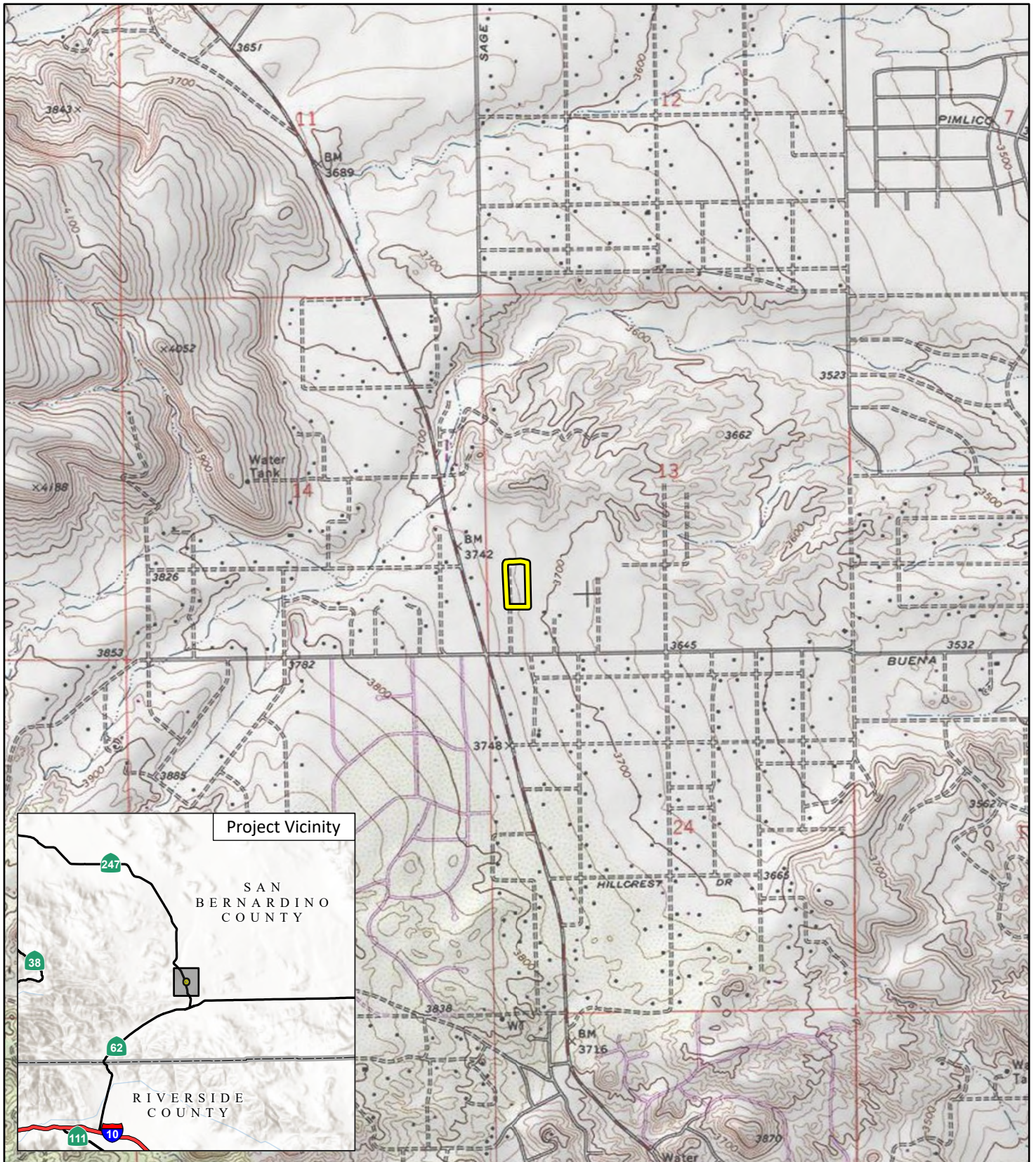



FIGURE 1

LSA

 Project Area



0 1000 2000  
FEET

SOURCE: USGS 7.5' Quad - Yucca Valley North (1989), CA

J:\20231230\GIS\Pro\Sun Mesa Mini Storage Project\Sun Mesa Mini Storage Project.aprx (11/16/2023)

Sun Mesa (Billings) Mini Storage Project  
Project Location



## SETTING

### CURRENT NATURAL SETTING

#### Climate and Watershed

The project region is characterized by an arid climate, with dry, hot summers and moderate winters. Rainfall averages from 4.57 inches annually. Precipitation usually occurs in the form of winter rain, with warm monsoonal showers in summer. The project area is bracketed by two ephemeral drainages, which drain to the east.

#### Flora and Fauna

At an elevation of approximately 3,720 feet, the project is just within the Upper Sonoran Life Zone of California (Schoenherr 1992), which ranges from below sea level to 3,500 to 7,000 feet. Creosote, cholla, Joshua tree, and other native species were noted on the property. Extensive fauna are known locally, including many endemic species of reptiles, birds, and insects.

#### Geology

The project is located in the Mojave Desert Geomorphic Province, which forms an elevated alluvial plain with large expanses of desert punctuated by isolated mountain ranges (California Geological Survey 2002; Norris and Webb 1976). This province is located on a wedge-shaped fault block bounded by the San Andreas Fault Zone and Transverse Ranges to the southwest and the Garlock Fault Zone and Tehachapi Mountains to the north (California Geological Survey 2002; Norris and Webb 1976). Because the province extends into Nevada, the state line forms the eastern boundary for California (California Geological Survey 2002; Norris and Webb 1976). Precambrian through Mesozoic igneous, metamorphic, and sedimentary rocks comprise the basement and many of the mountains ranges throughout the province, while Cenozoic sedimentary and igneous rocks fill the basins, line the flanks of the mountain ranges, and form subordinate features (Norris and Webb 1976; Sharp 1976). The province has an enclosed drainage with many playas, or dry lakes, that currently only fill with water for a short period of time during storm events (California Geological Survey 2002; Sharp 1976). During the Pleistocene, however, these dry lakes may have been filled with water year-round (Norris and Webb 1976).

### CULTURAL SETTING

#### Prehistory

Chronologies of prehistoric cultural change in Southern California area have been attempted numerous times, and several are reviewed in Moratto (2004). No single description is universally accepted as the various chronologies are based primarily on material developments identified by researchers familiar with sites in a particular region and variation exists essentially due to the differences in those items found at the sites. Small differences occur over time and space, which combine to form patterns that are variously interpreted.

Currently, two primary regional culture chronology syntheses are commonly referenced in the archaeological literature. The first chronology, developed by Wallace in 1955, describes four cultural



horizons or time periods: Horizon I – Early Man (9000–6000 BC), Horizon II – Milling Stone Assemblages (6000–3000 BC), Horizon III – Intermediate Cultures (3000 BC–AD 500), and Horizon IV – Late Prehistoric Cultures (AD 500–historic contact). This chronology was refined by Wallace in 1978 using absolute chronological dates obtained after 1955.

The second cultural chronology, developed by Warren in 1968, is based broadly on Southern California prehistoric cultures and was also later revised (Warren 1984; Warren and Crabtree 1986). Warren’s revised chronology includes five periods in prehistory: Lake Mojave (7000–5000 BC), Pinto (5000–2000 BC), Gypsum (2000 BC–AD 500), Saratoga Springs (AD 500–1200), and Protohistoric (AD 1200–historic contact). Changes in settlement pattern and subsistence focus are viewed as cultural adaptations to a changing environment. These environmental changes began with gradual warming in the late Pleistocene, continued with the desiccation of the desert lakes followed by a brief return to pluvial conditions, and concluded with a general warming and drying trend, with periodic reversals that continue to the present (Warren and Crabtree 1986).

### Ethnography

The project area is within the traditional cultural territory of the Serrano (Bean and Smith 1978). Like other Native American groups in Southern California, the Serrano were seminomadic hunter-gatherers who subsisted by exploitation of seasonably available plant and animal resources. They were first encountered by the Spanish missionaries in the late 18th century. The first written accounts of the Serrano are attributed to the mission fathers; later documentation was by Benedict (1924), Kroeber (1925), Strong (1929), and others.

Ethnohistorically, the Serrano Indians occupied portions of the central and western Mojave Desert, including the length of the Mojave River and much of present-day San Bernardino County and northeastern Los Angeles County (Sutton and Earle 2017). The term Serrano is Spanish for “mountaineer, highlander” (Bean and Smith 1978) and is derived from *sierra*, meaning “mountain range” (Bean and Smith 1978). This term was given to people who inhabited the areas of the San Bernardino Mountains that had no associated mission. The Serrano culture group actually incorporates distinct cultures of people that have similar linguistic patterns. These people are the Desert Serrano and the Mountain Serrano (Sutton and Earle 2017).

The Serrano were hunter-gatherers who relied on the women to do much of the collecting while the men captured various animals. The primary flora that they exploited depended on the exact area they inhabited but, generally speaking, they collected acorns, pinion nuts, honey, mesquite, yucca, and cactus fruits, in addition to various seeds, bulbs, and roots. The men hunted hare, rabbits, and rodents as the basis of their animal protein along with pronghorn, desert bighorn, and deer (Sutton and Earle 2017).

The most common hunting implements were the bow and arrow, throwing stick, traps, snares, and deadfalls. The bow and arrow were used for hunting large game, while the other items were used for smaller game and birds (Bean and Smith 1978). Meat was prepared in earth ovens, by boiling in watertight baskets, or by parching. Plants were consumed both raw and cooked. Food processing involved the use of manos, metates, mortars, and pestles. Flint knives, stone and bone scrapers,

ceramic trays and bowls, baskets, and horn and bone spoons and stirrers were also used (Bean and Smith 1978).

Most Serrano lived in small villages near water, primarily the Mojave River (Sutton and Earle 2017), and also perennial seeps, streams, and small lakes. The availability of water largely determined the nature, duration, and distribution of Serrano settlements (Benedict 1924 in Bean and Smith 1978). Family dwellings were circular, domed, willow-frame structures covered with tule thatching (Bean and Smith 1978). Dwellings contained a central fire pit and were used primarily for sleeping and storage.

The Late Prehistoric natives of the Serrano area practiced cremation of the dead. Most of a deceased individual's personal possessions were burned with the body. One month after death, other possessions were burned. A seven-day mourning ceremony was held annually. At this time, gifts and shell money were distributed (Strong 1929 in Bean and Smith 1978).

With the Spanish intrusion came a drastic change in lifestyle for the natives of Southern California. Incorporation of the indigenous populations into the mission system led to the disruption of native cultures and changes in subsistence and land use practices. Mission San Gabriel, established in 1771, probably had a limited effect on the Serrano population until the asistencia was established near Redlands, perhaps as early as 1819 (Harley 1988). Cattle ranches/farms were established on or near Indian villages, primarily in the major drainages conducive to horticulture and animal husbandry. Within a short time, the missions controlled many ranchos where Indians lived and worked.

After 1820, most of the Serrano in the San Bernardino Valley were moved to Mission San Gabriel. Land near ancestral villages was cleared for farming and water was diverted for irrigation and stock. The mission's expansion drastically affected native plants and animals, and human populations were decimated by European introduced diseases, conflicts, and forced labor. Further declines in local population occurred as the Native Americans retreated to isolated sanctuaries in the mountains (Bean and Smith 1978).

## History

In California, the historic era is generally divided into three periods: the Spanish Period (1769–1821), the Mexican Period (1821–1848), and the American Period (1848–present). As there were no resources within the project area, the historic context will focus on the County and local community during the American Period.

San Bernardino County was created from parts of Los Angeles and San Diego Counties in 1853. In 1854, the City of San Bernardino was incorporated as the County Seat. Produce ultimately assumed prominence as the County's economic base, with tens of thousands of acres under cultivation by the beginning of World War I (McGroarty 1914).

### *Yucca Valley*

The remote region of the Mojave Desert that includes the area that would become the community of Yucca Valley was initially explored for watering holes and transportation routes by individuals such as Paulino Weaver, who pioneered a route for cattle in the early 1850s. The "Morongo Pass

and Route 62 ran through Morongo and Yucca Valleys to the Oasis of Mara (Twentynine Palms) and ultimately to the Colorado River. State Route 62 follows much of this original route (Warren and Roske 1981). Cattle were driven from Arizona and New Mexico into Yucca Valley for spring pasturage for a few years during the 1870s (Brock and Elliot 1987). By the early 1910s, the first local homesteads were established on 160-acre tracts under the provisions of the Homestead Act of 1862 (O'Neal 1980; Garrett 1992). Homesteading continued in the area, primarily for the purposes of cattle ranching, until the end of the Depression era (Wilson and Grubb 1984).

From the early 1920s, the community that would become Yucca Valley was initially known as Lone Star, for Walter Harrell's Lone Star Ranch that introduced the first gas pump to the Valley (Wilson and Grubb 1984, Hernandez 2005). By the end of World War II, the local population had increased to the point of warranting their own post office, which was established in 1945 (Wilson and Grubb 1984). Three thousand acres were purchased that same year by the Yucca Village Company, subdivided the following year, water service was acquired and the area was tentatively named Yucca Village in 1947 (Wilson and Grubb 1984, Hernandez 2005). The community grew in the ensuing decades but the name was ultimately unsatisfactory, and the community was incorporated as Yucca Valley in 1991 (Hernandez 2005).

## METHODS

### Records Search

On July 11, 2024, a cultural resources records search was conducted for the current project area at the South Central Coastal Information Center (SCCIC) at California State University, Fullerton. The SCCIC houses the pertinent archaeological site and survey information necessary to determine whether cultural resources are recorded within the study area boundaries and which specific areas have been previously surveyed. The research included a review of all recorded historic and prehistoric archaeological sites within one mile of the project, as well as a review of known cultural resource survey and excavation reports.

### Additional Research

In July 2024, Mr. Goodwin reviewed online historic period aerial photographs (NETR Online 2024) and USGS (United States Geological Survey) topographic maps (*Yucca Valley North*, Calif. 7.5 minute quadrangle, 1989, 1975, 1965, 1958, and 1957).

### Archaeological Field Survey

On July 20, 2024, LSA Archaeologist Cassidy Sharp surveyed the project area for any cultural residues (prehistoric or historic artifacts, deposits, or features). Linear transects at 10-meter intervals were utilized to systematically examine the surface. Particular attention given to all areas of potentially native (undisturbed) soils, exposed rocks, and rodent back dirt.

---

## RESULTS

### RECORDS SEARCH

Data from the SCCIC indicate there have been 16 previous cultural resources studies conducted within the 1-mile study radius, none of which included portions of the project area (see Appendix A). Although no cultural resources have been recorded within or near the project area, three are documented within 1 mile: one prehistoric resource (36-002379, an artifact scatter), and two historic period resources (36-027695, a 1950s residence at 4451 Old Woman Springs Road and 36-010716, a segment of Old Woman Springs Road, a route dating to the 19<sup>th</sup> century). The historic period road (36-010716) is the nearest historic resource to the project site, approximately 160 meters/530 feet to the west, and the nearest prehistoric resource (36-002379) is approximately 0.29 mile southwest of the project site.

### Additional Research

No buildings or structures were present within the project area in historic period aerial photos or indicated on maps (NETR Online 2024).

### ARCHAEOLOGICAL FIELD SURVEY

The field survey revealed that there was light disturbance in the area from foot and bicycle traffic. Overall visibility was poor, at approximately 50 percent with the surface substantially obscured by vegetation. Access was not inhibited by vegetation. Soils are sandy alluvial silt. Trace historic period isolated rusted cans were noted. Concrete debris were noted, along with modern refuse throughout the project area. No cultural resources were identified.

---

## RECOMMENDATIONS

Through the various avenues of research, this study did not identify cultural resources within or adjacent to the project. However, a prehistoric resource was documented less than 0.33 mile away, and approximately half of the project area surface was not visible. Therefore, the project parcel retains some potential for in situ subsurface cultural resources, and archaeological monitoring may be considered.

If archaeological materials are encountered during construction, all construction work should be halted and a qualified archaeologist consulted to determine the appropriate treatment of the discovery (California Code of Regulations, Title 14, Chapter 3, Section 15064.5(f)).

If human remains are encountered, State Health and Safety Code Section 7050.5 states that no further disturbance shall occur until the County Coroner has made a determination of origin and disposition pursuant to PRC Section 5097.98. The County Coroner must be notified of the find immediately. If the remains are determined to be Native American, the County Coroner will notify the Native American Heritage Commission (NAHC), which will determine and notify a Most Likely Descendant (MLD). With the permission of the landowner or his/her authorized representative, the MLD may inspect the site of the discovery. The MLD shall complete the inspection within 48 hours of notification by the NAHC. The MLD will have the opportunity to offer recommendations for the disposition of the remains.



---

## REFERENCES

Bean, Lowell John, and Charles R. Smith

- 1978 Serrano. In *California*, edited by R.F. Heizer, pp. 570–574. *Handbook of North American Indians*, vol. 8, W.C. Sturtevant, general editor, Smithsonian Institution, Washington, D.C.

Benedict, Ruth F.

- 1924 A Brief Sketch of Serrano Culture. *American Anthropologist* 26 (3).

Brock, James, and John F. Elliot

- 1987 A Cultural Resources Assessment of Joshua Basin Water District's Assessment District Number 87-1, San Bernardino County, California. Unpublished manuscript on file at South Central Coastal Information Center (SCCIC) at California State University, Fullerton.

California Geological Survey

- 2002 *California Geomorphic Provinces*. California Geologic Survey Note 36. California Department of Conservation.

Garrett, Lewis

- 1992 Postal History of San Bernardino County. *San Bernardino County Museum Association Quarterly*.

Harley, R. Bruce

- 1988 Rev. Juan Caballeria: Historian or Storyteller? Rethinking the 1810 Dumetz Expedition. *San Bernardino County Museum Quarterly* 35(2), 42 p.

Hernandez, Barbara E.

- 2005 *Shaking the dust off its cowboy boots*. Los Angeles Times, January 30.

NETR Online

- 2024 Various historic period aerial photograph showing the project area. Website: <https://historicaerials.com/> (accessed July 2024).

Kroeber, Alfred L.

- 1925 *Handbook of the Indians of California*. Bureau of American Ethnology Bulletin No. 78 Washington D.C.: Smithsonian Institute. Reprinted in 1976, New York: Dover Publications.

McGroarty, John Steven

- 1914 Southern California. Southern California Panama Exposition Commission.

Moratto, Michael J.

- 2004 *California Archaeology*. Orlando, Florida: Academic Press. Reprinted by Coyote Press in 2004.

Norris, R.M., and R.W. Webb

- 1976 *Geology of California*, John Wiley and Sons, Inc., Santa Barbara.

O'Neal, Lulu Rasmussen

1980 *A Peculiar Piece of Desert: The Story of California's Morongo Basin*. Sagebrush Press.

Schoenherr, Allan A.

1992 *A Natural History of California*. University of California Press, Berkeley and Los Angeles.

Sharp, R.P.

1976 *Geology: Field Guide to Southern California*, Kendall/Hunt Publishing Company, Second Edition: 181.

Strong, William D.

1929 Aboriginal Society in Southern California. *University of California Publications in American Archaeology and Ethnology* 26(1): 1–358. Berkeley.

Sutton, Mark Q., and David D. Earle

2017 The Desert Serrano of the Mojave River. *Pacific Coast Archaeological Society Quarterly*, Volume 53, Numbers 2 and 3.

United States Geological Survey Topographic Maps

1957 *Yucca Valley North*, Calif. 7.5 minute quadrangle.

1958 *Yucca Valley North*, Calif. 7.5 minute quadrangle.

1965 *Yucca Valley North*, Calif. 7.5 minute quadrangle.

1975 *Yucca Valley North*, Calif. 7.5 minute quadrangle.

1989 *Yucca Valley North*, Calif. 7.5 minute quadrangle

Wallace, William J.

1955 A Suggested Chronology for Southern California Coastal Archaeology. *Southwestern Journal of Anthropology* 11(3):214–230.

1978 Post-Pleistocene Archaeology. In California, edited by R. Heizer, pp. 550–563. *Handbook of North American Indians*, Vol. 8. W.C. Sturtevant, general editor. Smithsonian Institution, Washington, D.C.

Warren, Claude N.

1968 Cultural Tradition and Ecological Adaptation on the Southern California Coast. *Eastern New Mexico University Contributions in Anthropology* 1(3). Portales.

1984 The Desert Region. In *California Archaeology*, by M. Moratto with contributions by D.A. Fredrickson, C. Raven, and C. N. Warren, pp. 339–430. Academic Press, Orlando, Florida.

Warren, Claude N., and Robert H. Crabtree

1986 Prehistory of the Southwestern Area. In W.L. D'Azevedo ed., *Handbook of the North American Indians*, Vol. 11, Great Basin, pp. 183–193. Washington D.C.: Smithsonian Institution.

---

Warren, Elizabeth von Till, and Ralph J. Roske

1981 Cultural Resources of the California Desert, 1776–1980: Historic Trails and Wagon Roads.

Wilson, Joan and Charlene Grubb

1984 The Heritage of Yucca Valley, California Including Giant Rock. Yucca Valley Chamber of Commerce

---

# APPENDIX A

## PERSONNEL QUALIFICATIONS



### EXPERTISE

- Historical and Military Archaeology
- Historical Research
- Phase I Surveys
- Phase II Test Excavation Programs
- Cultural Resources Monitoring
- Native American Consultation

### EDUCATION

Anthropology Graduate Program, San Diego State University, 1993

B.A. in Anthropology, San Diego State University, 1987

Undergraduate Studies, Palomar Community College, San Marcos, California, 1984-1986

### PROFESSIONAL EXPERIENCE

Archaeologist, Laboratory Manager, Field Supervisor, Project Manager, Paleontological Technician, LSA, Riverside, California, 2001–Present

Senior Archaeologist, Earth Tech, Colton, California, 2000

Staff Archaeologist/Historian, Archaeological Resource Management, San Jose, California, 1998–2000

Field Archaeologist, Archaeor, Mission San Jose, California, 1998

### PROFESSIONAL RESPONSIBILITIES

Mr. Goodwin has extensive experience as Principal Investigator, Co-principal Investigator, and contributing specialist on cultural resource assessments, historic architectural evaluations, constraints analyses, Phase II testing, and Phase III data recovery programs. He has written, co-written, contributed to and peer-reviewed CEQA and National Historic Preservation Act (NHPA) Section 106-level California Office of Historic Preservation (OHP) and Caltrans-format cultural resource assessments, archaeological testing and monitoring reports, historic building inventories and evaluations, management plans, Historic American Buildings Survey/Historic American Engineering Record (HABS/HAER) documentation, and Department of Parks and Recreation (DPR) forms. His 33 years of experience includes both California Register of Historical Resources (California Register) and National Register of Historic Places (National Register)-level work in Riverside and San Bernardino counties involving survey, testing, data recovery, monitoring programs, and Native American consultation.

### PROJECT EXPERIENCE

Mr. Goodwin has performed hundreds of Phase I cultural resources assessments, which included resource documentation, and many Phase II archaeological testing programs for projects ranging in size from a fraction of an acre to more than 1,000 acres. Selected projects include the following.

#### AIRPORTS

##### CITY OF PALM SPRINGS, PALM SPRINGS INTERNATIONAL AIRPORT

###### Palm Springs, Riverside County, California

Mr. Goodwin conducted the Phase I field survey of World War II-era U.S. Army airfield features, documented historic period airfield features, updated resource documentation, assisted with architectural survey, prepared the report, and responded to comments from the Federal Aviation Administration.

##### City of Camarillo, Camarillo Airport Camarillo, Ventura County, California

Mr. Goodwin conducted historical research and contributed to the evaluation of Cold War-era built environment associated with Tactical Air Command activities at the airport.

#### ALTERNATIVE ENERGY

##### SUNPEAK SOLAR, LLC, CHUCKWALLA VALLEY SOLAR

###### Desert Center, Riverside County, California

Mr. Goodwin led the Phase I survey of more than 700 acres of former World War II-era U.S. Army training areas, documented prehistoric and historic-period resources, prepared draft district records, and coordinated with the Bureau of Land Management.



Staff Archaeologist, Holman & Associates, San Francisco, California, 1997

Staff Archaeologist/Historical Researcher, Computer Sciences Corporation, Edwards Air Force Base, California, 1994–1996

Staff Archaeologist, BFSA, Poway, California, 1989–1992

**PROFESSIONAL CERTIFICATIONS/ REGISTRATIONS**

Registered Archaeologist (RA)

**SPECIALIZED TRAINING**

BNSF Railway Safety Training

County of Riverside Cultural Sensitivity Training

HAZMAT 40 Hour

Unexploded Ordnance Awareness 8 hour

Desert Tortoise Awareness Training

**PROFESSIONAL AFFILIATIONS**

Register of Professional Archaeologists, Society for California Archaeology

report for this project.

**EDUCATION/INSTITUTIONAL**

**CITY OF PERRIS, CLEARWATER ELEMENTARY SCHOOL PROJECT**

**Perris, Riverside County, California**

Mr. Goodwin conducted the records search and Phase I field survey and prepared the report for this project.

**Perris Union High School District, Perris Union High School No. 4  
Riverside County, California**

Mr. Goodwin conducted the Phase I field survey, site record update, Phase II testing, laboratory analysis of prehistoric artifacts, protracted Native American consultation on behalf of Perris Union High School District, and prepared the report for this project. He also supervised the Phase IV monitoring program, prepared the monitoring report, and arranged for curation of the artifact collection with Pechanga Band of Luiseño Indians.

**COMMERCIAL DEVELOPMENT**

**OSI PARTNERSHIP I, LLC BANNING BUSINESS PARK PROJECT**

**Banning, Riverside County, California**

Mr. Goodwin conducted the Phase II testing program, documented and evaluated historic period resources, managed the laboratory, contributed to the report, and arranged for disposition of the artifact collection for this project.

**City of Murrieta, CarMax Murrieta Project  
Murrieta, Riverside County, California**

Mr. Goodwin conducted the record search and Phase I field survey, updated resource documentation, and prepared the report for this project.

**City of Murrieta, CVS Pharmacy Project  
Murrieta, Riverside County, California**

Mr. Goodwin conducted the records search and Phase I field survey, documented and evaluated resources, and prepared the report for this project.

**City of Murrieta, Murrieta Hot Springs  
Murrieta, Riverside County, California**

Mr. Goodwin conducted the record search, Phase I survey, site record update, Phase II archaeological testing, and laboratory analysis, and prepared the report for this project.

**County of Riverside, Alessandro Commerce Center  
Riverside County, California**

Mr. Goodwin assisted with the Phase I survey, conducted the Phase II testing program, supervised the monitoring program, coordinated with Native American tribes, updated resource recordation, and prepared the report.

**County of Riverside, Gateway Center Specific Plan  
Riverside County, California**

Mr. Goodwin led the Phase I field survey, updated prehistoric resource documentation, conducted Phase II testing, evaluated resources, conducted Native American consultation on behalf of the County, and prepared the

**INDUSTRIAL**

**CITY OF RIALTO, WILLOW AVENUE WAREHOUSE PROJECT**

**Rialto, San Bernardino County, California**

Mr. Goodwin conducted the record search and Phase I field survey and prepared the report for this project.

**City of Riverside, Cottonwood Warehouse Project  
Riverside, Riverside County, California**

Mr. Goodwin conducted the record search and Phase I field survey and prepared the report for this project.

**MISCELLANEOUS**

**BRENT ENGINEERING, RIVERSIDE PROJECT**

**Riverside County, California**

Mr. Goodwin coordinated the Phase I field survey, documented resources, conducted research and documentation, and prepared the report and follow-up revised report for this project.

**MIXED-USE**

**CITY OF INDIO, INDIO VARNER ROAD MIXED-USE PROJECTS**

**Indio, Riverside County, California**

Mr. Goodwin conducted the record search and Phase I field survey, and prepared the report for this project.

**NATIVE AMERICAN TRIBES**

**DESERT CAHUILLA AGRICULTURAL CORPORATION/TORRES-MARTINEZ DESERT CAHUILLA INDIANS, SMTc PROJECT**

**Riverside County, California**

Mr. Goodwin conducted the Phase I survey and research, coordinated with the president of the Torres-Martinez Desert Cahuilla Indians' Desert Cahuilla Agricultural Corporation, and prepared the report for this project.

**County of Riverside, SunCal, McSweeney Farms Residential Development  
Riverside County, California**

Mr. Goodwin participated in Phase II testing of prehistoric sites and coordinated disposition of the artifact collection with designated Most Likely Descendant, Soboba Band of Luiseño Indians.

**Perris Union High School District, Perris Union High School No. 4  
Riverside County, California**

Mr. Goodwin conducted the Phase I field survey, site record update, Phase II testing, laboratory analysis of prehistoric artifacts, protracted Native American consultation on behalf of Perris Union High School District, and prepared the report for this project. He also supervised the Phase IV monitoring program, prepared the monitoring report, and arranged for curation of the artifact collection with Pechanga Band of Luiseño Indians.

**Caltrans, State Route 210 Project  
San Bernardino, San Bernardino County, California**

Mr. Goodwin conducted the archaeological monitoring program, recovered prehistoric human remains, coordinated closely with Native American tribes and the County Coroner, and prepared a monitoring report in accordance with Caltrans Standard Environmental Reference guidelines, Section 106, and CEQA for District 8. Caltrans approved the report.

**United States Army Corps of Engineers, Monteolivo Project**  
**Corona, Riverside County, California**

Mr. Goodwin conducted the Phase I survey, research, and assisted with Section 106 Native American consultation on behalf of the United States Army Corps of Engineers. He documented historic period resources and prepared the report for this project.

**City of Hemet, Exchange Club Park**  
**Hemet, Riverside County, California**

Mr. Goodwin supervised and led the archaeological monitoring program, coordinated with Native American tribes and the County Inspector, and prepared the monitoring report.

**Caltrans and County of Riverside, Cajalco Road and Alexander Road Project**  
**Riverside County, California**

Mr. Goodwin supervised and led the archaeological monitoring program, conducted research, coordinated with Native American tribes, Caltrans, and the County Inspector, and prepared the monitoring report.

**County of Riverside, 42500 Washington Street Project**  
**Bermuda Dunes, California**

Mr. Goodwin conducted Native American scoping, cultural resources research, a record search and Phase I field survey, coordinated with the County of Riverside and other consultants, and prepared the report.

**County of Riverside, Briggs Road Improvements at Warm Springs**  
**Riverside County, California**

Mr. Goodwin supervised and led the archaeological monitoring program, coordinated with Native American tribes and the County Inspector, and prepared the monitoring report.

**County of Riverside, Gateway Center Specific Plan**  
**Riverside County, California**

Mr. Goodwin led the Phase I field survey, updated prehistoric resource documentation, conducted Phase II testing, evaluated resources, conducted Native American consultation on behalf of the County of Riverside, and prepared the report.

**County of Riverside, Santa Ana River Trail Project**  
**Riverside County, California**

Mr. Goodwin conducted the Phase I survey, research, assisted the County of Riverside with Native American consultation, documented and evaluated historic period resources, and prepared the report.

**PUBLIC AGENCIES**

**CITY OF MENIFEE, CHIC-FIL-A MENIFEE PROJECT**

**Riverside County, California**

Mr. Goodwin supervised and conducted the Phase IV cultural resources monitoring program, compiled the administrative record, provided logistical support, prepared the monitoring report.

**City of Menifee, Newport Towne Square II Project**  
**Riverside County, California**

Mr. Goodwin conducted the Phase I survey, research, prepared an assessment report, supervised and conducted the Phase IV cultural resources monitoring program, compiled the administrative record, and prepared the monitoring report.

**City of Menifee, Menifee Boulders Project**  
**Riverside County, California**

Mr. Goodwin conducted the Phase I survey, documented prehistoric resources, Native American consultation on behalf of Caltrans District 8, and prepared the Historic Property Survey Report (HPSR) and the Archaeological

Resources Report (ASR) in accordance with Caltrans Standard Environmental Reference guidelines, Section 106, and CEQA. Caltrans approved the HPSR and ASR.

**City of Menifee, Caliber Collision Body Shop Project**  
**Riverside County, California**

Mr. Goodwin conducted the Phase I field survey, prepared the report, coordinated with the City and responded to tribal comments for a revised report.

**City of Menifee, Boulders Mixed-Use Project**  
**Riverside County, California**

Mr. Goodwin conducted the Phase I survey, research, obtained Sacred Lands File search results from the NAHC and coordinated with tribes on behalf of the City, documented prehistoric resources and prepared the assessment report.

**City of Menifee, Menifee Valley Specific Plan Project**  
**Riverside County, California**

Mr. Goodwin peer-reviewed a Phase I assessment and conducted follow-up on response to comments.

**County of Sonoma, Adobe Road and Main Street Intersection Improvements Project**  
**Sonoma County, California**

Mr. Goodwin directed the Phase I survey, research, and coordinated Native American consultation on behalf of the County of Sonoma. He noted historic period resources and prepared the report.

**Riverside County Flood Control and Water Conservation District, Banning MDP Line H Stage 1 Storm Drain Project**  
**Banning, Riverside County, California**

Mr. Goodwin supervised and conducted the Phase IV cultural resources monitoring program, documented and evaluated historic period resources, compiled the administrative record, provided logistical support, prepared the monitoring report, and coordinated closely with the Riverside County Flood Control and Water Conservation District, including curation of the artifact collection at the District office.

**Caltrans, Potrero Road/State Route 60 Project**  
**Beaumont, Riverside County, California**

Mr. Goodwin conducted the Phase I survey, Native American consultation on behalf of Caltrans District 8, and prepared the Historic Property Survey Report (HPSR) and the Archaeological Resources Report (ASR) in accordance with Caltrans Standard Environmental Reference guidelines, Section 106, and CEQA. Caltrans approved the HPSR and ASR.

**Caltrans and City of Colton, Colton Crossing Grade Separation**  
**Colton, San Bernardino County, California**

Mr. Goodwin conducted the Phase I survey and Extended Phase I (XPI) archaeological testing of a segment of BNSF Railway; designed and supervised the ground-penetrating radar program; documented and evaluated historic-period resources; coordinated research; supervised laboratory analysis; conducted Native American consultation on behalf of Caltrans; prepared a Caltrans-format Historic Property Survey Report, Archaeological Resources Report, and XPI Report; and contributed to the Historic Resources Evaluation Report in accordance with Caltrans Standard Environmental Reference guidelines, Section 106, and CEQA. He also arranged for disposition of the artifact collection.

**City of Corona, Corona 720 Project**  
**Corona, Riverside County, California**

Mr. Goodwin conducted the Phase I field survey, documented resources, updated resource documentation, prepared the report, and conducted follow-up for a revised report.

**United States Army Corps of Engineers, Monteolivo Project**  
**Corona, Riverside County, California**

Mr. Goodwin conducted the Phase I survey, research, and Native American consultation on behalf of the United States Army Corps of Engineers. He documented historic period resources and prepared the report.

**Caltrans, I-15/I-215 Interchange**  
**Devore, San Bernardino County, California**

Mr. Goodwin conducted the Phase I survey, assisted with Extended Phase I (XPI) survey/mapping; documented and evaluated historic-period resources; conducted research with the San Bernardino County Archaeologist; conducted additional research on equestrian trails; coordinated and collated multiple record searches; supervised and participated in an archaeological monitoring program; conducted Native American consultation on behalf of Caltrans; prepared Caltrans-format Historic Property Survey Report (HPSR), Archaeological Resources Report (ASR), and monitoring report; and contributed to the Historic Resources Evaluation Report (HRER) in accordance with Caltrans Standard Environmental Reference (SER) guidelines, Section 106, and CEQA. The project received State Historic Preservation Office concurrence on the HPSR/HRER/ASR.

**City of Fontana, Sierra Crest II Project**  
**Fontana, San Bernardino County, California**

Mr. Goodwin supervised and led the archaeological monitoring program, updated resource documentation, evaluated resources, and prepared the monitoring report.

**City of Hemet, Exchange Club Park**  
**Hemet, Riverside County, California**

Mr. Goodwin supervised and led the archaeological monitoring program, coordinated with Native American tribes and the County of Riverside Inspector, and prepared the monitoring report.

**Caltrans, Avenue 44 Bridge over the Coachella Valley Storm Water Channel**  
**Indio, Riverside County, California**

Mr. Goodwin conducted the Phase I survey, research, and Native American consultation on behalf of Caltrans, and prepared a Historic Property Survey Report and Archaeological Resources Report in accordance with Caltrans Standard Environmental Reference guidelines, Section 106, and CEQA.

**City of Indio, Avenue 50 Improvements Project**  
**Indio, Riverside County, California**

Mr. Goodwin conducted the record search and Phase I field survey and co-authored the report.

**City of Indio, Indio Varner Road Mixed-Use Projects**  
**Indio, Riverside County, California**

Mr. Goodwin conducted the record search and Phase I field survey and prepared the report.

**City of Lake Elsinore, The Village Estates**  
**Lake Elsinore, Riverside County, California**

Mr. Goodwin conducted the Phase I field survey, site recordation, Phase II testing, and laboratory analysis of historic period artifacts. He also assisted with architectural evaluation and co-authored the report.

**Caltrans, State Route 710 Extension**  
**Los Angeles County, California**

Mr. Goodwin participated in the historic architectural survey of several alternative routes for the transportation corridor from East Los Angeles to Pasadena. He assisted with preparation of the Historic Resources Evaluation Report.



**City of Morgan Hill, Borello Ranch Project**  
**Morgan Hill, Santa Clara County, California**

Mr. Goodwin participated in Phase III salvage/data recovery of multiple inhumations at a prehistoric Ohlone mortuary complex including documentation of subsurface features, recovery of artifacts, laboratory analysis, monitoring, and logistical support. He contributed the historic context to the report.

**City of Murrieta, CarMax Murrieta Project**  
**Murrieta, Riverside County, California**

Mr. Goodwin conducted the records search and Phase I field survey, updated resource documentation, and prepared the report.

**City of Murrieta, CVS Pharmacy Project**  
**Murrieta, Riverside County, California**

Mr. Goodwin conducted the record search and Phase I field survey, documented and evaluated resources, and prepared the report.

**City of Murrieta, Murrieta Hot Springs**  
**Murrieta, Riverside County, California**

Mr. Goodwin conducted the record search, Phase I survey, site record update, Phase II archaeological testing and laboratory analysis, and prepared the report.

**Caltrans, Mid-Valley Bike Path**  
**Palm Desert, Riverside County, California**

Mr. Goodwin conducted the Phase I survey, research, Native American consultation on behalf of Caltrans, documented historic period resources, and prepared a Historic Property Survey Report and Archaeological Resources Report in accordance with Caltrans Standard Environmental Reference guidelines, Section 106, and CEQA.

**Caltrans, Gene Autry Trail**  
**Palm Springs, Riverside County, California**

Mr. Goodwin conducted the Phase I survey, research, and Native American consultation on behalf of Caltrans, and prepared a Historic Property Survey Report (HPSR) and Archaeological Resources Report (ASR) in accordance with Caltrans Standard Environmental Reference guidelines, Section 106, and CEQA. The project received State Historic Preservation Office concurrence on the HPSR/ASR.

**City of Palm Springs, Boulders Development Project**  
**Palm Springs, Riverside County, California**

Mr. Goodwin conducted the record search and Phase I field survey, updated resource documentation, and prepared the report.

**City of Palm Springs, Palm Springs International Airport**  
**Palm Springs, Riverside County, California**

Mr. Goodwin conducted the Phase I field survey of World War II-era U.S. Army airfield features, documented historic period airfield features, updated resource documentation, assisted with architectural survey, prepared the report, and responded to comments from the Federal Aviation Administration.

**City of Perris, Clearwater Elementary School Project**  
**Perris, Riverside County, California**

Mr. Goodwin conducted the records search and Phase I field survey, and prepared the report.

**City of Perris, Mercado Park Project**  
**Perris, Riverside County, California**

Mr. Goodwin conducted the archaeological monitoring program, coordinated with the City Inspector, and prepared the monitoring report.

**City of Perris, Perris Circle Project**  
**Perris, Riverside County, California**

Mr. Goodwin supervised and led the archaeological monitoring program, coordinated with the City Inspector, and prepared the monitoring report.

**City of Perris, Stratford Ranch Residential**  
**Perris, Riverside County, California**

Mr. Goodwin conducted the Phase I field survey, site record update, Phase II testing, and laboratory analysis, and prepared the report. He arranged for curation of artifact collection.

**City of Rialto, Willow Avenue Warehouse Project**  
**Rialto, San Bernardino County, California**

Mr. Goodwin conducted the records search and Phase I field survey, and prepared the report.

**Caltrans, Mission Boulevard Bridge Replacement**  
**Riverside, Riverside County, California**

Mr. Goodwin supervised the Phase I survey, assisted with mapping, conducted research, coordinated and collated records searches, supervised archaeological survey, conducted Native American consultation on behalf of Caltrans, prepared a Historic Property Survey Report (HPSR), Archaeological Resources Report (ASR), and monitoring report, and assisted with the Historic Resources Evaluation Report (HRER) in accordance with Caltrans Standard Environmental Reference (SER) guidelines, Section 106, and CEQA. The project received State Historic Preservation Office (SHPO) concurrence on the HPSR/HRER/ASR.

**City of Riverside, Cottonwood Warehouse Project**  
**Riverside, Riverside County, California**

Mr. Goodwin conducted the records search and Phase I field survey, and prepared the report.

**Caltrans, Community Environmental Transportation Acceptability Process (CETAP) Project**  
**Riverside County, California**

Mr. Goodwin conducted an expansive historic architectural survey, compiled a built environment inventory, participated in Phase II testing, and edited the Historic Property Survey Report (HPSR).

**Caltrans and County of Riverside, Cajalco Road and Alexander Road Project**  
**Riverside County, California**

Mr. Goodwin supervised and led the archaeological monitoring program, conducted research, coordinated with Native American tribes, Caltrans, and the County Inspector, and prepared the monitoring report.

**County of Riverside, Alessandro Commerce Center**  
**Riverside County, California**

Mr. Goodwin assisted with the Phase I survey, conducted the Phase II testing program, supervised the monitoring program, coordinated with Native American Tribes, updated resource recordation, and prepared the report.

**County of Riverside, Briggs Road Improvements at Warm Springs**  
**Riverside County, California**

Mr. Goodwin supervised and led the archaeological monitoring program, coordinated with Native American Tribes and the County Inspector, and prepared the monitoring report.

**County of Riverside, Gateway Center Specific Plan  
Riverside County, California**

Mr. Goodwin led the Phase I field survey, updated prehistoric resource documentation, conducted Phase II testing, evaluated resources, conducted Native American consultation on behalf of the County, and prepared the report.

**County of Riverside, Santa Ana River Trail Project  
Riverside County, California**

Mr. Goodwin conducted the Phase I survey, research, and Native American consultation on behalf of the County of Riverside. He documented and evaluated historic period resources and prepared the report.

**County of Riverside, South Coast Winery Resort and Spa  
Riverside County, California**

Mr. Goodwin supervised monitoring, acted as lead monitor, and prepared the report. No cultural resources were identified.

**Riverside County Transportation Commission, Mid County Parkway  
Riverside County, California**

Mr. Goodwin participated in the Phase I survey and Phase II testing of prehistoric sites, and assisted with report for the Riverside County Transportation Commission.

**Caltrans, State Street Extension Project  
San Bernardino, San Bernardino County, California**

Mr. Goodwin conducted the Phase I survey, research, and Native American consultation on behalf of Caltrans, and prepared a Historic Property Survey Report (HPSR) and Archaeological Resources Report (ASR) in accordance with Caltrans Standard Environmental Reference (SER) guidelines, Section 106, and CEQA. The project received State Historic Preservation Office (SHPO) concurrence on the HPSR/ASR.

**City of San Diego, BAE Systems Pier 4  
San Diego, San Diego County, California**

Mr. Goodwin conducted research, assisted with the architectural survey, and contributed to the report.

**City of San Diego, Otay II Pipeline Project  
San Diego, San Diego County, California**

Mr. Goodwin conducted the archaeological monitoring program, recovered, documented, and evaluated historic period refuse, coordinated with City Inspector, and prepared monitoring the report.

**City of San Jacinto, Ramona Expressway Widening Project  
San Jacinto, Riverside County, California**

Mr. Goodwin conducted the Phase I survey and research, documented historic period resources, and prepared the report.

**City of Victorville, Space Center Project  
Victorville, San Bernardino County, California**

Mr. Goodwin conducted the records search, coordinated the Phase I field survey, and prepared the report.

**RECREATIONAL**

**CALTRANS, MID-VALLEY BIKE PATH**

**Palm Desert, Riverside County, California**

Mr. Goodwin conducted the Phase I survey, research, Native American consultation on behalf of Caltrans, documented historic period resources, and prepared a Historic Property Survey Report (HPSR) and

Archaeological Resources Report (ASR) in accordance with Caltrans Standard Environmental Reference (SER) guidelines, Section 106, and CEQA.

**City of Hemet, Hemet Valley Bikeway  
Hemet, Riverside County, California**

Mr. Goodwin conducted the Phase I survey, research, Native American consultation on behalf of Caltrans, documented historic period resources, and prepared a Historic Property Survey Report (HPSR) and Archaeological Resources Report (ASR) in accordance with Caltrans Standard Environmental Reference (SER) guidelines, Section 106, and CEQA.

**City of Fontana, Bird Farm Dog Park Project  
Fontana, San Bernardino County, California**

Mr. Goodwin conducted the Phase I survey, research, Native American notification on behalf of the City, and prepared the report.

**City of Moreno Valley, Rancho Verde Park Project  
Moreno Valley, Riverside County, California**

Mr. Goodwin conducted the Phase I survey, research, Native American notification on behalf of the City, and prepared the report.

**County of Riverside, Santa Ana River Trail Project  
Riverside County, California**

Mr. Goodwin conducted the Phase I survey, research, and Native American consultation on behalf of the County of Riverside. He documented and evaluated historic period resources and prepared the report.

**County of Riverside, South Coast Winery Resort and Spa  
Riverside County, California**

Mr. Goodwin supervised monitoring, acted as lead monitor, and prepared the report. No cultural resources were identified.

**City of Perris, Mercado Park Project  
Perris, Riverside County, California**

Mr. Goodwin conducted monitoring and prepared the report. No cultural resources were identified.

**RESIDENTIAL DEVELOPMENT**

**CITY OF PERRIS, STRATFORD RANCH RESIDENTIAL**

**Perris, Riverside County, California**

Mr. Goodwin conducted the Phase I field survey, site record update, Phase II testing, and laboratory analysis, and prepared the report. He arranged for curation of artifact collection.

**County of Riverside, SunCal, McSweeny Farms Residential Development  
Riverside County, California**

Mr. Goodwin participated in Phase II testing of prehistoric sites and coordinated disposition of the artifact collection with designated Most Likely Descendant, Soboba Band of Luiseño Indians.

**Pulte Homes, Tract 18917  
Riverside County, California**

Mr. Goodwin conducted the records search and Phase I field survey, and prepared the report.

**TRANSPORTATION**

**CALTRANS, POTRERO ROAD/STATE ROUTE 60 PROJECT**

**Beaumont, Riverside County, California**

Mr. Goodwin conducted the Phase I survey, Native American consultation on behalf of Caltrans, and prepared the Historic Property Survey Report (HPSR) and Archaeological Resources Report (ASR) in accordance with Caltrans Standard Environmental Reference (SER) guidelines, Section 106, and CEQA for District 8. The HPSR and ASR were approved by Caltrans.

**Caltrans and City of Colton, Colton Crossing Grade Separation  
Colton, San Bernardino County, California**

Mr. Goodwin conducted the Phase I survey and Extended Phase I (XPI) archaeological testing of a segment of BNSF Railroad, designed and supervised the ground-penetrating radar (GPR) program, documented and evaluated historic-period resources, coordinated research, supervised laboratory analysis, conducted Native American consultation on behalf of Caltrans, prepared Caltrans-format Historic Property Survey Report (HPSR), Archaeological Resources Report (ASR), and XPI Report, and contributed to the Historic Resources Evaluation Report (HRER) in accordance with Caltrans Standard Environmental Reference (SER) guidelines, Section 106, and CEQA. He also arranged for disposition of the artifact collection.

**Caltrans, I-15/I-215 Interchange  
Devore, San Bernardino County, California**

Mr. Goodwin conducted the Phase I survey, assisted with XPI survey/mapping, documented and evaluated historic-period resources, conducted research with the San Bernardino County Archaeologist, conducted additional research on equestrian trails, coordinated and collated multiple records searches, supervised and participated in an archaeological monitoring program, conducted Native American consultation on behalf of Caltrans, prepared Caltrans-format Historic Property Survey Report (HPSR), Archaeological Resources Report (ASR), and monitoring report, and contributed to the Historic Resources Evaluation Report (HRER) in accordance with Caltrans Standard Environmental Reference (SER) guidelines, Section 106, and CEQA. The project received State Historic Preservation Office (SHPO) concurrence on the HPSR/HRER/ASR.

**Caltrans, Avenue 44 Bridge over the Coachella Valley Storm Water Channel  
Indio, Riverside County, California**

Mr. Goodwin conducted the Phase I survey, research, and Native American consultation on behalf of Caltrans, and prepared a Historic Property Survey Report (HPSR) and Archaeological Resources Report (ASR) in accordance with Caltrans Standard Environmental Reference (SER) guidelines, Section 106, and CEQA.

**City of Indio, Avenue 50 Improvements Project  
Indio, Riverside County, California**

Mr. Goodwin conducted the records search and Phase I field survey, and co-authored the report.

**Caltrans, State Route 710 Extension  
Los Angeles County, California**

Mr. Goodwin participated in the historic architectural survey of several alternative routes for the transportation corridor from East Los Angeles to Pasadena. He assisted with preparation of the Historic Resources Evaluation Report (HRER).

**Caltrans, Gene Autry Trail  
Palm Springs, Riverside County, California**

Mr. Goodwin conducted the Phase I survey, research, and Native American consultation on behalf of Caltrans, and prepared a Historic Property Survey Report (HPSR) and Archaeological Resources Report (ASR) in accordance with Caltrans Standard Environmental Reference (SER) guidelines, Section 106, and CEQA. The project received State Historic Preservation Office (SHPO) concurrence on the HPSR/ASR.

**Caltrans, Mission Boulevard Bridge Replacement  
Riverside, Riverside County, California**

Mr. Goodwin supervised the Phase I survey, assisted with mapping, conducted research, coordinated and collated records searches, supervised archaeological survey, conducted Native American consultation on behalf of Caltrans, prepared a Historic Property Survey Report (HPSR), Archaeological Resources Report (ASR), and monitoring report, and assisted with the Historic Resources Evaluation Report (HRER) in accordance with Caltrans Standard Environmental Reference (SER) guidelines, Section 106, and CEQA. The project received State Historic Preservation Office (SHPO) concurrence on the HPSR/HRER/ASR.

**Caltrans, Community Environmental Transportation Acceptability Process (CETAP) Project  
Riverside County, California**

Mr. Goodwin conducted an expansive historic architectural survey, compiled a built environment inventory, participated in Phase II testing, and edited the Historic Property Survey Report (HPSR).

**Caltrans and County of Riverside, Cajalco Road and Alexander Road Project  
Riverside County, California**

Mr. Goodwin supervised and led the archaeological monitoring program, conducted research, coordinated with Native American Tribes, Caltrans, and the County Inspector, and prepared the monitoring report.

**County of Riverside, Briggs Road Improvements at Warm Springs  
Riverside County, California**

Mr. Goodwin supervised and led the archaeological monitoring program, coordinated with Native American Tribes and the County Inspector, and prepared the monitoring report.

**Riverside County Transportation Commission, Mid County Parkway  
Riverside County, California**

Mr. Goodwin participated in the Phase I survey and Phase II testing of prehistoric sites, and assisted with report for the Riverside County Transportation Commission.

**Caltrans, State Route 210 Project  
San Bernardino, San Bernardino County, California**

Mr. Goodwin conducted the archaeological monitoring program, recovered prehistoric human remains, coordinated with the County Coroner and Native American Tribes, and prepared a monitoring report in accordance with Caltrans Standard Environmental Reference (SER) guidelines, Section 106, and CEQA for District 8. The report was approved by Caltrans.

**Caltrans, State Street Extension Project  
San Bernardino, San Bernardino County, California**

Mr. Goodwin conducted the Phase I survey, research, and Native American consultation on behalf of Caltrans, and prepared a Historic Property Survey Report (HPSR) and Archaeological Resources Report (ASR) in accordance with Caltrans Standard Environmental Reference (SER) guidelines, Section 106, and CEQA. The project received State Historic Preservation Office (SHPO) concurrence on the HPSR/ASR.

**City of San Jacinto, Ramona Expressway Widening Project  
San Jacinto, Riverside County, California**

Mr. Goodwin conducted the Phase I survey and research, documented historic period resources, and prepared the report.

**UTILITIES**

**SOUTHERN CALIFORNIA EDISON, SUPERSTITION SOLAR PROJECT**

**El Centro, California**

Mr. Goodwin participated in the Phase I survey, documented cultural resources, and contributed to the report.

**Southern California Edison, On-Call Biological, Cultural, and Water Quality Support  
Inyo, Kern, Los Angeles, Mono, Orange, Riverside, San Bernardino, San Diego, Santa Barbara, Tulare, and  
Ventura Counties, California**

Mr. Goodwin conducted multiple surveys, documented historic-period resources and prepared letter reports and memos.

**Southern California Edison, West Of Devers Project  
Riverside County, California**

Mr. Goodwin conducted the Phase I survey and research, documented historic period resources, and contributed to the report.

**City of San Diego, Otay II Pipeline Project  
San Diego, San Diego County, California**

Mr. Goodwin conducted the archaeological monitoring program, recovered, documented, and evaluated historic period refuse, coordinated with City Inspector, and prepared monitoring the report.

**Southern California Edison, El Casco Substation Project  
San Timoteo Canyon, Riverside County, California**

Mr. Goodwin conducted the cultural resources monitoring program, documented historic period resources, managed the laboratory and provided logistical support to the paleontological monitoring/fossil specimen recovery program.

**SELECTED REPORTS**

Archaeological Monitoring Program, Briggs Road Improvements at Warm Springs Creek, Riverside County Transportation Department, Riverside County, California 2016.

Archaeological Monitoring Program, Perris Circle Industrial Park Project, Riverside County, California 2015.

Cultural Resources Assessment and Archaeological Testing, Gateway Center Specific Plan, Riverside County, California 2015.

Cultural Resources Assessment, Brent Engineering Riverside Project, Riverside County, California 2017.

Cultural Resources Assessment, CVS Pharmacy, City of Murrieta, Riverside County, California 2016.

Cultural Resources Assessment, Rancho Diamonte Project, City of Hemet, Riverside County, California 2016.

Historic Property Survey Report, Colton Crossing Grade Separation Project, City of Colton, San Bernardino County, California 2011.

Phase II Archaeological Testing, Perris Union High School No. 4, Riverside County, California, 2016.

**PRESENTATIONS**

“Evidence for Luiseño and Diegueño Cultural Continuity in the Late California; Mission Period: Ceremonial Art.” Presented at the 1992 California Mission Studies Association annual conference.

“Allensworth: Prelude to the Dream.” Presented at the Society for Historical Archaeology Annual Meeting in 2007.

“The Archaeology of Patton’s Desert Training Center in the Chuckwalla Valley at Desert Center, California.” Poster presented at the Society for California Archaeology 2010 Annual Meeting.

“The Perris Crescent.” Presented at the Society for California Archaeology 2016 Annual Meeting.



**REFERENCE**

Gary Jones  
District 8 Native American Coordinator  
Caltrans  
(909) 383-7505



**EXPERTISE**

- Historical Archaeology
- Historical Research
- Phase I Surveys
- Phase II Test Excavation
- Paleontological Resource Monitoring
- Cultural Resource Monitoring
- Fossil Collection, Salvage, Identification, and Curation
- Cultural Resource Collection, Salvage, Identification, and Curation

**EDUCATION**

Claremont Graduate University, Fullerton, PhD., History, In Progress.

Claremont Graduate University, Fullerton, MA, History and Archival Studies, In Progress.

University of California Los Angeles Extension, Environmental Studies Certificate, 2019.

Durham University, UK, MSc, Archaeological Science, 2017.

Azusa Pacific University, BA., History, Minor Art 2010.

**PROFESSIONAL EXPERIENCE**

Archaeologist, LSA, Irvine, California, July 2024–Present.

Lab Manager and Archaeology/Paleontology Supervisor II, Cogstone Resource Management, Orange, California, November 2017–June 2024.

Archaeology/Paleontology  
Technician, Paleosolutions Inc,  
Monrovia, California,  
December 2016– November  
2017.

Collection Assistant, La Brea  
Tar Pits and Museum, January  
2017–June 2017.

**VOLUNTEER/INTERN  
EXPERIENCE**

Foothill College, Ecuador  
Program, Archaeology, 2023.

Arizona Western College, El  
Golfo Badlands, Paleontology,  
2019.

La Brea Tar Pits and Museum,  
Collection Management,  
Paleontology, 2016-2017.

Natural History Museum, Los  
Angeles, Haaga Expedition,  
Paleontology, 2017.

Natural History Museum, Los  
Angeles, Augustyn Expedition,  
Paleontology, 2017.

Durham University, United  
Kingdom, Binchester Project,  
Archaeology, 2015-2016.

Sheffield University,  
Zooarchaeology Shortcourse,  
2016.

Durham University,  
Badgendon Project,  
Archaeology, 2015.

Fowler Museum at UCLA,  
Archaeological and  
Ethnographic Objects  
Conservation, 2014-2015.

Natural History Museum, Los  
Angeles, Vertebrate  
Paleontology and Dinosaur  
Institute, 2013-2015.

**PROFESSIONAL  
AFFILIATIONS**

Register of Professional  
Archaeologists (RPA)

**AWARDS/HONORS**

Departmental Scholarships,  
Claremont Graduate  
University, 2019–Present

Blaisdell Fellowship,  
Claremont Graduate  
University, 2019–Present

## **PROFESSIONAL RESPONSIBILITIES**

Ms. Sharp is an archaeologist at LSA. She is a Registered Professional Archaeologist (RPA) and cross-trained paleontologist with more than 10 years of experience in cultural and paleontological resources monitoring, survey, excavation, preparation of fossils and artifacts for curation, and screening and sorting sediments for artifacts and fossils. Ms. Sharp has managed archaeology and paleontology labs in addition to serving as a supervisor for projects and personnel. She has worked on a variety of projects in the water, transportation, energy, development, public, and private sectors. For these projects, Ms. Sharp has served as a primary point of contact for the client, created and managed schedules, conducted crew sensitivity trainings, and authored relevant reports. Her field and laboratory experience include a range of projects throughout California, Utah, New Mexico, Mexico, Ecuador, and England.

## **PROJECT EXPERIENCE**

### **Purple Line Extension (Westside Subway) Sections 1 and 2 Construction Management, Los Angeles County Metropolitan Transportation Authority, Los Angeles County, California.**

Ms. Sharp supervised paleontological monitoring, fossil recovery, and fossil preparation in the lab. She contributed to monthly reporting during construction of seven stations from the existing Purple Line at Wilshire/Western Avenue along Wilshire Boulevard to the Veterans Administration Hospital in Westwood for 8.6 miles and managed paleontological services for Sections 1 and 2 of the subway project including budgets, Workers Environmental Awareness Program (WEAP) training, monitoring, fossil recovery, fossil preparation, identification, cataloguing, curation with the Natural History Museum of Los Angeles County, and reporting.

### **The Cooper Laboratory Santa Ana, Orange County, California**

Ms. Sharp provided archaeological and paleontological supervision including preparation and curation services for Orange County's John D. Cooper Archaeological and Paleontological Center. Archaeological and paleontological tasks included preparation and stabilization of vertebrate fossils from field jackets; screen washing matrix from jackets; molding and casting selected fossils for the creation of exhibits; building metal armatures to safely hold select fossils for exhibits; repairing and stabilizing previously prepared specimens that have degraded over time; processing bulk soil samples for the recovery of plants, charcoal, shells, and other finds; processing unsorted midden; and faunal identification. Fossil Preparation and archaeological collections supervision 2021-2024.

### **Los Angeles World Airports Ongoing Technical Support for Environmental, Mitigation Reporting, and Sustainability Issues Associated with Los Angeles World Airports Construction Projects Los Angeles International Airport, Los Angeles County, California**

Ms. Sharp served as paleontology supervisor and helped prepare and present a paleontological Workers Environmental Awareness Program training and conducted and supervised paleontological resources monitoring during construction activities for six task orders. Upon completion of monitoring for each project, Paleontological Resources Monitoring Compliance Reports were prepared. The City of Los Angeles functioned as lead agency for the project.

### **Los Angeles World Airports Los Angeles International Airport North Airfield Taxiway Los Angeles, Los Angeles County, California**

Ms. Sharp provided cultural and paleontological resources monitoring during construction. Ground-disturbing activities consisted of the construction of four new high-speed exit taxiways, the reconstruction of approximately 5,400 linear feet of the keel section along an existing runway, and the reconstruction of existing taxiway pavement. Several 18- to 48-inch-in-diameter reinforced concrete pipe storm drains in the infield areas surrounding the proposed taxiways were also constructed, including drain improvements and construct

aircraft related inlet structures and manholes to facilitate the proposed storm drains. Drainage swales in the infield areas surrounding the proposed taxiways were also completed. The project was completed in compliance with Los Angeles World Airports' (LAWA) Archaeological Treatment Plan and Paleontological Management Treatment Plan as well as all Mitigation Measures for Los Angeles International Airport. LAWA is the lead agency under the CEQA.

**Southern California Edison Environmental Clearance On-Call Program  
Statewide, California**

Ms. Sharp provided on-call cultural resource monitoring services for various Southern California Edison projects throughout California for more than 100 task orders.

**Pacific Gas and Electric Environmental Clearance On-Call Program  
Statewide, California**

Ms. Sharp provided on-call cultural resource monitoring services for various Pacific Gas & Electric Co. projects throughout California.

**Los Angeles County Museum of Art Building for the Permanent Collection Project  
Los Angeles, Los Angeles County, California**

Ms. Sharp conducted paleontological resources monitoring, supervision, and fossil recovery during construction of a 347,500-gross-square-foot museum building, which will replace four buildings (Ahmanson Building, Hammer Building, the Art of Americas Building, and the Bing Center) within Los Angeles County Museum of Art East. The new building and the outdoor experience provide enhanced outdoor landscaped plazas, public programming and educational spaces, sculpture gardens, and native and drought-tolerant plants, integrated with the museum building and within Hancock Park.

**Palo Verde  
La Quinta, Riverside County, California**

Ms. Sharp provided archaeological and paleontological resources monitoring during excavations for the construction of single-family residences.

**Preserve School  
City of Chino, San Bernardino County, California**

Ms. Sharp provided archaeological monitoring for the Chino Valley Unified School District's development of a 12-acre lot for the operation of a K-8 school campus with a total footprint of approximately 82,000 square feet to house up to 1,200 students on a four-track, year-round schedule.

**Bureau of Land Management El Centro Recreation Project  
Imperial, Imperial County, California**

The Bureau of Land Management's (BLM) El Centro Field Office requested Class III Cultural Resources Inventory Surveys and archaeological site assessments to prevent potential adverse effects to cultural resources within BLM managed lands identified for temporary or permanent disturbance due to implementation of recreation program projects on 47 acres in the Superstition and Plaster City Open Areas. Ms. Sharp completed this work to satisfy BLM's responsibilities for compliance under Section 106 of the NHPA. Ms. Sharp provided an intensive pedestrian survey. Although the record search did not identify any previously recorded cultural resources in the proposed APE, 41 previously recorded cultural resources were identified within a 1-mile radius, some of which may have subsurface potential. Cultural resources monitoring was recommended due to the sensitivity for buried cultural resources. The BLM is the lead federal agency under NEPA.

**West Lincoln Ave. Mixed Use**  
**Anaheim, Orange County, California**

Ms. Sharp provided archaeological and paleontological monitoring for the construction of a new four-story mixed-use development project consisting of 315 residential apartment units with 653 parking spaces and 3,413 square feet of retail space on 5.25 acres within Assessor Parcel Numbers 250-091-09, -10, and -11 at 1600 West Lincoln Avenue in Anaheim, Orange County.

**Mirador Project**  
**Altadena, Los Angeles County, California**

This project included the construction of residential apartments featuring 71 affordable and supportive housing units geared towards low-income senior citizens. Ms. Sharp provided archaeological and paleontological monitoring for this project.

**Cold Canyon Landfill Expansion Module 11B**  
**Arroyo Grande, San Luis Obispo County, California**

Ms. Sharp conducted archaeological and paleontological resources monitoring for the expansion of an existing landfill. In addition, Worker Environmental Awareness Program training was provided for all construction personnel. Upon completion of monitoring, preparation of a Paleontological Resources Monitoring Compliance Report was completed at the conclusion of ground disturbance.

**Duarte Station Specific Plan**  
**Duarte, Los Angeles County, California**

Ms. Sharp provided archaeological monitoring for the development of a new mixed-use space including a two-building residential development with 619 dwelling units, parking structures, and 157,195 feet of open space in addition to a ground floor commercial use and up to 80 units of rent-restricted affordable housing.

**North Outfall Sewer Rehabilitation Project**  
**Los Angeles, Los Angeles County, California**

Ms. Sharp provided archaeological monitoring for the rehabilitation of the North Outfall Sewer in Los Angeles. The North Outfall Sewer was constructed in the 1920s and needed rehabilitation due to its poor condition. To rehabilitate the sewer, eight access pits were excavated to slip-line a new pipe in the existing sewer. The excavation depths varied from 25 feet to 42 feet.

**Rancho Los Cerritos Stormwater Retention Project**  
**City of Long Beach, Los Angeles County, California**

Ms. Sharp provided cultural resources monitoring during ground-disturbing construction activities for the Rancho Los Cerritos Stormwater Retention Project. The project consists of constructing a stormwater retention system to allow the site to capture and reuse 95 percent of rainwater. Construction consists of permeable pavers, pervious concrete, an underground cistern, bioswales, detention pond, and an eco-parking lot. Rancho Los Cerritos is the lead agency under the CEQA and Section 106 of the NHPA. Rancho Los Cerritos was listed in the National Register of Historic Places (NRHP Number 978) on April 15, 1970, and this project must conform to (1) the United States Secretary of the Interior's Standards for Rehabilitation and Guidelines for Rehabilitating Historic Buildings, and (2) the Standards of Rehabilitation measures adopted by the Rancho Los Cerritos Master Plan (City of Long Beach 2002), and the other mitigation measures for the project. The project's Area of Potential Effects (APE) measures 4.77 acres and was established as the area where the project could directly or indirectly affect historic properties.

**William R. Mason Regional Park Entry Driveway and Road Improvements Project**  
**Irvine, Orange County, California**

Ms. Sharp provided archaeological monitoring for OC Parks, in collaboration with OC Public Works, at William Mason Park. This project enhances the park visitor experience by improving the entryway, providing an accessible path of travel into the park and fixing drainage issues. Work consisted of removing existing deteriorated asphalt pavement and replacing it with a combination of regular and permeable asphalt to alleviate drainage issues while improving the quality of stormwater runoff; removing and replacing the damaged curb and gutter and adding of Americans with Disabilities Act-compliant curb ramps, removing and replacing landscape and irrigation within the roundabout and medians to include drought-tolerant and low-water-consumption plants, adding lighting to the roundabout, adding a raised crosswalk and wayfinding signs, and striping pavement to enhance the bike trail crossing and assist vehicular traffic more efficiently and safely navigate the entrance.

**Morro Bay Water Facility Project Phases I and II**  
**Morro Bay, San Luis Obispo County, California**

Ms. Sharp provided archaeological and paleontological resources monitoring during ground-disturbing activities during the City of Morro Bay's Water Reclamation Facility Lift Stations and Offsite Pipelines Construction Project. Excavation in a portion of the project required a permit from the United States Fish and Wildlife Service. The project was being completed in compliance with mitigation measures contained within the EIR for the project. A Cultural and Paleontological Resources Monitoring Compliance Report was completed upon the conclusion of ground disturbance for the project. The City of Morro Bay is the lead agency under the CEQA.

**Rose Hill Courts Redevelopment Project**  
**Los Angeles, Los Angeles County, California**

Ms. Sharp provided archaeological supervision for the project. Archaeological and paleontological resources monitoring was conducted during the proposed demolition of 15 buildings with 100 existing public housing units and the construction of 185 new multifamily units contained within 9 buildings, a 6,366 square-foot office/community building, and 174 parking spaces. Ms. Sharp prepared a Paleontological Resource Monitoring Compliance Report following the completion of ground disturbance for the project. Archaeology Supervisor.

**Hilltop and Euclid Mixed-Use Project**  
**San Diego, San Diego County, California**

Ms. Sharp provided paleontological resources monitoring during excavations for the proposed construction of 20 single-family residences, 27 two-story townhome residences, 113 affordable apartment units, a parking garage, and approximately 8,300 square feet of commercial space. A Paleontological Resources Monitoring Compliance Report was completed at the conclusion of ground disturbance for the project.

**Fort Bidwell Northern Paiute Indian Reservation**  
**Fort Bidwell Reservation, Modoc County, California**

Ms. Sharp conducted archaeological monitoring of a waterline construction project to ensure compliance of all cultural laws and regulations and coordinated with a tribal liaison/monitor to protect cultural values and collect artifacts for curation in the tribal museum at Fort Bidwell.

**Ganahl Lumber Project**  
**City of San Juan Capistrano, Orange County, CA**

Ms. Sharp provided archaeological and paleontological resources monitoring during the geotechnical boring of 20 auger holes for the Ganahl Lumber Project in San Juan Capistrano, Orange County, California. A total of 20 geotechnical boring holes were drilled using an auger to depths that varied from 5 to 60 feet deep. This project was conducted in compliance with the City of San Juan Capistrano Council Policy 601.



**Deep Soil Mixing Pilot Project**  
**Pacific Palisades, Los Angeles County, California**

Ms. Sharp provided archaeological and paleontological monitoring as part of an on-call contract with the Los Angeles Bureau of Engineering, resources monitoring, and managed Native American monitoring during ground-disturbing activities. The City of Los Angeles was the lead agency under the CEQA. Monitoring for the project was conducted in compliance with the Contingency Plan conditions from the Coastal Development Permit from the California Coastal Commission.

**Spalding—A Cell**  
**City of Beverly Hills, Los Angeles County, California**

Ms. Sharp conducted a record search review and site visit for the candidate site in anticipation of changes to equipment in use at the existing facility. This study was conducted in accordance with Section 106 of the National Historic Preservation Act of 1966. The Spalding – A cell facility is at 9735 Wilshire Boulevard, Beverly Hills, California 90212 on top of the Beverly-Linden Medical Office Building.

**State Route 132 West Freeway/Expressway- Phase 1, Caltrans District 10**  
**Modesto, Stanislaus County, California**

Ms. Sharp provided paleontology monitoring for the construction of approximately 4 miles of a four-lane freeway/expressway connecting SR-132 with Modesto on a new alignment south of Kansas Avenue from Dakota Avenue to east of Needham Street.

**Windsor Pointe Project**  
**Carlsbad, San Diego County, California**

Ms. Sharp conducted cultural resources monitoring for the Windsor Pointe Project. The project involves the construction of 50 affordable multifamily housing units on two sites, which are aimed at providing housing for homeless and lower-income veterans and their families as well as for homeless people with severe mental illnesses. In total, the project would include two three-story buildings with a unit mix of 24 studio units, 17 one-bedroom units, seven two-bedroom units, and two three-bedroom units. To support the project, Ms. Sharp provided archaeological monitoring, meeting the qualifications required by the Secretary of the Interior's Standards and Guidelines for Archaeology and Historic Preservation.

**Indian Health Clinic Project**  
**Torres Martinez Desert Cahuilla Indian Reservation, Riverside and San Bernadino Counties, California**

Ms. Sharp conducted cultural resources monitoring during ground-disturbing activities for the construction of a new Indian Health Clinic within the Torres Martinez Desert Cahuilla Reservation. Cultural resources monitoring followed the Final Cultural Resources Monitoring Plan and Native American Graves Protection and Repatriation Act Plan of Action for the project in compliance with Section 106 of the NHPA.

**Jack Ranch Tract**  
**San Luis Obispo County, California**

Ms. Sharp provided archaeological and paleontological monitoring during construction for residential development of a 299-acre parcel just south of San Luis Obispo. The County of San Luis Obispo is the lead agency for this project under CEQA.

**Ladera Park Regional Stormwater Improvements Project**  
**Los Angeles, Los Angeles County, California**

Ms. Sharp conducted cultural and paleontological resources monitoring during improvements to Ladera Park that will allow the capture and storage of stormwater runoff. Monitoring complied with program mitigation

measures and as defined by the County of Los Angeles, Department of Public Works (LACDPW), Project Management Division II. LACDPW was the project proponent and functioned as the lead agency under CEQA.

**LAX United Airlines East Aircraft Maintenance and Ground Support Equipment Project  
City of Los Angeles, Los Angeles County, California**

Ms. Sharp provided archaeological and paleontological monitoring for the project, which consolidates and modernizes existing United Airlines aircraft maintenance and Ground Support equipment (GSE) facilities at LAX, allowing for more efficient and effective maintenance of existing aircraft and GSE. The project redeveloped a 37-acre site in the eastern portion of the airport with a new 411,000 sf. facility. The consolidation alters on and off-airport vehicular movements and movements on the airfield.

**Los Angeles World Airports Terminal 4 and Terminal 5 Modernization Project  
Los Angeles, Los Angeles County, California**

Ms. Sharp provided archaeological and paleontological monitoring for a part of the project, which modernizes existing Terminal 4 and Terminal 5 including American Airlines, JetBlue and Spirit Airlines through a \$1.6 billion modernization slated to end in 2027 that will create a centralized location for ticketing, screening and baggage claim with enhanced amenities for guests and will provide direct connection to the Automated People Mover train system. Archaeology and Paleontology Monitoring 2020.

**San Juan Capistrano Memory Care Development Project  
San Juan Capistrano, Orange County, California**

Ms. Sharp conducted cultural and paleontological resources monitoring and coordinated Native American monitoring during construction of an adult memory care facility with associated parking and exterior lighting.

**Florence Mills Apartments Project  
Los Angeles, Los Angeles County, California**

Ms. Sharp provided prehistoric and historic archaeological monitoring for the development of affordable and subsidized multifamily apartment buildings along the Historic Central Avenue Corridor in Southeast Los Angeles.

**Gates Canyon Park  
Calabasas, Los Angeles County, California**

Ms. Sharp conducted cultural and paleontological resources monitoring during improvements to Gates Canyon Park to allow the capture and storage of stormwater runoff from an adjacent 105-acre residential area. Monitoring complied with program mitigation measures and as defined by the County of Los Angeles,

Department of Public Works (LACDPW), Project Management Division II. LACDPW was the project proponent and functioned as the lead agency under CEQA.

**Los Angeles World Airports Police Facility Project**  
**Los Angeles, Los Angeles County, California**

Ms. Sharp conducted cultural and paleontological resources monitoring during construction of two L-shaped structures including a 64,000 sf, two-story police headquarters and a 108,000 sf, four-story parking garage. A 60,000 sf quad area will be located between the two structures. Both structures included partially subterranean levels. Monitoring was conducted during the grading phase of the project, prior to construction of the headquarters and parking garage structures. All work was completed in compliance with LAX Northside Plan Update Project Design Features, Commitments, and the Mitigation Monitoring and Reporting Program.

**Dodd's Circle Survey**  
**East Los Angeles, Los Angeles County, California**

Ms. Sharp provided an archaeological survey for Sprint's proposed cell tower installation. The project proposed to install one new wooden pole and to install six new antennas, nine new Remote Radio Heads, and one new Microwave dish onto the proposed pole.

**Corona Affordable Housing Project**  
**City of Corona, Riverside County, California**

Ms. Sharp conducted cultural and paleontological resources monitoring during grading for the development of affordable multifamily apartment buildings.

**Archaeological and Paleontological Resources Training for the Los Angeles World Airports Utilities and LAMP Enabling Projects**  
**City of Los Angeles, Los Angeles County, California**

Ms. Sharp provided in-person archaeological and paleontological resources WEAP training to all construction personnel for the R23 A Street Project as part of the LAWA Utilities and Land Access Modernization Program Enabling Projects.

**SR-46 Union Road Realignment, Caltrans District 5**  
**Paso Robles, San Luis Obispo County, California**

Ms. Sharp conducted an intensive pedestrian survey of accessible areas containing late Pleistocene alluvium and the Paso Robles Formation.

**Hope Steet Bridge Housing Project**  
**Los Angeles, Los Angeles County, California**

Ms. Sharp conducted an intensive pedestrian survey for this project. The purpose of the study was to determine the potential effects to paleontological resources for the proposed temporary emergency homeless shelter. This project was a task order from an on-call contract with the Los Angeles Bureau of Engineering.

**Woolsey Fire Emergency Monitoring**  
**Malibu, Los Angeles County, California**

As cultural resources monitor, Ms. Sharp conducted an emergency environmental survey and assessments of fire damaged pole locations for archaeological and historical resources prior replacement and also monitored ground-disturbance activities during the pole replacement.

**Roosevelt Park Regional Stormwater Capture Project**  
**Los Angeles, Los Angeles Couty, California**

Ms. Sharp provided paleontological and archaeological monitoring for a project involving the construction of three diversion structures and pipelines, during all ground-disturbing activities in native sediments.

**SELECTED PUBLICATIONS**

- Hrafnhildur Helga Halldórsdóttir, Bryony Rogers, Frank Dierenno, Gundula Müldner, Darren R. Gröcke, Ellen Barnicle, Blessing Chidimuro, Malcolm Evans, Ruth Morley, Monica Neff, Cassidy Sharp, Ashleigh Simpson, Andy Boucher, Janet Montgomery.
- 2019 Continuity and individuality in Medieval Hereford, England: A stable isotope approach to bulk bone and incremental dentine. *Journal of Archaeological Science: Reports*, 23(800-809).  
<https://doi.org/10.1016/j.jasrep.2018.12.006>.

Sharp, Cassidy

- 2016 The Palaeopathology of Zed (*M. columbi*): Analysing Health to Discern Hunting in Pleistocene Mammoths. M.Sc. Dissertation. Durham University. 85 pp.

## **APPENDIX B**

# **RECORD SEARCH BIBLIOGRAPHY**

## Report List

LSA2411

Report No.	Other IDs	Year	Author(s)	Title	Affiliation	Resources
SB-00108	NADB-R - 1060108; Voided - 71-9.1	1971	King, Thomas F.	M-YUC: An Archaeological Survey of the Proposed Right-Of-Way Of the Morongo-Yucca-Upper Coachella Valley Pipeline	University of California at Riverside, Department of Anthropology	36-000349, 36-000555, 36-000556, 36-000557, 36-000558, 36-000559, 36-000560, 36-000561
SB-00152	NADB-R - 1060152; Voided - 73-4.3	1973	DECKER, DEAN A.	THE ARCHAEOLOGICAL IMPACT OF A RESIDENTIAL DEVELOPMENT NORTH OF YUCCA VALLEY, CALIFORNIA		36-002379, 36-002380
SB-00899	NADB-R - 1060899; Voided - 80-1.3	1980	SAN BERNARDINO COUNTY MUSEUM ASSOCIATION	CULTURAL RESOURCES ASSESSMENT OF PROPERTY LOCATED IN SEC. 13, T1N R5E, YUCCA VALLEY	SAN BERNARDINO COUNTY MUSEUM ASSOCIATION	
SB-01273	NADB-R - 1061273; Voided - 82-5.5	1982	SUTTON, MARK	CULTURAL ASSESSMENT FOR HIGH DESERT WATER DISTRICT WATER TANK, YUCCA VALLEY		
SB-02158	NADB-R - 1062158; Voided - 74-6.1	1974	MORTLAND, CAROL A.	ARCHAEOLOGICAL IMPACT EVALUATION: SOUTHERN CALIFORNIA EDISON PROPOSED GENERATING STATION IN UPPER JOHNSON VALLEY AND ASSOCIATED TRANSMISSION, GAS AND FUEL ROUTES	ARCHAEOLOGICAL RESEARCH UNIT, UCR	36-000181, 36-001922, 36-002208, 36-002592, 36-003433, 36-003434, 36-003435, 36-003697, 36-003698, 36-003780, 36-003781, 36-003782, 36-003783, 36-003784, 36-003785, 36-003843, 36-003844, 36-003845, 36-003849, 36-003850, 36-003851, 36-006190
SB-02518	NADB-R - 1062518; Voided - 91-0.9	1991	SUTTON, MARK Q.	A FORWARD TO THE BAKER SITE REPORT		36-000541
SB-03908	NADB-R - 1063908	2002	BONNER, WAYNE	PHASE I ARCHAEOLOGICAL FIELD SURVEY FOR CINGULAR WIRELESS SITE CM 457-02 LOCATED AT 4451 OLD WOMAN SPRINGS ROAD, YUCCA VALLEY, SAN BERNARDINO COUNTY, CA. 11PP	BONNER ASSOCIATES	
SB-04654	NADB-R - 1064654	2005	TEJADA, BARBARA	ARCHAEOLOGICAL SURVEY REPORT FOR THE STATE ROUT 247 AT BUENA VISTA DRIVE, YUCCA VALLEY, SAN BERNARDINO COUNTY, CALIFORNIA		
SB-06284	NADB-R - 1066284	2009	ENCARNACION, DEIRDRE, BALLESTER, DANIEL, and LAURA H. SHAKER	HISTORICAL/ARCHAEOLOGICAL RESOURCES SURVEY REPORT: YUCCA VALLEY WATER SYSTEM INFRASTRUCTURE IMPROVEMENTS, TOWN OF YUCCA VALLEY, SAN BERNARDINO COUNTY, CALIFORNIA		
SB-06927	NADB-R - 1066927	2011	Encarnacion, Deirdre, Daniel Ballester, and Laura H. Shaker	Identification and Evaluation of Historic Properties: Yucca Valley Wastewater System Infrastructure Improvements, Town of Yucca Valley, San Bernardino County, California.	CRM Tech	36-010525

## Report List

LSA2411

Report No.	Other IDs	Year	Author(s)	Title	Affiliation	Resources
SB-07278	NADB-R - 1067278; Other - SCE	2009	Jones, Gary A.	Archaeological Survey Report for Southern California Edison's Deteriorated Pole Project on the Campanula 25 kV, Chollita 12 kV, Meloday 20 kV, Mockingbird 12 kV, and Pioneertown 12 kV Transmission Lines in San Bernardino County, California.	AECOM	
SB-07722	NADB-R - 1067722	2012	Tang, Bai "Tom"	Addendum to Historical/Archaeological Resources Survey Report: Yucca Valley Wastewater System Infrastructure Improvement Project, Town of Yucca Valley, San Bernardino County, California.		
SB-07723	NADB-R - 1067723	2013	Tang, Bai "Tom", Daniel Ballester, and Laura Shaker	Identification and Evaluation of Historic Properties: Yucca Valley Wastewater System Infrastructure Improvements, Town of Yucca Valley, San Bernardino County, California.		
SB-07725	NADB-R - 1067725	2012	Horne, Melinda	Paleontological and Cultural Resources Assessment for the Town of Yucca Valley General Plan Update, San Bernardino County, California.		
SB-07792	NADB-R - 1067792	2014	Bonner, Wayne H., Sarah A. Williams, and Kathleen A. Crawford	Cultural Resource Record Search and Site Visit Results for T-Mobile West, LLC Candidate IE04457A (CM457 4451 Old Woman Spring) 4451 Old Woman Springs Road, Yucca Valley, San Bernardino County, California.	EAS	
SB-07793	NADB-R - 1067793	2014	Crawford, Kathleen A.	Direct APE Historic Architectural Assessment for T-Mobile West, LLC Candidate IE04454A (CM457 Old Woman Spring), 4451 Old Woman Springs Road, Yucca Valley, San Bernardino County, California.	EAS	