

CONSTRUCTION NOTE:

- ① NEW 6 INCH CONC CURB
- ② AC PAVING 4" OVER 8" CAB
- ③ NEW 3 FT CONC. RIBBON GUTTER
- ④ PROPOSED CONC DITCH
- ⑤ PARKWAY DRAIN PER TOWN OF YV SD #406
- ⑥ PROPOSED DRYWELL PER TOWN OF YV SD #473
- ⑦ PROPOSED 6" SD
- ⑧ PROPOSED 4 INCH SD TO PW DRAIN
- ⑨ PROPOSED 36" BROOKS CB
- ⑩ PROPOSED PCC CONC PAVING
- ⑪ PROPOSED OFFSITE ADA RAMP PER TOWN YV SD #221
- ⑫ PROPOSED OFFSITE C/G 6" PER TOWN OF YV SD #200
- ⑬ NEW DW PER TOWN OF YV SD # 213
- ⑭ NEW SIDEWALK PER TOWN OF YV SD # 220
- ⑮ NEW AC CURB -BERM TRANSITION (TEMP) PER SD # 202
- ⑯ PROPOSED 3" TO 6" GROUTED RIP RAP OUTFALL
- ⑰ INSTALL NEW PAVEMENT LINE MARKINGS FOR STALLS
- ⑱ INSTALL NEW PAVEMENT MARKINGS FOR ADA STALLS
- ⑲ INSTALL NEW CONC CAR WHEEL STOPS

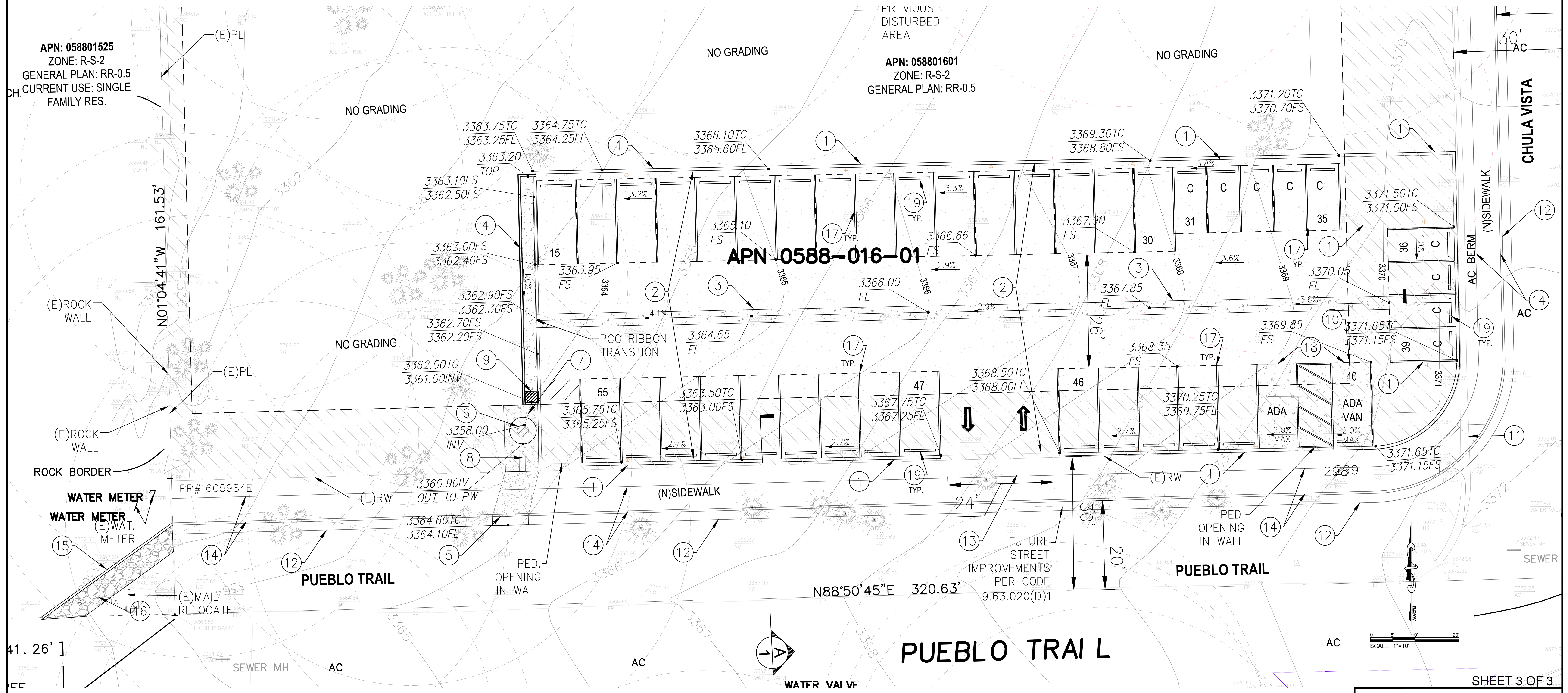
PRELIMINARY GRADING PLAN

57889 PUEBLO TRAIL, YUCCA VALLEY, CA 92284

APN: 058801601

LEGEND:

	CENTERLINE		EXIST. STORM DRAIN MANHOLE		EDGE OF PAVEMENT
	PROPERTY LINE		EXIST. WATER METER		FINISHED FLOOR
	WATER LINE		EXIST. WATER VALVE		FINISHED GROUND
	SEWER LINE		EXIST. TREE		FLOW LINE
	ELECTRIC LINE		CONCRETE PAVING		GRADE BREAK
	GAS LINE		ROCK WALL AREA		HIGH POINT
	EXIST. CHAIN LINK FENCE		LANDSCAPE		INVERT ELEVATION
	EXIST. WOOD FENCE		SETBACK AREAS		PAD ELEVATION
	EXIST. CONTOUR LINE		AC PAVING		RETAINING WALL
	EXIST. SPOT ELEVATION		RIP RAP FALL OUT		TOP OF CURB
	EXIST. FIRE HYDRANT				TOP OF GRATE
	EXIST. POWER POLE		JOSHUA TREE		
	EXIST. SEWER MANHOLE				



SHEET 3 OF 3

DRP ENTERPRISES LLC
 Daniel Patneque
 MAILING ADDRESS:
 PO Box 4428
 Palm Springs, CA 92263
 206-734-7765
 Joanne C. Singer RCE 26900
 760-625-7426
 DATE: 10/31/2025