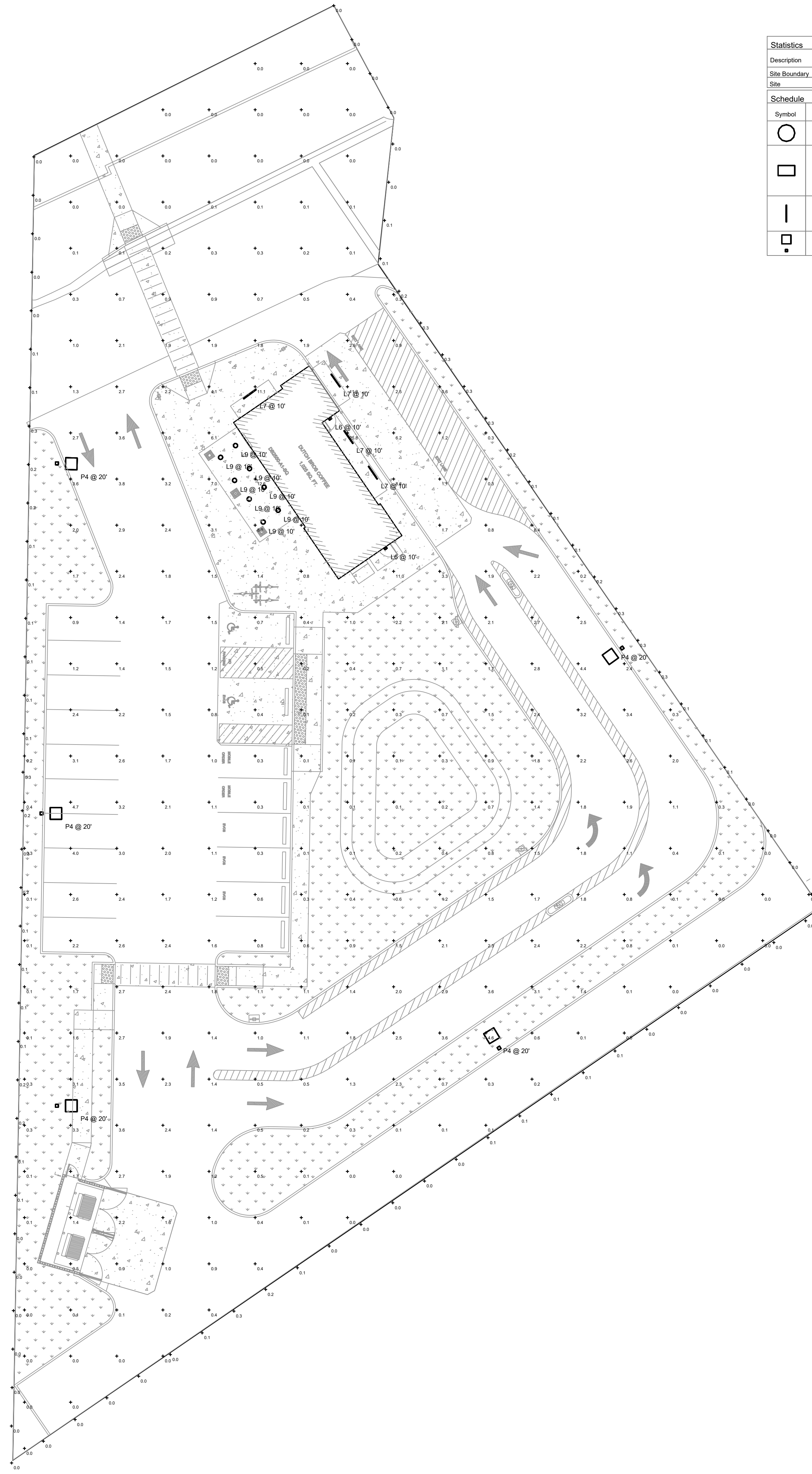


The name DUTCH BROS. and all associated logos, distinctive designs, content, information, and other materials featured, displayed, contained herein, and made available by Dutch Bros., including but not limited to, the "hook and leaf" of the establishments and products, all text, images, colors, configurations, graphics, designs, illustrations, photographs, and pictures (collectively, the "Materials") are owned by and/or licensed by DB Franchising USA, LLC and are protected by copyright, trademark, trade dress, patent, and/or other intellectual property rights and under competition laws under the United States and foreign laws.



Statistics						
Description	Symbol	Avg	Max	Min	Max/Min	Avg/Min
Site Boundary	+	0.1 fc	0.3 fc	0.0 fc	N/A	N/A
Site	+	1.5 fc	29.8 fc	0.0 fc	N/A	N/A

Schedule							
Symbol	Label	QTY	Manufacturer	Catalog	Description	Number Lamps	Input Power
○	L9	8	DMF LIGHTING	DRD55-4R-10930	DRD55-4R-10930	1	11.8
□	L6	2	RAB LIGHTING INC.	WPLED26-WPLED26/D10 (WALLPACK) - ALED26-ALED26/D10 (AREA LIGHTER)	CAST FINNED METAL HOUSING, MACHINED METAL HEAT SINK, 1 CIRCUIT BOARD WITH 1 LED, MOLDED PLASTIC REFLECTOR WITH SEMI-SPECULAR FINISH, CLEAR FLAT GLASS LENS IN CAST BROWN PAINTED METAL FRAME.	1	30
	L7	4	Self	WPLED26-WPLED26/D10 (WALLPACK) - ALED26-ALED26/D10 (AREA LIGHTER)	CROWN-L90-277V 830_BA110	1	40
□	P4	5	NLS Lighting	NV-1-T4-48L-1-40K-UNV-HSS	T4 OPTICS WITH BLACK HSS	1	156



1001 SE SANDY BLVD, SUITE 100
 PORTLAND, OR 97214
 V. 503.552.9079
 F. 503.241.7055
 WWW.GNICHARCH.COM

04/24/25

Project No: CA3714
 Dutch Bros Coffee - New Freestanding Store
 58121 29 Palms Hwy
 Yucca Valley, CA 92284
 For: Dutch Bros Coffee
 110 SW 4th Street
 Grants Pass, OR 97526

DB2550-A150

ISSUED FOR DESIGN REVIEW:
 04.24.2025

REV	DATE	DESCRIPTION

SHEET NAME:

PHOTOMETRIC PLAN

SHEET NUMBER:

DRP4.0

Imperial Lighting L7

Job: Dutch Brothers Coffee
Descr: Canopy 6' light

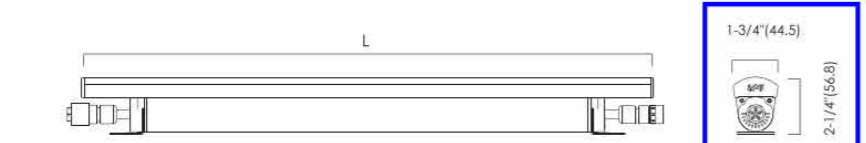
Outdoor Cove Lighting CROWN



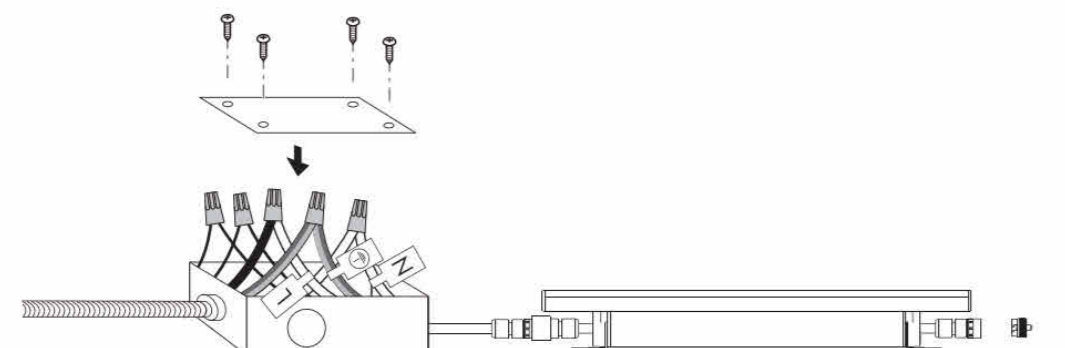
- Quick connection
- Dimmable, 1-10V dimming to 10%-100%
- Unbreakable, max. linkable length: 7'7" @ 120VAC, 15' @ 277VAC
- Finishing: IP66 (for wet locations)
- Lockable, precision aiming adjustment:
- 82° Vertical rotation
- Lifetime: 50,000hrs (at 95%⁺, 35°C)
- Temp: -39° to 122°F (-39°C - 50°C)
- Material: Aluminum alloy
- 10W/ft, 1000lm/ft



Dimensions: (inches/mm)



Wiring Diagram

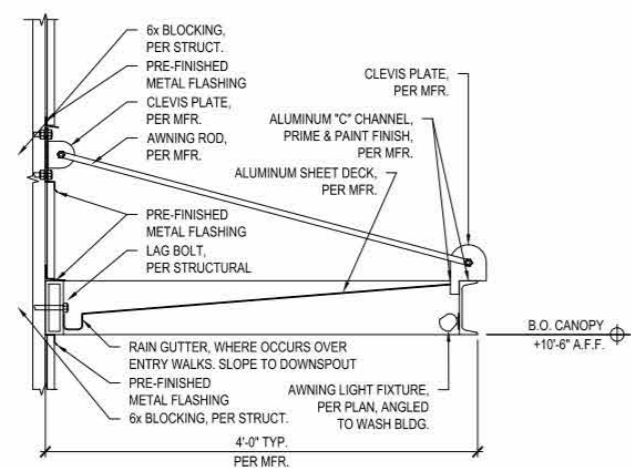


AC connection:

- Black: "L"
- White: "N"
- Yellow/green: "G"

Dimming connection:

- Violet: "+"
- Gray: "-"



Outdoor Cove Lighting CROWN

How to order using our catalog numbers:
Example: CROWN-1230K1055

Series	Length	Color Temp	Beam Angle	Finish	Installation
CROWN	12 - 11.8" (305mm) 47 - 47" (1200mm) 70 - 70" (178mm)	30K - 3000K 40K - 4000K	110 - 110°	1 - Silver	3 - Screw Mounting

Catalog No.	Model	Rated Input	Ro	Wattage	Luminous Flux (TYP@4000K)	Included
CROWN-1230K1055	CROWN-L24-277V	120-277VAC	85	10W	1050 lm	
CROWN-1240K1055	CROWN-L24-277V	120-277VAC	85	10W	1050 lm	
CROWN-4730K1055	CROWN-L90-277V	120-277VAC	85	40W	4200 lm	1 pc. LED Fixture 2 pcs. Screws 1 pc. End cap
CROWN-4740K1055	CROWN-L90-277V	120-277VAC	85	40W	4200 lm	
CROWN-7030K1055	CROWN-L144-277V	120-277VAC	85	60W	6300 lm	
CROWN-7040K1055	CROWN-L144-277V	120-277VAC	85	60W	6300 lm	

How to choose your driver & cables:

Catalog No.	Description	Photo
IC-CROWN-59	Input cable 59"	

Optional:

Catalog No.	Description	Photo
SC-CROWN-12	Soft connector 12"	
TK-CROWN-79	Track 79", including 3pcs screws	

UMT-31416-DBNA L4
Matrix 3 Surface

7144 NE Progress Ct | 1.503.645.0500
Hillsboro Oregon 97124 | F.503.645.8100
www.ligmanlightingusa.com



UMT-31416-DBNA L4
Matrix 3 Surface

7144 NE Progress Ct | 1.503.645.0500
Hillsboro Oregon 97124 | F.503.645.8100
www.ligmanlightingusa.com



Construction
Aluminum
Less than 0.1% copper content - Marine Grade 6060 extruded 6 LMS Aluminum High Pressure die casting provides excellent mechanical strength, clean detailed product lines and excellent heat dissipation.

Pre-paint
8 step degrease and phosphate process that includes descaling and etching as well as a zinc and nickel phosphate process before product painting.

Memory Retentive Silicon Gasket
Provided with special injection molded "fit for purpose" long life high temperature memory retentive silicon gaskets. Maintains the gaskets exact profile and seal over years of use and compression.

Thermal management
LMS Aluminum is used for its excellent mechanical strength and thermal dissipation properties in low and high ambient temperatures. The superior thermal heat sink design by Ligman used in conjunction with the drivers controls thermal below critical temperature range to ensure maximum luminous flux output, as well as providing long LED service life and ensuring less than 10% lumen depreciation at 50,000 hours.

Surge Suppression
Standard 10kv surge suppressor provided with all fixtures.

BUG Rating
BI - IP55 - G0

Finishing
All Ligman products go through an extensive finishing process that includes wetting to improve paint adherence.

Paint
UV Stabilized 4.9Ml thick powder coat paint and baked at 200 deg C. This process ensures that Ligman products can withstand harsh environments. Rated for use in natatoriums.

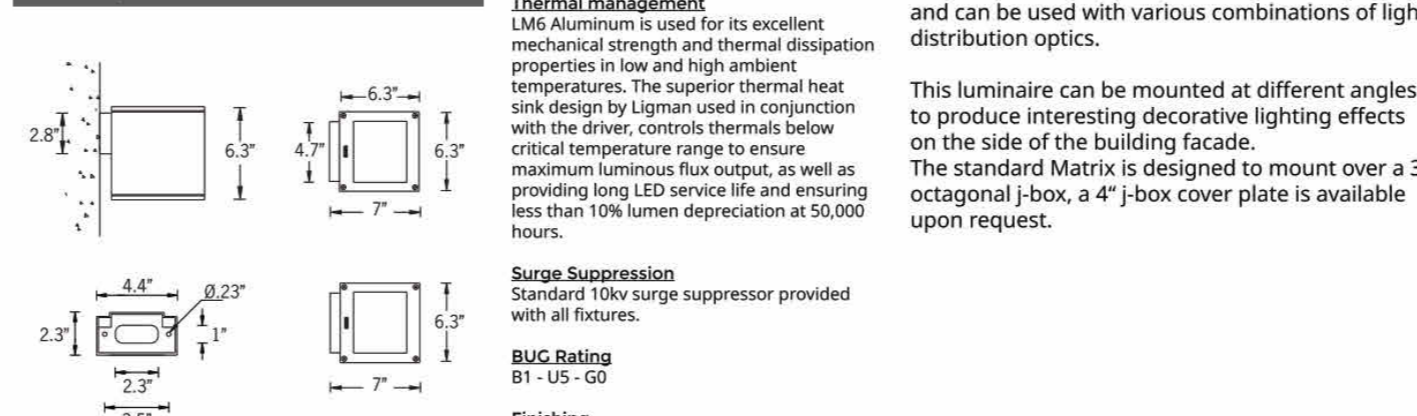
Hardware
Provided Hardware is Marine grade 316 Stainless steel.

Anti-Seize Screw Holes
Tapped holes are infused with a special anti-seize compound designed to prevent seizure of threaded connections, due to electrolysis from heat, corrosive atmospheres and moisture.

Crystal Clear Low Iron Glass Lens
Provided with tempered, impact resistant crystal clear low iron glass ensuring no green glass tinge.

Optics & LED
Precision optic design provides exceptional light control and precise distribution of light. LED CRF - 80

Lumen - Maintenance Life
L80/B10 at 50,000 hours (This means that at least 80% of the LED still achieve 80% of their original flux).



Length - 7" | Height - 6.3" | Weight 4.8 lbs
IP65 - Suitable For Wet Locations
IK04 - Impact Resistant (Vandal Resistant)

Matrix Product Family

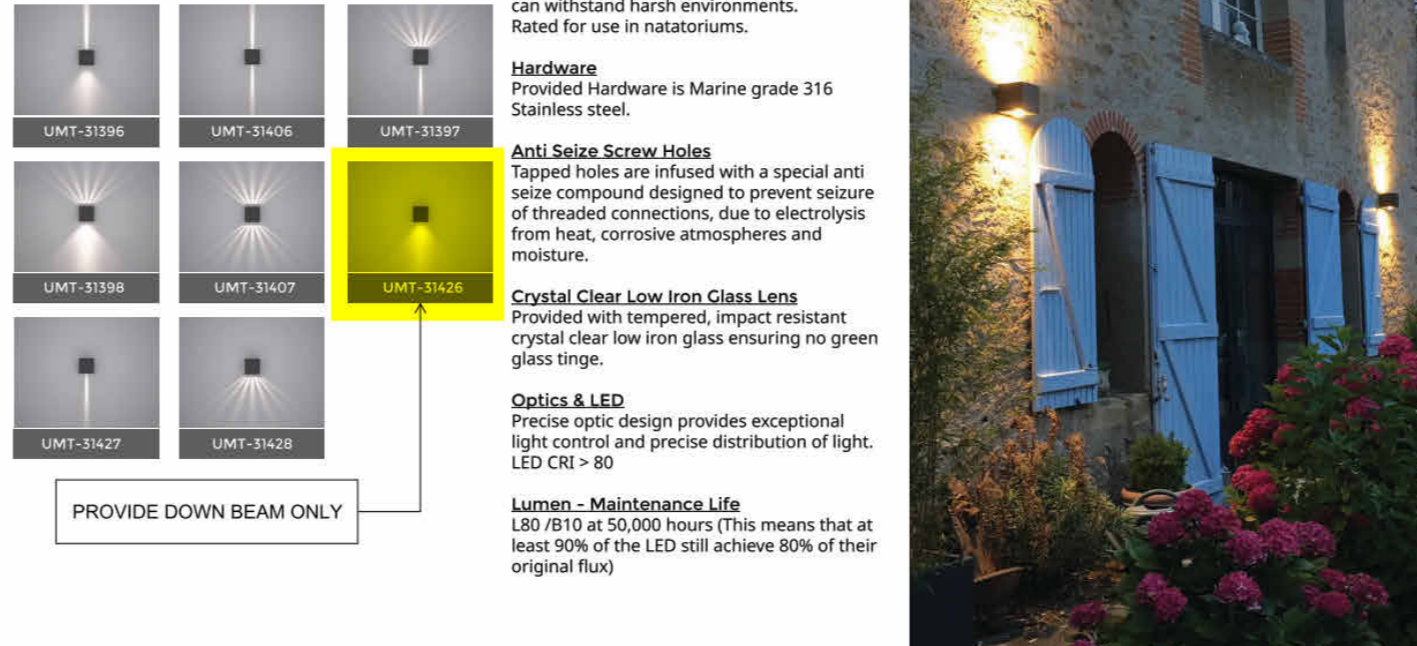


Image depicting the fixture in a typical application. The fixture is shown in a wall-mounted application. The fixture is shown in a wall-mounted application. The fixture is shown in a wall-mounted application.

PROJECT _____ **DATE** _____

QUANTITY _____ **TYPE** _____ **NOTE** _____

ORDERING EXAMPLE || UMT - 31416 - 14/14w - W30 - 02 - 120/277v - Options

LAMP	BEAM	LED COLOR	FINISH COLOR	VOLTAGE
14/14w COB 120 Lumens Down 1028 Lumens Up	N - Narrow 20° M - Medium 25° W - Wide 36° VW - Very Wide 74°	W27 - 2700K W30 - 3000K W35 - 3500K W40 - 4000K	01 - BLACK RAL 9011 02 - DARK GREY RAL 7045 03 - WHITE RAL 9003 04 - METALLIC SILVER RAL 9006 05 - MATTE SILVER RAL 9008 06 - LIGMAN BRONZE 07 - CUSTOM RAL	120/277v Other - Specify

ADDITIONAL OPTIONS

NAT - Natatorium Rated	COLORED DICHROIC FILTERS
F - Frosted Lens	RD - Red Lens
42 - Mounting Plate for 4" Junction Box	BL - Blue Lens
DIM - 0-10v Dimming	GR - Green Lens
	AM - Amber Lens
	(Specify Other Color)

PROJECT _____ **DATE** _____

QUANTITY _____ **TYPE** _____ **NOTE** _____

ORDERING EXAMPLE || UMT - 31416 - 14/14w - W30 - 02 - 120/277v - Options

ADDITIONAL OPTIONS

NAT - Natatorium Rated	COLORED DICHROIC FILTERS
F - Frosted Lens	RD - Red Lens
42 - Mounting Plate for 4" Junction Box	BL - Blue Lens
DIM - 0-10v Dimming	GR - Green Lens
	AM - Amber Lens
	(Specify Other Color)

PROJECT _____ **DATE** _____

QUANTITY _____ **TYPE** _____ **NOTE** _____

ORDERING EXAMPLE || UMT - 31416 - 14/14w - W30 - 02 - 120/277v - Options

ADDITIONAL OPTIONS

NAT - Natatorium Rated	COLORED DICHROIC FILTERS
F - Frosted Lens	RD - Red Lens
42 - Mounting Plate for 4" Junction Box	BL - Blue Lens
DIM - 0-10v Dimming	GR - Green Lens
	AM - Amber Lens
	(Specify Other Color)

PROJECT _____ **DATE** _____

QUANTITY _____ **TYPE** _____ **NOTE** _____

ORDERING EXAMPLE || UMT - 31416 - 14/14w - W30 - 02 - 120/277v - Options

ADDITIONAL OPTIONS

NAT - Natatorium Rated	COLORED DICHROIC FILTERS
F - Frosted Lens	RD - Red Lens
42 - Mounting Plate for 4" Junction Box	BL - Blue Lens
DIM - 0-10v Dimming	GR - Green Lens
	AM - Amber Lens
	(Specify Other Color)

PROJECT _____ **DATE** _____

QUANTITY _____ **TYPE** _____ **NOTE** _____

ORDERING EXAMPLE || UMT - 31416 - 14/14w - W30 - 02 - 120/277v - Options

ADDITIONAL OPTIONS

NAT - Natatorium Rated	COLORED DICHROIC FILTERS
F - Frosted Lens	RD - Red Lens
42 - Mounting Plate for 4" Junction Box	BL - Blue Lens
DIM - 0-10v Dimming	GR - Green Lens
	AM - Amber Lens
	(Specify Other Color)

PROJECT _____ **DATE** _____

QUANTITY _____ **TYPE** _____ **NOTE** _____

ORDERING EXAMPLE || UMT - 31416 - 14/14w - W30 - 02 - 120/277v - Options

ADDITIONAL OPTIONS

NAT - Natatorium Rated	COLORED DICHROIC FILTERS
F - Frosted Lens	RD - Red Lens
42 - Mounting Plate for 4" Junction Box	BL - Blue Lens
DIM - 0-10v Dimming	GR - Green Lens
	AM - Amber Lens
	(Specify Other Color)

PROJECT _____ **DATE** _____

QUANTITY _____ **TYPE** _____ **NOTE** _____

ORDERING EXAMPLE || UMT - 31416 - 14/14w - W30 - 02 - 120/277v - Options

ADDITIONAL OPTIONS

NAT - Natatorium Rated	COLORED DICHROIC FILTERS
F - Frosted Lens	RD - Red Lens
42 - Mounting Plate for 4" Junction Box	BL - Blue Lens
DIM - 0-10v Dimming	GR - Green Lens
	AM - Amber Lens
	(Specify Other Color)

PROJECT _____ **DATE** _____

QUANTITY _____ **TYPE** _____ **NOTE** _____

ORDERING EXAMPLE || UMT - 31416 - 14/14w - W30 - 02 - 120/277v - Options

ADDITIONAL OPTIONS

NAT - Natatorium Rated	COLORED DICHROIC FILTERS
F - Frosted Lens	RD - Red Lens
42 - Mounting Plate for 4" Junction Box	BL - Blue Lens
DIM - 0-10v Dimming	GR - Green Lens
	AM - Amber Lens
	(Specify Other Color)

PROJECT _____ **DATE** _____

QUANTITY _____ **TYPE** _____ **NOTE** _____

ORDERING EXAMPLE || UMT - 31416 - 14/14w - W30 - 02 - 120/277v - Options

ADDITIONAL OPTIONS

NAT - Natatorium Rated	COLORED DICHROIC FILTERS
F - Frosted Lens	RD - Red Lens
42 - Mounting Plate for 4" Junction Box	BL - Blue Lens
DIM - 0-10v Dimming	GR - Green Lens
	AM - Amber Lens
	(Specify Other Color)

PROJECT _____ **DATE** _____

QUANTITY _____ **TYPE** _____ **NOTE** _____

ORDERING EXAMPLE || UMT - 31416 - 14/14w - W30 - 02 - 120/277v - Options

ADDITIONAL OPTIONS

NAT - Natatorium Rated	COLORED DICHROIC FILTERS
F - Frosted Lens	RD - Red Lens
42 - Mounting Plate for 4" Junction Box	BL - Blue Lens
DIM - 0-10v Dimming	GR - Green Lens
	AM - Amber Lens
	(Specify Other Color)

PROJECT _____ **DATE** _____

QUANTITY _____ **TYPE** _____ **NOTE** _____

ORDERING EXAMPLE || UMT - 31416 - 14/14w - W30 - 02 - 120/277v - Options

ADDITIONAL OPTIONS

NAT - Natatorium Rated	COLORED DICHROIC FILTERS
F - Frosted Lens	RD - Red Lens
42 - Mounting Plate for 4" Junction Box	BL - Blue Lens
DIM - 0-10v Dimming	GR - Green Lens
	AM - Amber Lens
	(Specify Other Color)

PROJECT _____ **DATE** _____

QUANTITY _____ **TYPE** _____ **NOTE** _____

ORDERING EXAMPLE || UMT - 31416 - 14/14w - W30 - 02 - 120/277v - Options

ADDITIONAL OPTIONS

NAT - Natatorium Rated	COLORED DICHROIC FILTERS
F - Frosted Lens	RD - Red Lens
42 - Mounting Plate for 4" Junction Box	BL - Blue Lens
DIM - 0-10v Dimming	GR - Green Lens
	AM - Amber Lens
	(Specify Other Color)

PROJECT _____ **DATE** _____

QUANTITY _____ **TYPE** _____ **NOTE** _____

ORDERING EXAMPLE || UMT - 31416 - 14/14w - W30 - 02 - 120/277v - Options

ADDITIONAL OPTIONS

NAT - Natatorium Rated	COLORED DICHROIC FILTERS
F - Frosted Lens	RD - Red Lens
42 - Mounting Plate for 4" Junction Box	BL - Blue Lens
DIM - 0-10v Dimming	GR - Green Lens
	AM - Amber Lens
	(Specify Other Color)

PROJECT _____ **DATE** _____

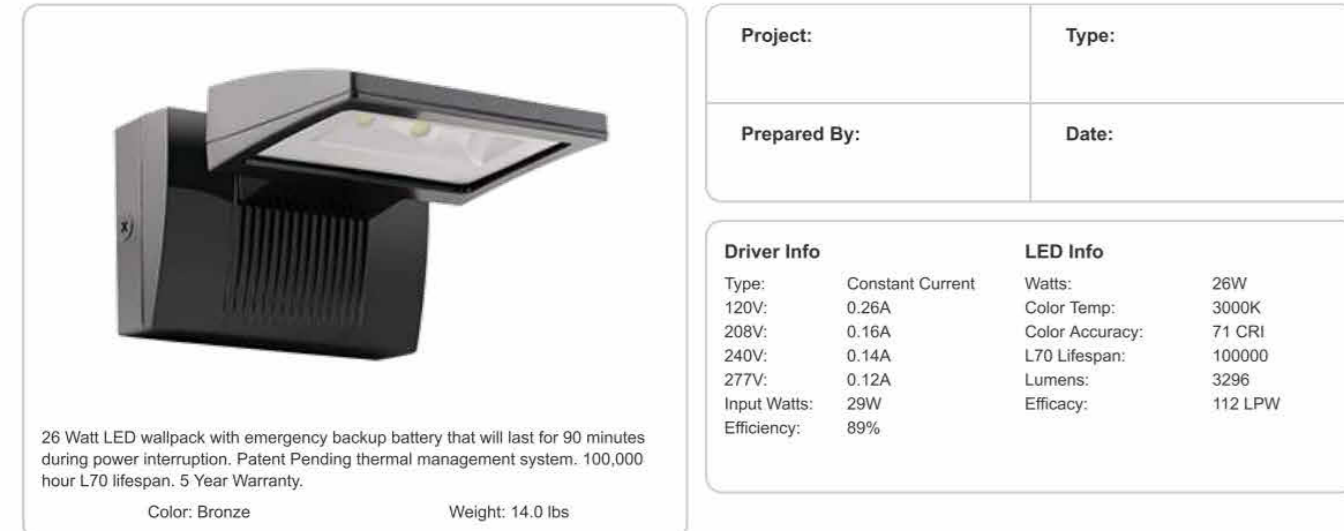
QUANTITY _____ **TYPE** _____ **NOTE** _____

ORDERING EXAMPLE || UMT - 31416 - 14/14w - W30 - 02 - 120/277v - Options

Imperial Lighting L6

Job: Dutch Brothers Coffee Prototype
Descr: Exterior Wallpack

WPLED26Y/E RAB



Project: _____ **Type:** _____

Prepared By: _____ **Date:** _____

Driver Info		LED Info	
Type:	Constant Current	Watts:	26W
120V:	0.26A	Color Temp:	3000K
208V:	0.16A	Color Accuracy:	71 CRI
240V:	0.14A	L70 lifespan:	100000
277V:	0.12A	Lumens:	3239
Input Watts:	29W	Efficiency:	112 LPW
Efficiency:	89%		

Technical Specifications

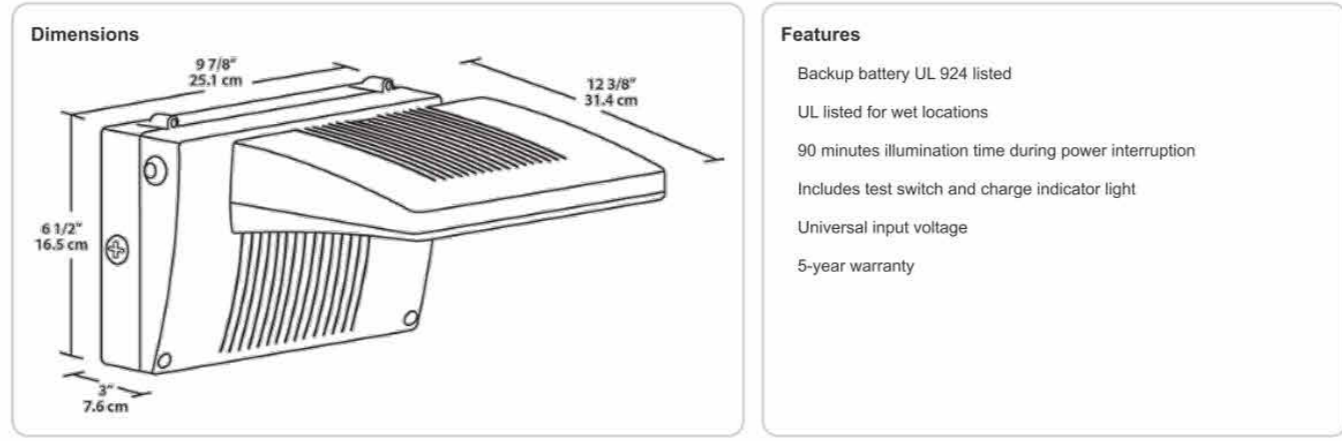
Other
Battery Backup: Minimum starting temperature is 0°C/32°F.
Patents: The WPLED design is protected by U.S. Patent D634878 and Patents pending in the U.S., Canada, China, Taiwan and Mexico.
Equivalency: Equivalent to 175W Metal Halide.
FTC Country of Origin: This product was assembled in the USA by RAB using imported components.
Buy American Act Compliance: This product complies with the Buy American Act.
Listings: DLC Listed: This product is on the Design Lights Consortium (DLC) Qualified Products List and is eligible for rebates from DLC Member Utilities.
UL Listing: Suitable for Wet Locations as downlight. Wall Mount Only. Battery Backup UL 924 Listed Emergency Lighting Power Supply.

LED Characteristics
Lifespan: 100,000-hour LED lifespan based on IES LM-80 results and TM-21 calculations.
LED: Two (2) 13W high-output, long-life LEDs.
Color Consistency: 3-step MacAdam Ellipse binning to achieve consistent fixture-to-fixture color.
Color Stability: High temperature silicone.
Color Uniformity: RAB's range of CCT (Correlated Color Temperature) follows the guidelines of the American National Standard for Specifications for the Chromaticity of Solid State Lighting (SSL) Products, ANSI C78.377-2017.

Battery Backup
Backup Battery: Two fully-replaceable, high-temperature, maintenance-free, nickel-cadmium batteries.
Construction: Precision die-cast aluminum housing, lens frame and mounting arm.
Ambient Temperature: Suitable for use in 35°C (95°F) ambient temperatures.
Gaskets: High temperature silicone.
Housing: Precision die-cast aluminum housing, lens frame and mounting arm.
Finish: Formulated for high-durability and long-lasting color.
Green Technology: Memory and UV free. RAB's compliant components. Polyester powder-coat finish formulated without the use of VOC or toxic heavy metals.

Optical
BUG Rating: B1 UD G0

WPLED26Y/E RAB



Ordering Matrix

Family	Wattage	Color Temp	Finish	Battery Backup	Photocell
WPLED	26 = 26W	Blank = 5000K (Cool) Y = 3000K (Warm) N = 4000K (Neutral)	Blank = Bronze W = White	BE = Battery Backup IEC = Cold Start Battery Backup	Blank = No Photocell IPC = 120V Button PCS = 120V Switch PC2 = 277V Switch

Verify required

Dimensions
9 3/8" 25.1 cm
12 3/8" 31.2 cm
6 1/2" 16.3 cm
7.8 cm

Features
Backup battery UL 924 listed
UL listed for wet locations
90 minutes illumination time during power interruption
Includes test switch and charge indicator light
Universal input voltage
5-year warranty

Imperial Lighting P

Job: Dutch Bros
Descr: Pole Head - Prototype Selection Dec. 2019

AREA LIGHTING NV-1-ASA



FORM AND FUNCTION
• Sleek, low profile housing
• Spec grade performance
• Engineered for optimum thermal management
• Low depreciation rate
• Reduces energy consumption and costs up to 65%
• Exceeds IES foot candle levels utilizing the least number of poles and fixtures per project
• Optical system designed for:
- Parking Lots
- Auto Dealerships
- General Area Lighting

CONSTRUCTION
• Die Cast Aluminum
• External cooling fins, Finite Element Analysis (FEA) designed
• Corrosion resistant external hardware
• One-piece silicone gasket ensures IP-65 seal for electronics compartment
• One-piece Optics Plate™ mounting silicone Micro Optics
• Two-piece silicone Micro Optic system ensures IP-67 level seal around each PCB
• Grade 2 Clear Anodized Optics Plate™ standard

FINISH
• 3-5 mils electrostatic powder coat.
• NLS' standard high-quality finishes prevent corrosion protects against extreme environmental conditions

WARRANTY
Five-year limited warranty for drivers and LEDs.

LISTINGS
• Certified to UL 1598
• UL 8750
• CSA C22.2 No. 250.0
• DesignLights Consortium™ (DLC)
• DesignLights Consortium Premium™ (DLC-P)
• IP65/IP67 Rated
• 3G Vibration Rated per ANSI C136.31-2010

LED WATTAGE CHART

	10L	22L	44L	64L
350 millamps	10w	20w	30w	40w
500 millamps	20w	40w	60w	80w
700 millamps	30w	60w	90w	120w
1000 millamps	40w	80w	120w	160w

Project Name: _____ **Type:** _____

Cat #	Light Dist.	No. of LEDs	Millamps	Wattage	Beam	Mounting	Color	Options
NV-1 (NV-1)	Type 2 (T2)	16 (16A)	3					

