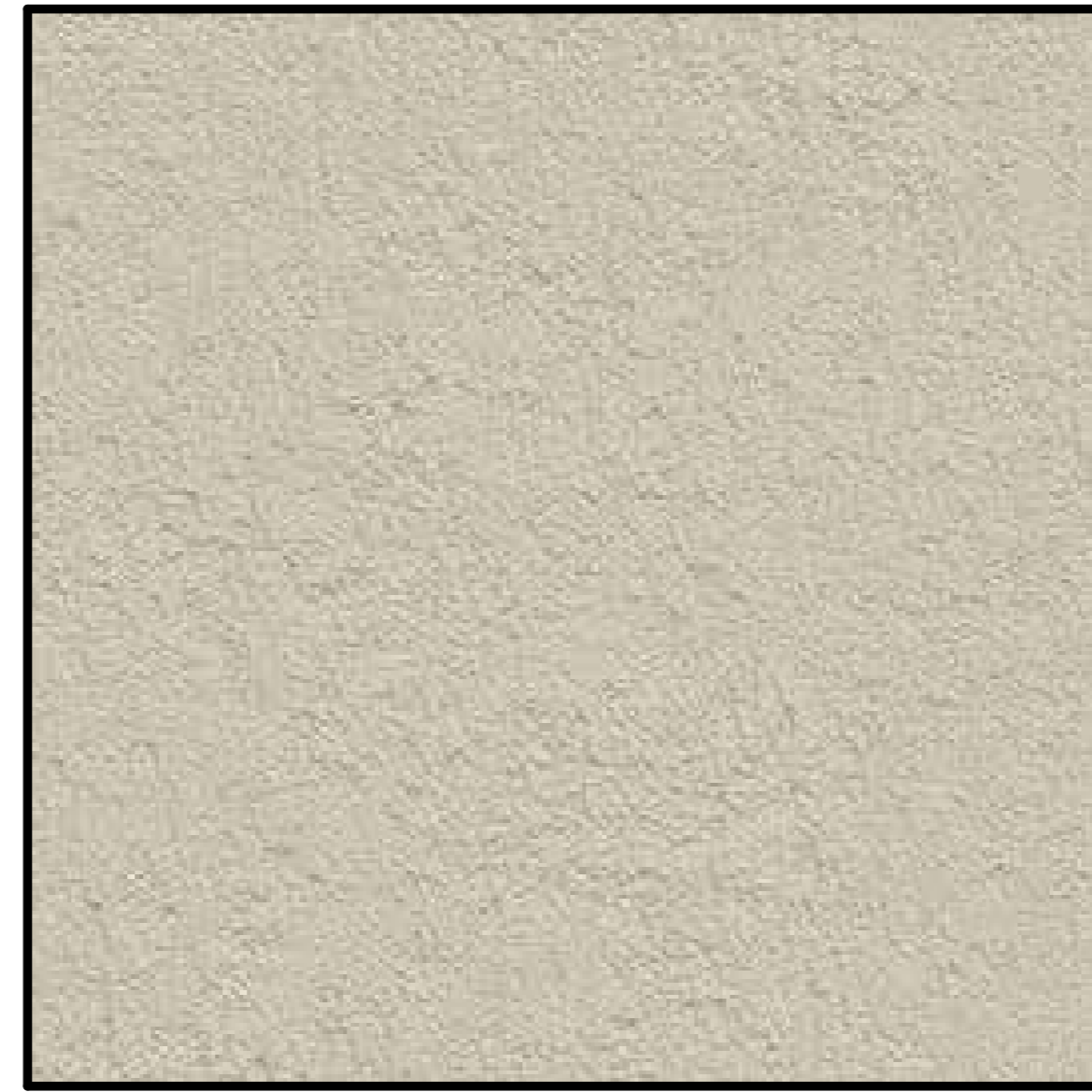


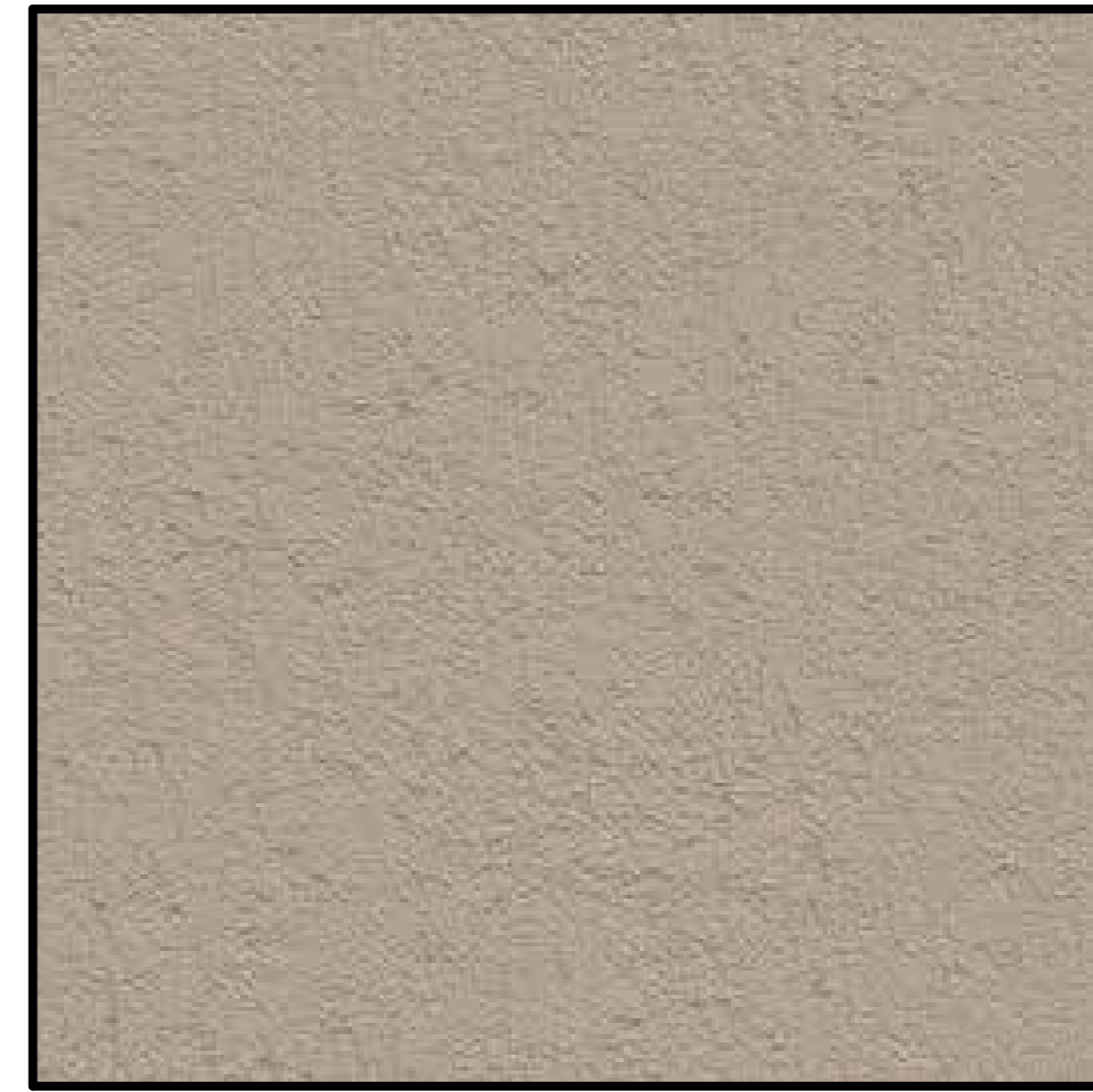
The name DUTCHBROS and all associated logos, distinctive designs, content, information, and other materials featured, displayed, contained herein, and made available by Dutch Bros, including but not limited to, the "look and feel" of the establishments and products, all text, images, colors, configurations, graphics, designs, illustrations, photographs, and pictures (collectively, the "Materials") are owned by and/or licensed by DB Franchising USA, LLC and are protected by copyright, trademark, trade dress, patent, and/or other intellectual property rights and unfair competition laws under the United States and foreign laws.



FIBER CEMENT BOARD
 MANUFACTURER: NICHHA
 PROFILE: ILLUMINATION
 COLOR: BLDG DB BLUE



STUCCO SYSTEM
 MANUFACTURER: DRYVIT
 PROFILE: CCP-2 SYSTEM,
 SANDPEBBLE FINE E FINISH
 COLOR: PAINTED, CLASSIC LIGHT BUFF



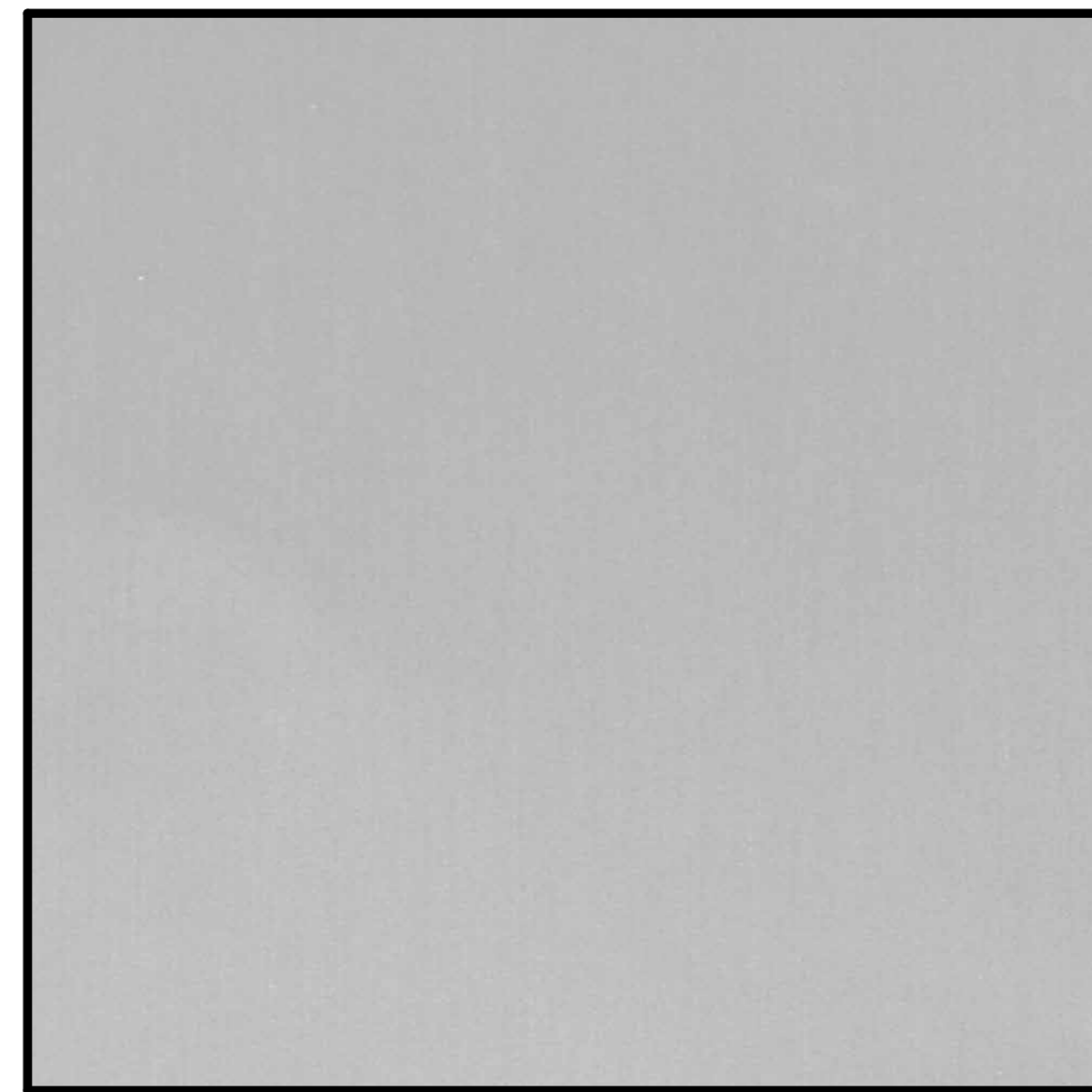
STUCCO SYSTEM
 MANUFACTURER: DRYVIT
 PROFILE: CCP-2 SYTEM,
 SANDPEBBLE FINE E FINISH
 COLOR: PAINTED, RENWICK BEIGE



CULTURED STONE
 MANUFACTURER: ELDORADO STONE
 PROFILE: CLIFFSTONE - MONTECITO
 COLOR: PER MFR.



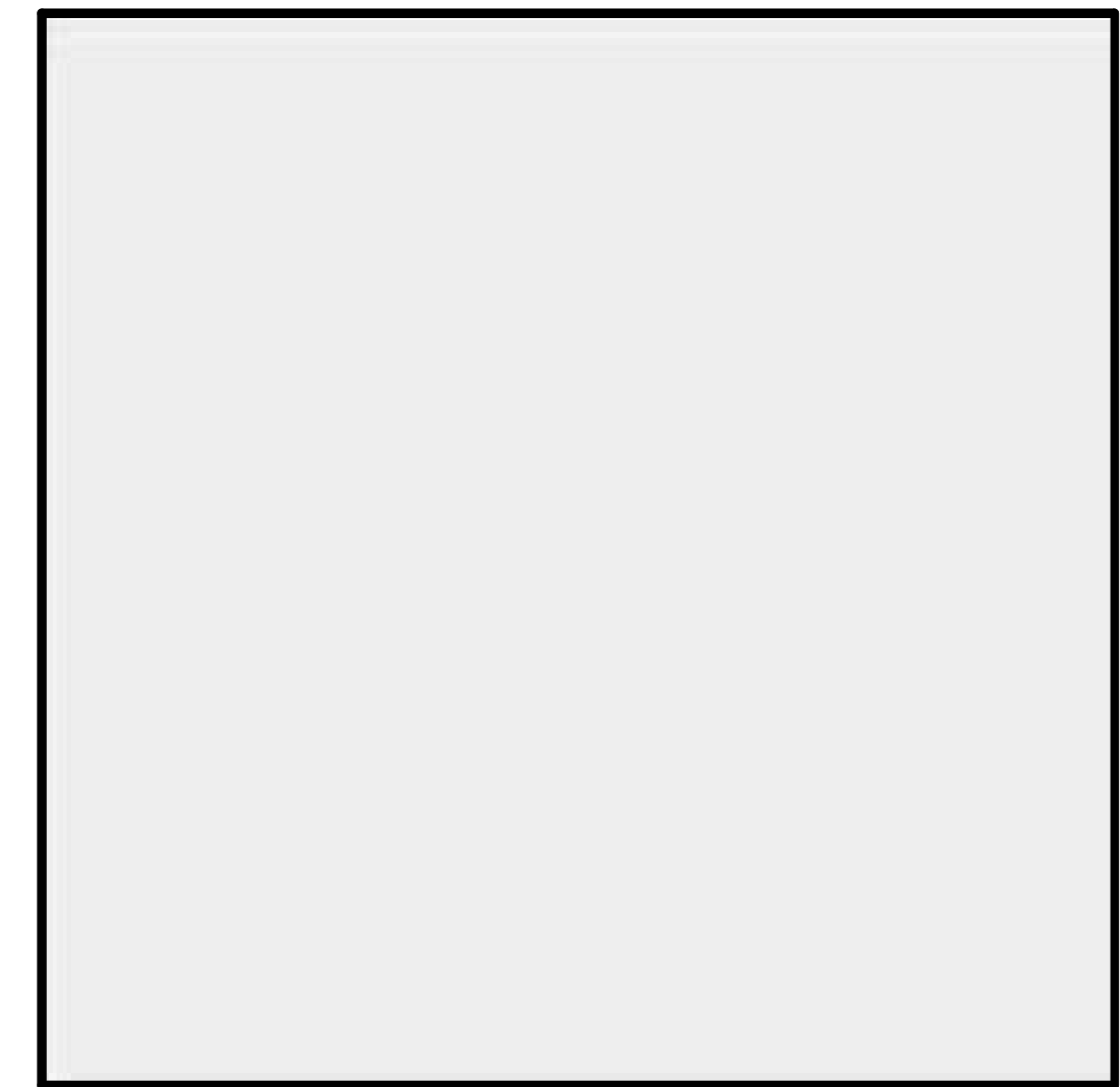
CANOPY SOFFIT
 MANUFACTURER: HEWN
 PROFILE: NW SPRUCE
 NATURAL & SEALED
 COLOR: PER MFR.



WINDOW SYSTEM
 MANUFACTURER: KAWNEER OR SIMILAR
 PROFILE: CLEAR ANODIZED ALUMINUM
 FINISH: CLEAR NO 14 / 17



AWNINGS & DOORS - PAINT
 MANUFACTURER: SHERWIN-WILLIAMS
 COLOR: BLDG DB GRAY DARK



ROOFING MATERIAL
 MANUFACTURER: DURO-LAST
 DL-60 - 60 MIL
 COLOR: WHITE



1001 SE SANDY BLVD, SUITE 100
 PORTLAND, OR 97214
 V. 503.552.9079
 F. 503.241.7055
 WWW.GNICHARCH.COM

04/24/25

Project No: CA3714

Dutch Bros Coffee - New Freestanding Store

58121 29 Palms Hwy

Yucca Valley, CA 92284

For: Dutch Bros Coffee

110 SW 4th Street

Grants Pass, OR 97526

DB2550-A1SQ

ISSUED FOR DESIGN
 REVIEW:
 04.24.2025

REV	DATE	DESCRIPTION

SHEET NAME:

MATERIAL BOARD

SHEET NUMBER:

DRP6.0

© 2023 DB Franchising USA, LLC