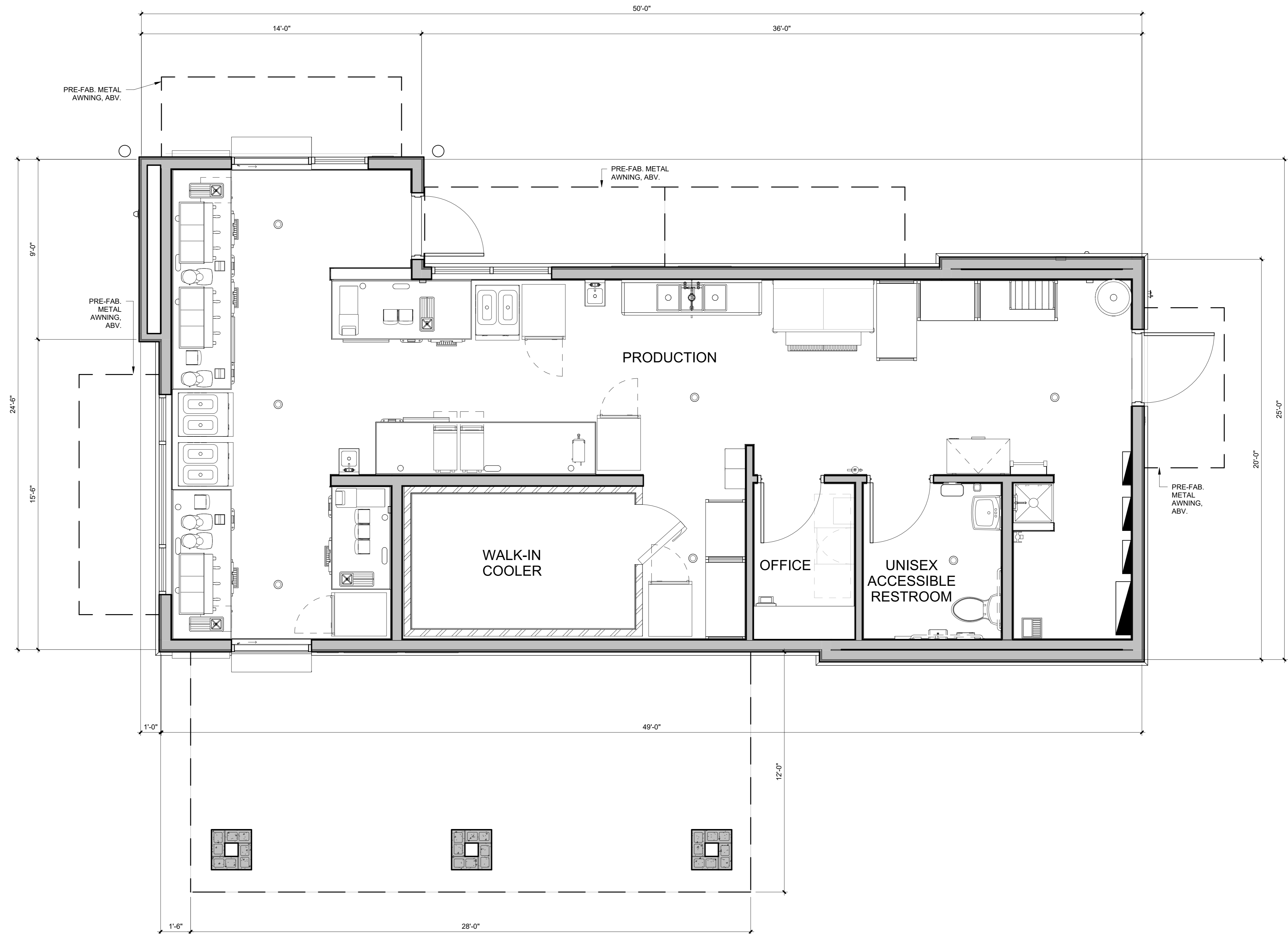


The name DUTCHBROS and all associated logos, distinctive designs, content, information, and other materials featured, displayed, contained herein, and made available by Dutch Bros, including but not limited to, the "look and feel" of the establishments and products, all text, images, colors, configurations, graphics, designs, illustrations, photographs, and pictures (collectively, the "Materials") are owned by and/or licensed by DB Franchising USA, LLC and are protected by copyright, trademark, trade dress, patent, and/or other intellectual property rights and unfair competition laws under the United States and foreign laws.



1 SCHEMATIC PLAN

3/8" = 1'-0"



1001 SE SANDY BLVD, SUITE 100
 PORTLAND, OR 97214
 V. 503.552.9079
 F. 503.241.7055
 WWW.GNICHARCH.COM

01/31/25

Project No: CA3714
 Dutch Bros Coffee - New Freestanding Store
 SWQ 29 Fairs Hwy,
 Yucca Valley, CA 92284
 For: Dutch Bros Coffee
 110 SW 4th Street
 Grants Pass, OR 97526

DB2550-A1SQ

ISSUED FOR DESIGN
 REVIEW:
 01.30.2025

REV	DATE	DESCRIPTION

SHEET NAME:

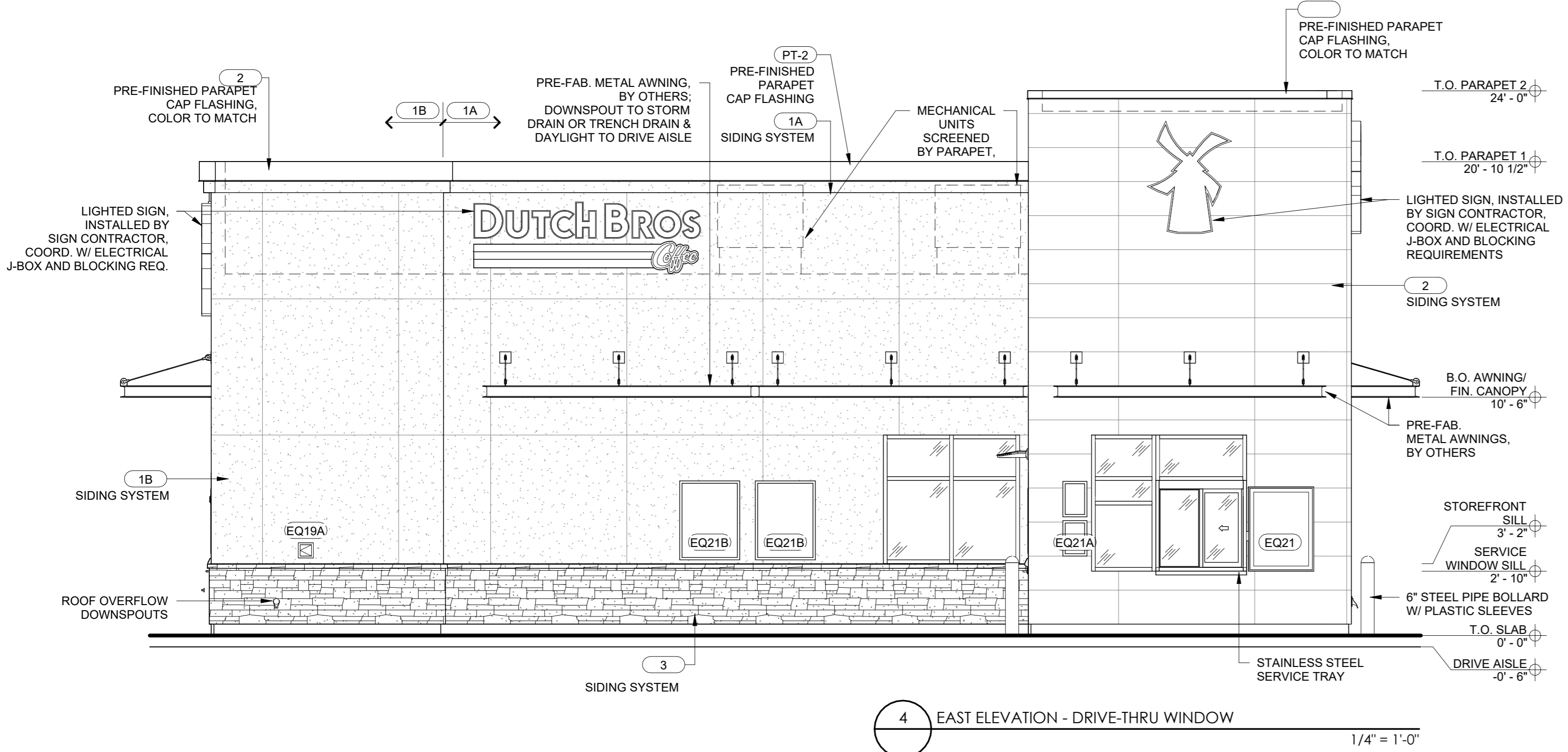
PLAN

SHEET NUMBER:

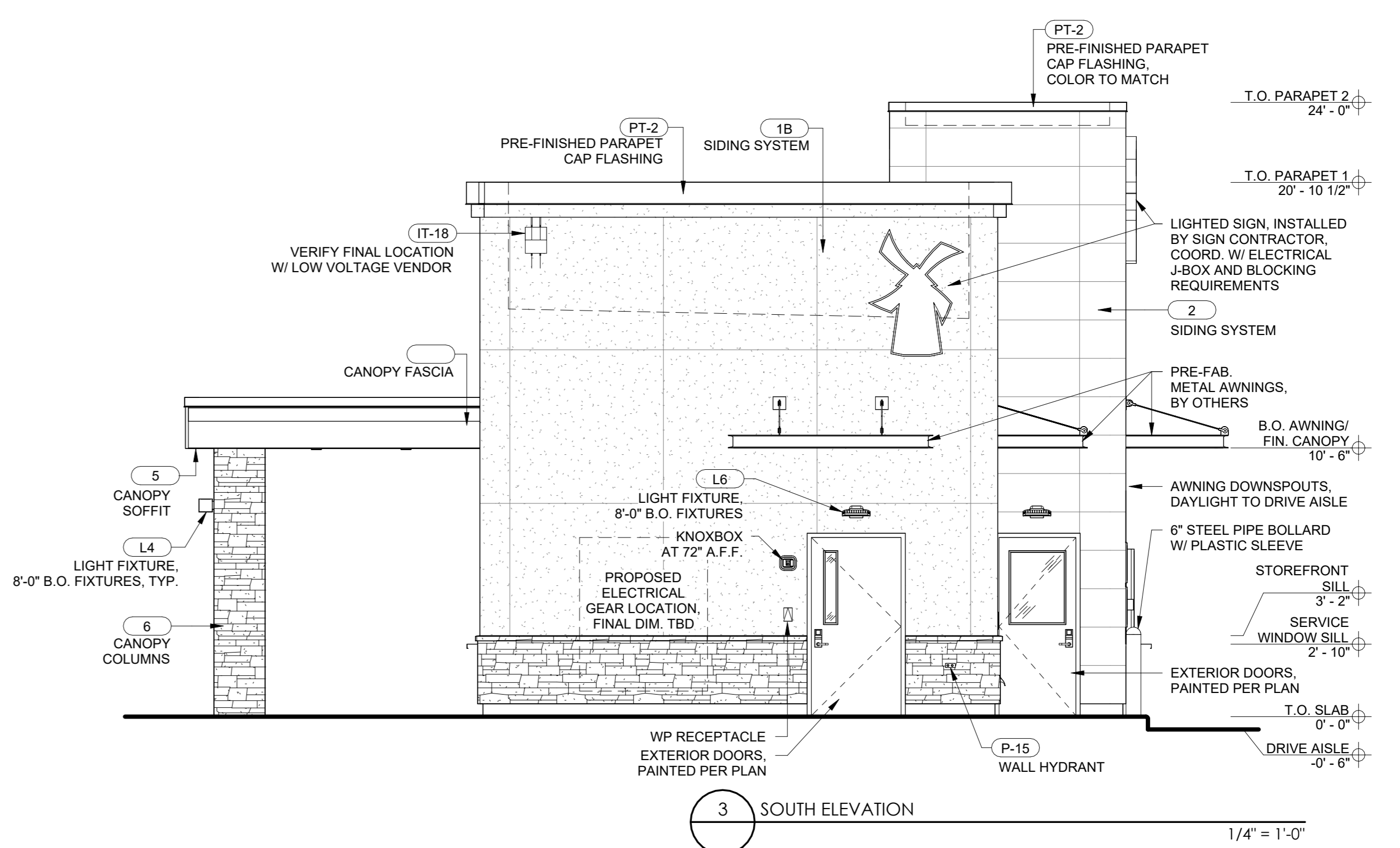
DRP1.0

The name DUTCHBROS, and all associated logos, distinctive designs, content, information, and other materials featured, displayed, contained herein, and made available by Dutch Bros, including but not limited to the "look and feel" of the establishments and products, all text, images, colors, configurations, graphics, designs, illustrations, photographs, and pictures, collectively, the "Materials" are owned by and/or licensed by DB Franchising USA, LLC and are protected by copyright, trademark, trade dress, patent, and/or other intellectual property rights and under applicable laws in the United States and foreign laws.

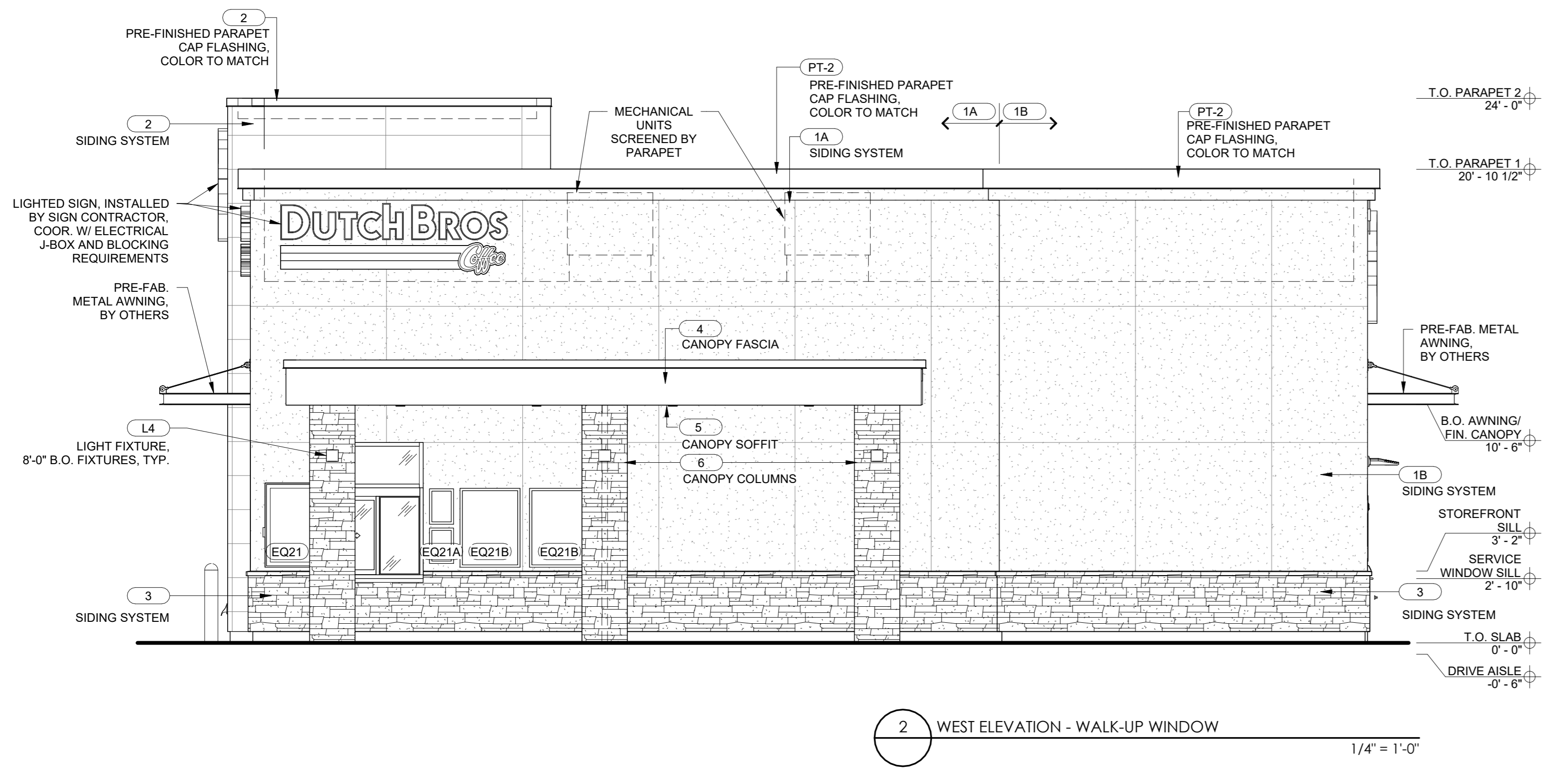
EXTERIOR FINISH SCHEDULE				
NOTE: GC TO PROVIDE 3"x2" SMOOTH DOWNSPOUTS AND ALL NECESSARY ADAPTORS AT AWNING AND CANOPY LOCATION; COLOR: BLDG DB DARK GRAY				
ID TAG	MATERIAL	MANUFACTURER	MODEL	REMARKS
ZONE 1 (BODY)				
1A	STUCCO	DRYVIT	CCP-2 SYSTEM, SANDPEBBLE FINE FINISH; REVEALS AS SHOWN	PAINTED; COLOR: CLASSIC LIGHT BUFF SW0050
1B	STUCCO	DRYVIT	CCP-2 SYSTEM, SANDPEBBLE FINE FINISH; REVEALS AS SHOWN	PAINTED; COLOR: RENWICK BEIGE SW2805
ZONE 2 (TOWER)				
2	FIBER CEMENT SIDING	NICHIHA	ILLUMINATION, AWP 1818 w/ FACTORY PANEL CORNERS	COLOR: BLDG DB BLUE
ZONE 3 (BASE)				
3	STONE VENEER	ELDORADO STONE	CLIFFSTONE, BANFF SPRINGS; COLOR: PER MFR.	
ZONE 4 (FRAMED CANOPY)				
4	FASCIA	WESTERN STATES METAL ROOFING	T-GROOVE, 10"	3 SIDES; COLOR: BLDG DB DARK GRAY
5	SOFFIT	HEWN ELEMENTS	NATURAL NORTHWESTERN SPRUCE	1x6, T&G, 1/8" REVEAL, SEALED
6	STONE VENEER	ELDORADO STONE	CLIFFSTONE, BANFF SPRINGS; COLOR: PER MFR.	



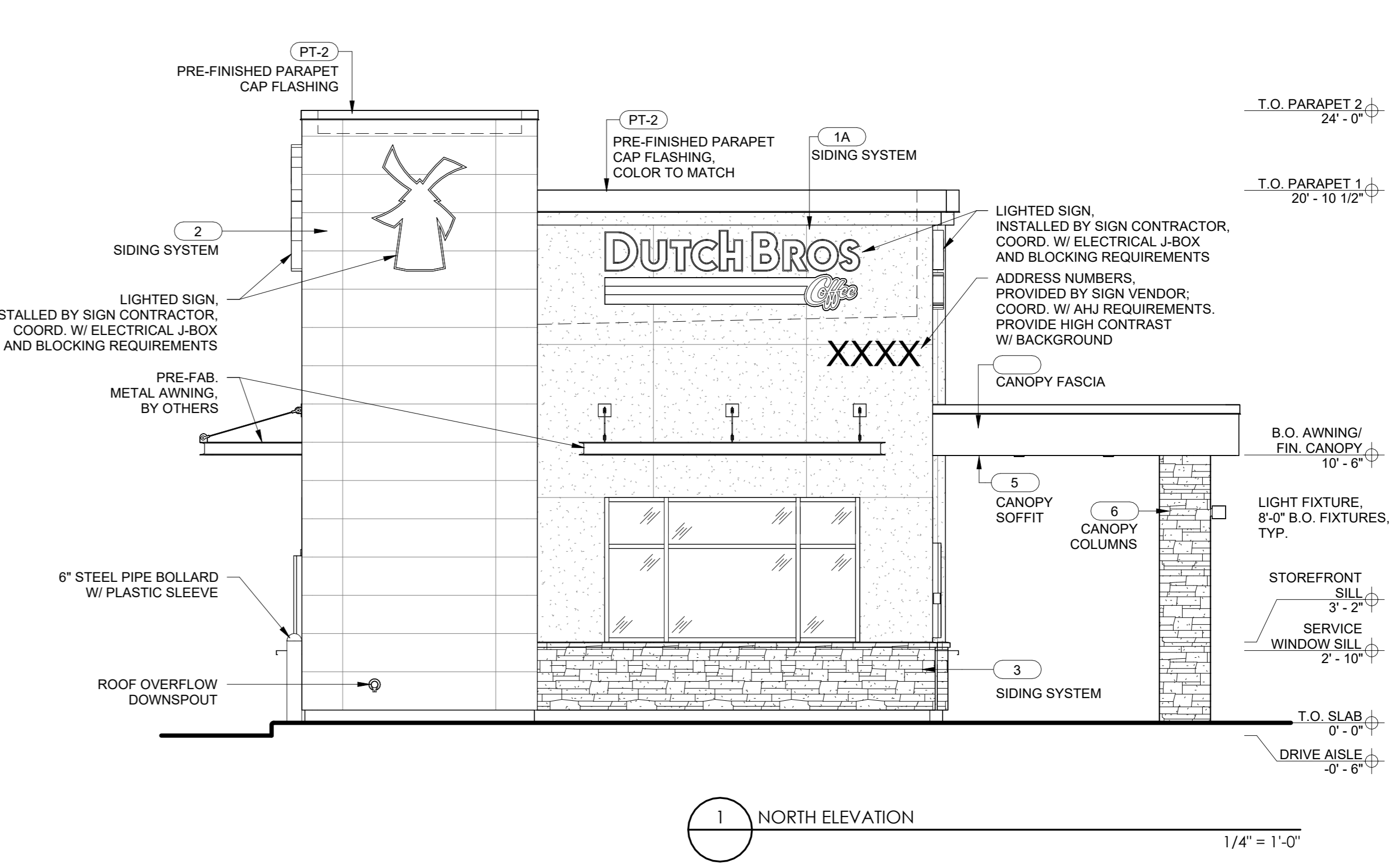
4 EAST ELEVATION - DRIVE-THRU WINDOW
1/4" = 1'-0"



3 SOUTH ELEVATION
1/4" = 1'-0"



2 WEST ELEVATION - WALK-UP WINDOW
1/4" = 1'-0"



1 NORTH ELEVATION
1/4" = 1'-0"



1001 SE SANDY BLVD, SUITE 100
PORTLAND, OR 97214
V. 503.552.9079
F. 503.241.7055
WWW.GNICHARCH.COM
01/31/25

Project No: CA3714
Dutch Bros Coffee - New Freestanding Store
SWQ 29 Farms Hwy,
Yucca Valley, CA 92284
For: Dutch Bros Coffee
110 SW 4th Street
Grants Pass, OR 97526

ISSUED FOR DESIGN REVIEW:
01.30.2025

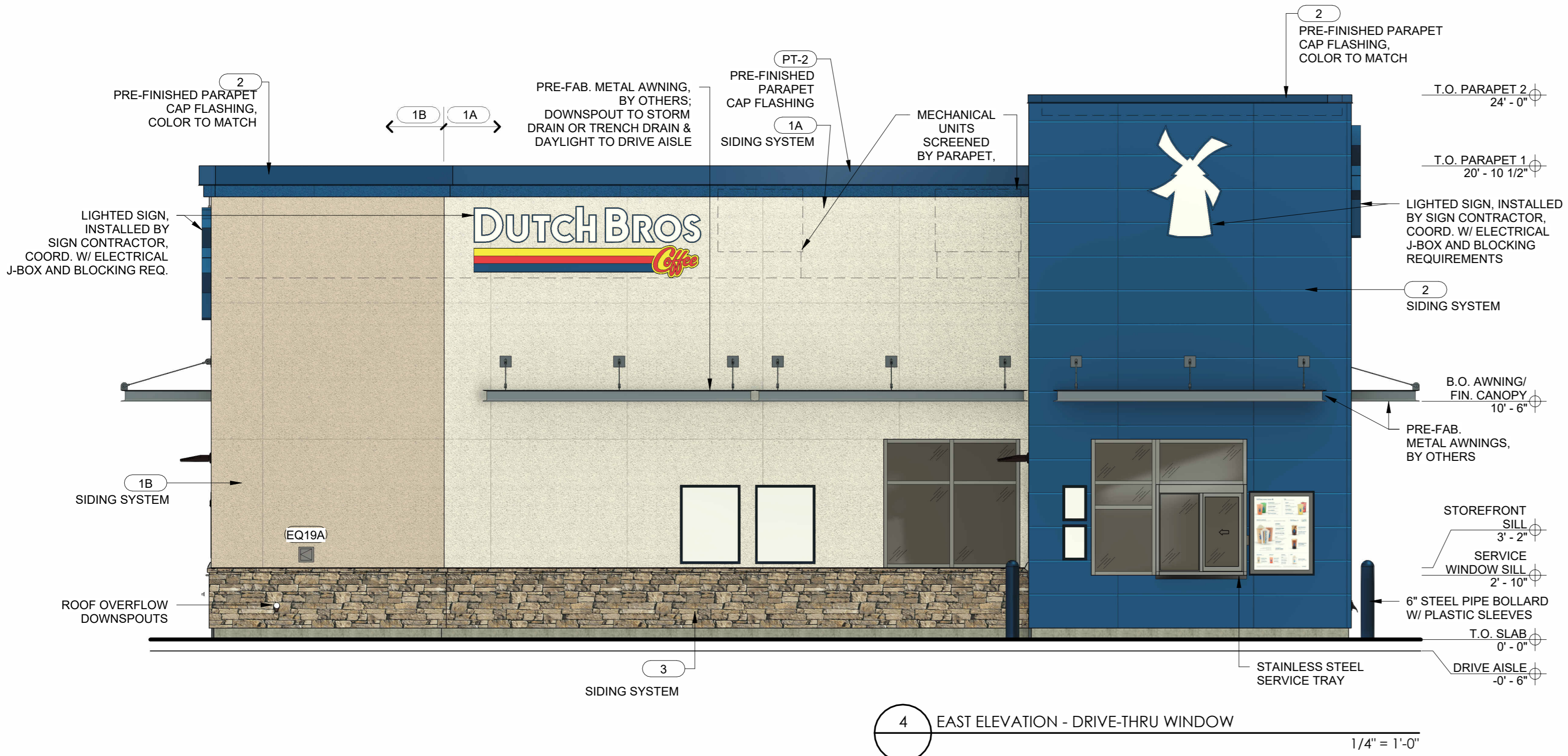
REV	DATE	DESCRIPTION

SHEET NAME:
BUILDING ELEVATIONS
SHEET NUMBER:

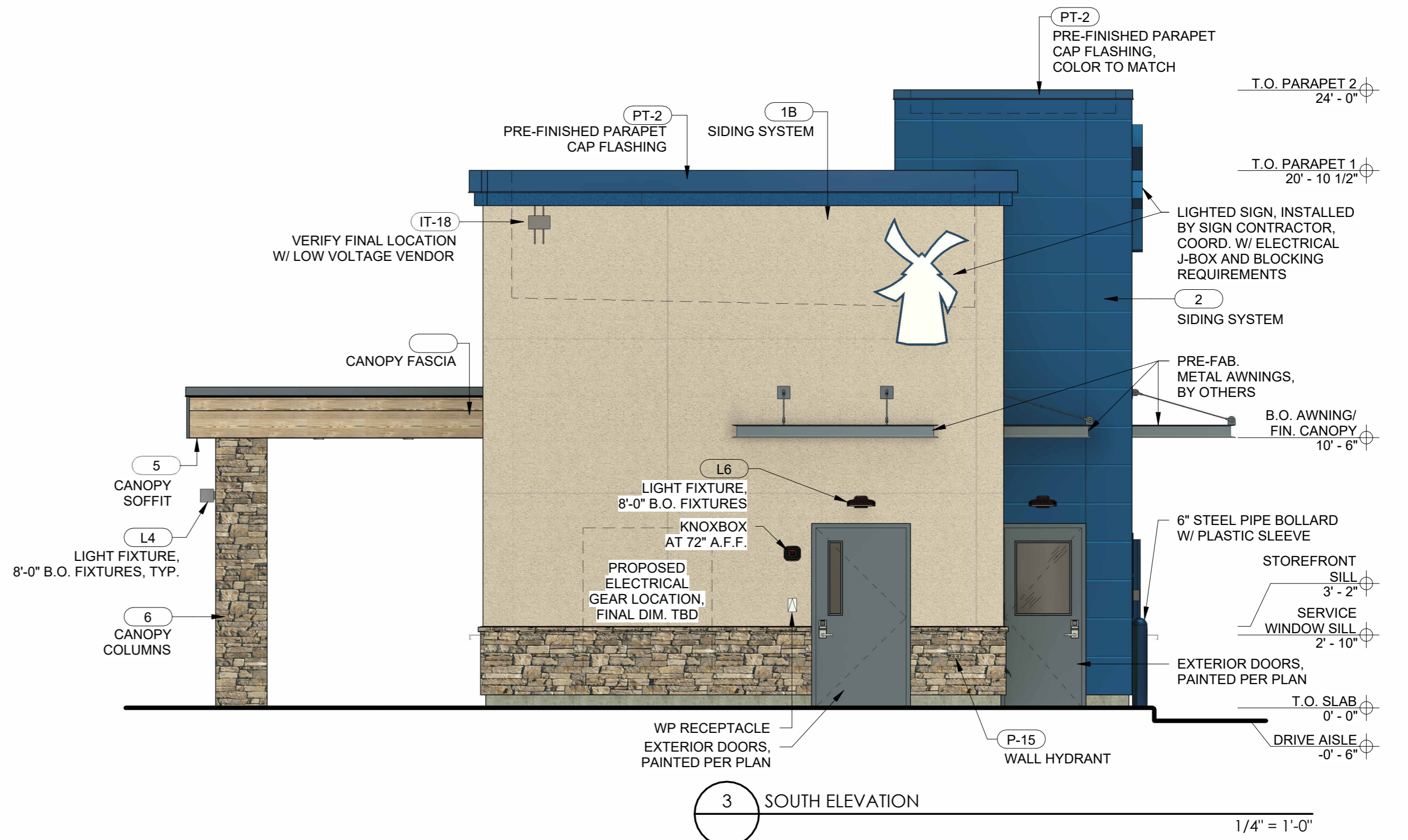
DRP2.0
© 2023 DB Franchising USA, LLC

The name DUTCHBROS, and all associated logos, distinctive designs, content, information, and other materials featured, displayed, contained herein, and made available by Dutch Bros, including but not limited to, the "look and feel" of the establishments and products, all text, images, colors, configurations, graphics, designs, illustrations, photographs, and pictures, collectively, the "Materials" are owned by and/or licensed by DB Franchising USA, LLC and are protected by copyright, trademark, trade dress, patent, and/or other intellectual property rights and unfair competition laws under the United States and foreign laws.

EXTERIOR FINISH SCHEDULE				
NOTE: GC TO PROVIDE 3"x2" SMOOTH DOWNSPOUTS AND ALL NECESSARY ADAPTORS AT AWNING AND CANOPY LOCATION; COLOR: BLDG DB DARK GRAY				
ID TAG	MATERIAL	MANUFACTURER	MODEL	REMARKS
ZONE 1 (BODY)				
1A	STUCCO	DRYVIT	CCP-2 SYSTEM, SANDPEBBLE FINE FINISH; REVEALS AS SHOWN	PAINTED; COLOR: CLASSIC LIGHT BUFF SW0050
1B	STUCCO	DRYVIT	CCP-2 SYSTEM, SANDPEBBLE FINE FINISH; REVEALS AS SHOWN	PAINTED; COLOR: RENWICK BEIGE SW2805
ZONE 2 (TOWER)				
2	FIBER CEMENT SIDING	NICHIHA	ILLUMINATION, AWP 1818 w/ FACTORY PANEL CORNERS	COLOR: BLDG DB BLUE
ZONE 3 (BASE)				
3	STONE VENEER	ELDORADO STONE	CLIFFSTONE, BANFF SPRINGS; COLOR: PER MFR.	
ZONE 4 (FRAMED CANOPY)				
4	FASCIA	WESTERN STATES METAL ROOFING	T-GROOVE, 10"	3 SIDES; COLOR: BLDG DB DARK GRAY
5	SOFFIT	HEWN ELEMENTS	NATURAL NORTHWESTERN SPRUCE	1x6, T&G, 1/8" REVEAL, SEALED
6	STONE VENEER	ELDORADO STONE	CLIFFSTONE, BANFF SPRINGS; COLOR: PER MFR.	



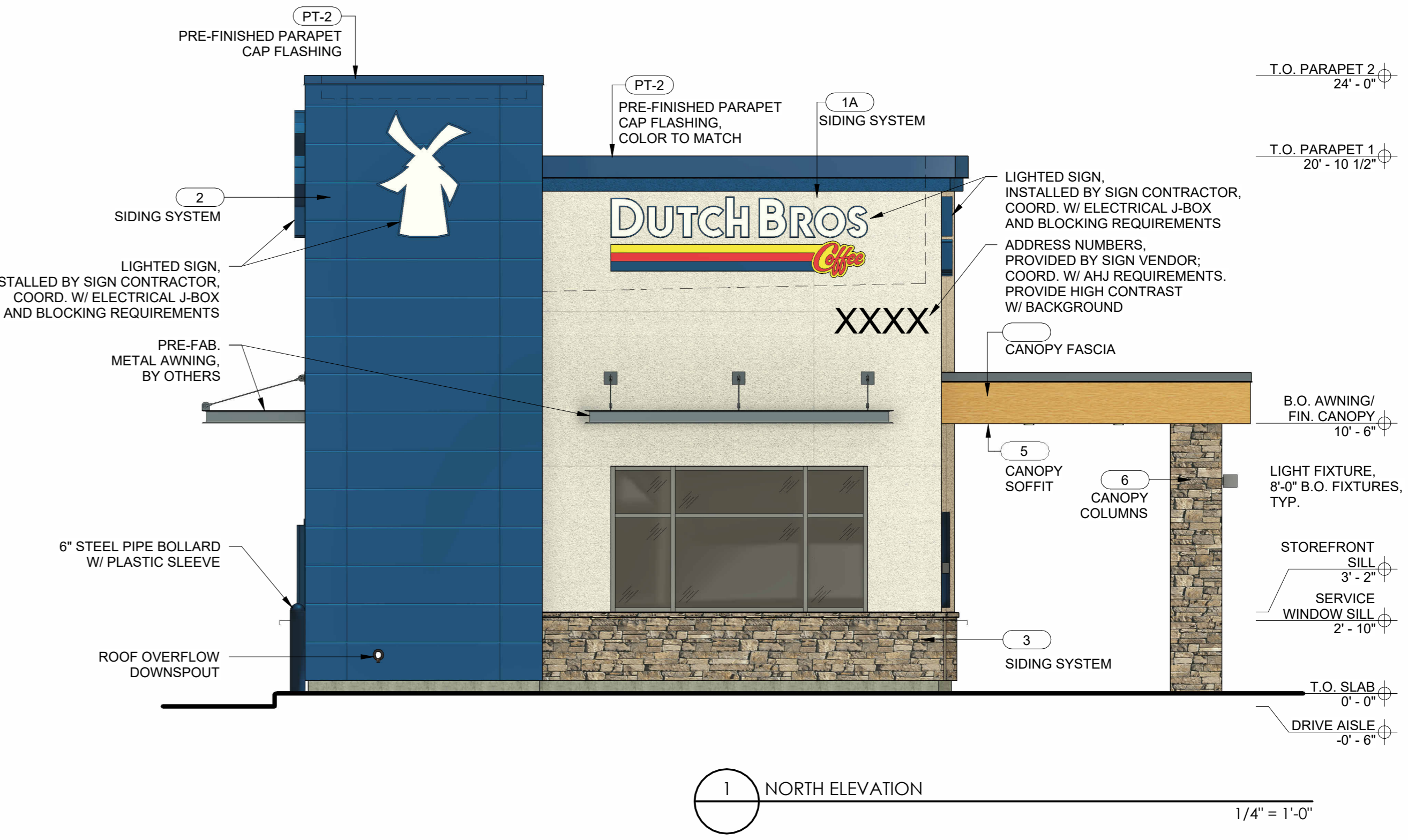
4 EAST ELEVATION - DRIVE-THRU WINDOW
1/4" = 1'-0"



3 SOUTH ELEVATION
1/4" = 1'-0"



2 WEST ELEVATION - WALK-UP WINDOW
1/4" = 1'-0"



1 NORTH ELEVATION
1/4" = 1'-0"



1001 SE SANDY BLVD, SUITE 100
PORTLAND, OR 97214
V. 503.552.9079
F. 503.241.7055
WWW.GNICHARCH.COM
01/31/25

Project No: CA3714
Dutch Bros Coffee - New Freestanding Store
SWQ 29 Palms Hwy,
Yucca Valley, CA 92284
For: Dutch Bros Coffee
110 SW 4th Street
Grants Pass, OR 97526

ISSUED FOR DESIGN REVIEW:
01.30.2025

REV	DATE	DESCRIPTION

SHEET NAME:
BUILDING ELEVATIONS
COLOR

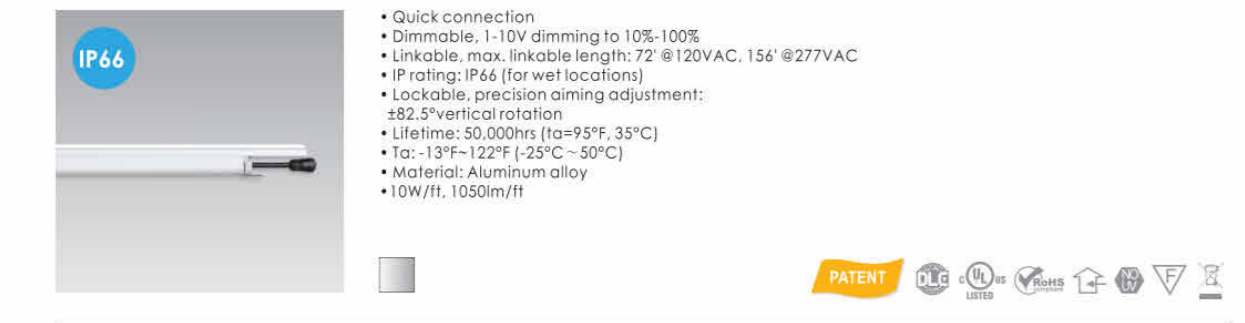
SHEET NUMBER:

DRP3.0
© 2023 DB Franchising USA, LLC

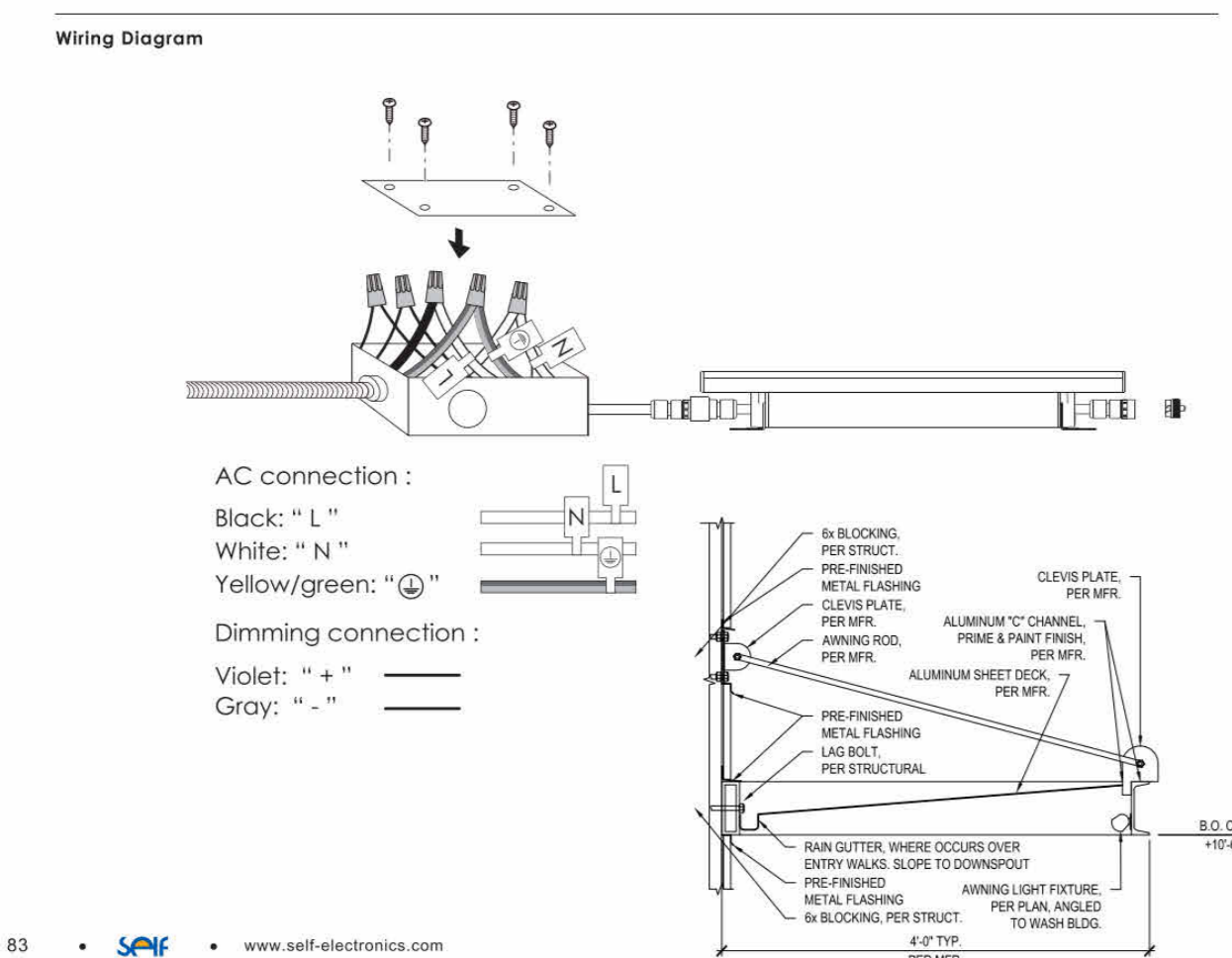
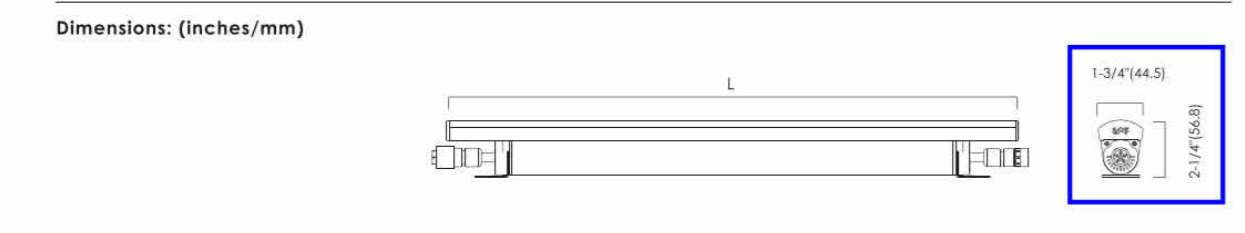
Imperial Lighting L7

Job: Dutch Brothers Coffee
Descr: Canopy 6' light

Outdoor Cove Lighting CROWN



- Quick connection
- Dimmable, 1-10V dimming to 10%-100%
- Unbreakable, max. linkable length: 7'7" @ 120VAC, 15' @ 277VAC
- Finishing: IP66 (for wet locations)
- Lockable, precision aiming adjustment:
- 82° Vertical rotation
- Lifetime: 50,000hrs (at 95%⁺, 35°C)
- Temp: -39° to 122°F (-39°C - 50°C)
- Material: Aluminum alloy
- 10W/ft, 1000lm/ft



83 • SEM • www.self-electronics.com

Outdoor Cove Lighting CROWN

How to order using our catalog numbers:
Example: CROWN-1230K105S

Series	Length	Color Temp	Beam Angle	Finish	Installation
CROWN	12 - 11.8" (302mm) 47 - 47" (1200mm) 70 - 70" (1778mm)	30K - 3000K 40K - 4000K	110 - 110°	1 - Silver	3 - Screw Mounting

Catalog No.	Model	Rated Input	Ro	Wattage	Luminous Flux (TP84000K)	Included
CROWN-1230K105S	CROWN-L24-277V	120-277VAC	85	10W	1050 lm	
CROWN-1240K105S	CROWN-L24-277V	120-277VAC	85	10W	1050 lm	
CROWN-4730K105S	CROWN-L90-277V	120-277VAC	85	40W	4200 lm	1 pc. LED Fixture 2pc. Screws 1pc. End cap
CROWN-4740K105S	CROWN-L90-277V	120-277VAC	85	40W	4200 lm	
CROWN-7030K105S	CROWN-L144-277V	120-277VAC	85	60W	6300 lm	
CROWN-7040K105S	CROWN-L144-277V	120-277VAC	85	60W	6300 lm	

How to choose your driver & cables:

Catalog No.	Description	Photo
IC-CROWN-59	Input cable 59"	

Optional:

Catalog No.	Description	Photo
SC-CROWN-12	Soft connector 12"	
TK-CROWN-79	Track 79", including 3pcs screws	

4 AWING FIXTURE NTS

Imperial Lighting L6

Job: Dutch Brothers Coffee Prototype
Descr: Exterior Wallpack

WPLED26Y/E RAB



Project: _____ Type: _____

Prepared By: _____ Date: _____

Driver Info

Type:	Constant Current	Watts:	26W
120V:	0.26A	Color Temp:	3000K
208V:	0.16A	Color Accuracy:	71 CRI
240V:	0.14A	L70 Lifespan:	100000
277V:	0.12A	Lumens:	3236
Input Watts:	26W	Efficiency:	112 LPW
Efficiency:	89%		

Technical Specifications

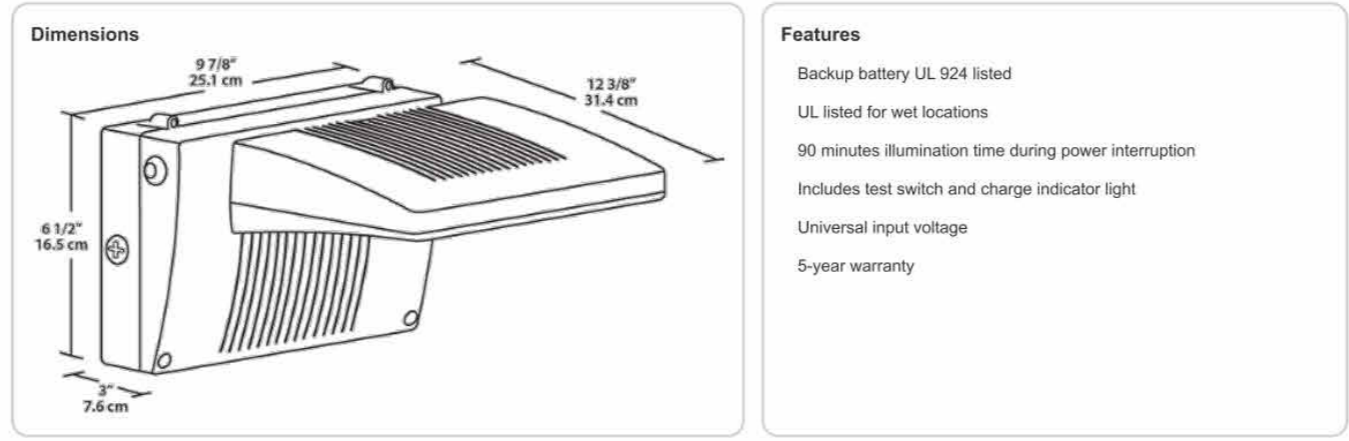
Other:
Battery Backup: Minimum starting temperature is 0°C/32°F.
Patents: The WPLED design is protected by U.S. Patent D634878 and Patents pending in the U.S., Canada, China, Taiwan and Mexico.
Equivalency: Equivalent to 175W Metal Halide.
FTC Country of Origin: This product was assembled in the USA by RAB using imported components.
Buy American Act Compliance: This product complies with the Buy American Act.
Listings: DLC Listed: This product is on the Design Lights Consortium (DLC) Qualified Products List and is eligible for rebates from DLC Member Utilities.
UL Listing: Suitable for Wet Locations as downlight. Wall Mount Only. Battery Backup UL 924 Listed Emergency Lighting Power Supply.

LED Characteristics:
Lifespan: 100,000-hour LED lifespan based on IES LM-80 results and TM-21 calculations.
LED: Two (2) 13W high-output, long-life LEDs.
Color Consistency: 3-step MacAdam Ellipse binning to achieve consistent fixture-to-fixture color.
Color Stability: High temperature silicone.
Color Uniformity: RAB's range of CCT (Correlated Color Temperature) follows the guidelines of the American National Standard for Specifications for the Chromaticity of Solid State Lighting (SSL) Products, ANSI C78.377-2017.

Battery Backup:
Backup Battery: Two fully-rechargeable, high-temperature, maintenance-free, nickel-cadmium batteries.
Construction: Precision die-cast aluminum housing, lens frame and mounting arm.
Ambient Temperature: Suitable for use in 35°C (95°F) ambient temperatures.
Gaskets: High temperature silicone.
Housing: Precision die-cast aluminum housing, lens frame and mounting arm.
Finish: Formulated for high-durability and long-lasting color.
Green Technology: Memory and UV free. RAB's compliant components. Polyester powder-coat finish formulated without the use of VOC or toxic heavy metals.
Optical: Formulated for high-durability and long-lasting color.
BUG Rating: B1 U0 G0

Need help? Tech help line: (888) RAB-1000 Email: sales@rabweb.com Website: www.rabweb.com
Copyright © 2018 RAB Lighting Inc. All Rights Reserved. Note: Specifications are subject to change at any time without notice.

WPLED26Y/E RAB



Ordering Matrix

Family	Wattage	Color Temp	Finish	Battery Backup	Photocell
WPLED	26 = 26W	Blank = 5000K (Cool) Y = 3000K (Warm) N = 4000K (Neutral)	Blank = Bronze W = White	BE = Battery Backup IEC = Cold Start Battery Backup	Blank = No Photocell PC = 120V Button PCB = 120V Sensor PC2 = 277V Sensor

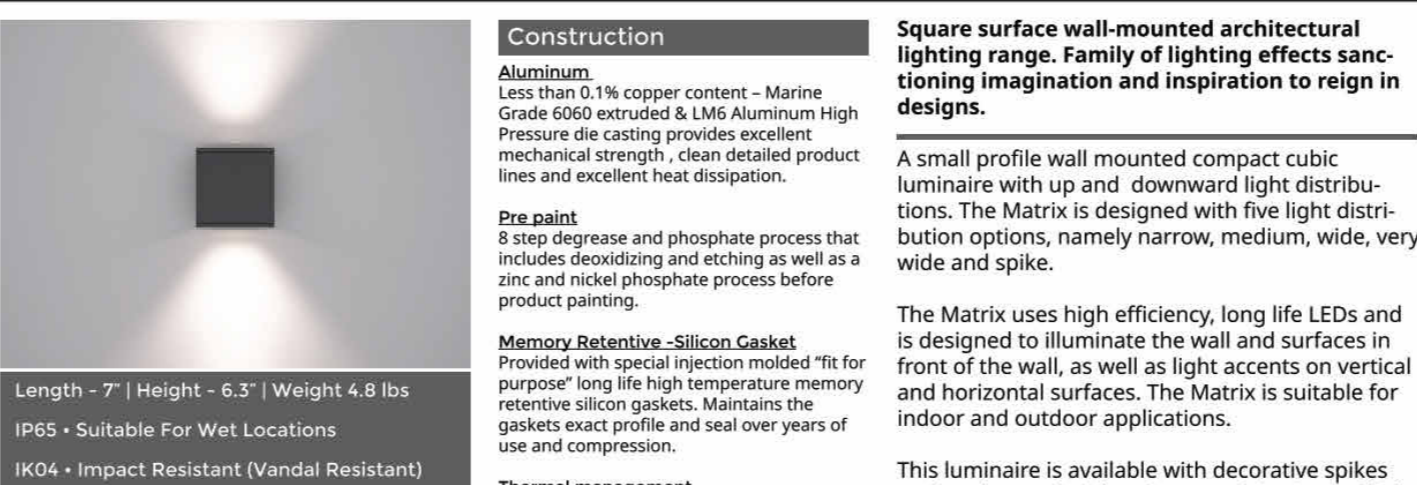
Verify required

Need help? Tech help line: (888) RAB-1000 Email: sales@rabweb.com Website: www.rabweb.com
Copyright © 2018 RAB Lighting Inc. All Rights Reserved. Note: Specifications are subject to change at any time without notice.

2 WALL PACK FIXTURE AT REAR DOOR NTS

Imperial Lighting L4

Job: Dutch Bros
Descr: Pole Head - Prototype Selection Dec. 2019



Construction: Aluminum. Less than 0.1% copper content - Marine Grade 6060 extruded 8 LMS Aluminum High Pressure die casting provides excellent mechanical strength, clean detailed product lines and excellent heat dissipation.

Pre-paint: 8 step degrease and phosphate process that includes descaling and etching as well as a zinc and nickel phosphate process before product painting.

Memory Retentive Silicon Gasket: Provided with special injection molded "fit for purpose" long life high temperature memory retentive silicon gaskets. Maintains the gaskets exact profile and seal over years of use and compression.

Thermal management: LMS Aluminum is used for its excellent mechanical strength and thermal dissipation properties in low and high ambient temperatures. The superior thermal heat sink design by Ligman used in conjunction with the drivers controls thermal below critical temperature range to ensure maximum luminous flux output, as well as providing long LED service life and ensuring less than 10% lumen depreciation at 50,000 hours.

Surge Suppression: Standard 10kv surge suppressor provided with all fixtures.

BUG Rating: B1 < 5° G0

Finishing: All Ligman products go through an extensive finishing process that includes fettling to improve paint adherence.

Paint: UV Stabilized 4.9Ml thick powder coat paint and baked at 200 deg C. This process ensures that Ligman products can withstand harsh environments. Rated for use in natatoriums.

Hardware: Provided Hardware is Marine grade 316 Stainless steel.

Anti-Seize Screw Holes: Tapped holes are infused with a special anti-seize compound designed to prevent seizure of threaded connections, due to electrolysis from heat, corrosive atmospheres and moisture.

Crystal Clear Low Iron Glass Lens: Provided with tempered, impact resistant crystal clear low iron glass ensuring no green glass tinge.

Optics & LED: Precise optic design provides exceptional light control and precise distribution of light. LED CRI = 80

Lumen - Maintenance Life: L80 B10 at 50,000 hours (This means that at least 80% of the LED still achieve 80% of their original flux).

Images depicting the lighting design capabilities of the Matrix 3 Surface lighting fixture. See the technical specifications on LED lighting and components for design details.

4 AWING FIXTURE NTS

Imperial Lighting P

Job: Dutch Bros
Descr: Pole Head - Prototype Selection Dec. 2019

AREA LIGHTING

FORM AND FUNCTION

- Sleek, low profile housing
- Spec grade performance
- Engineered for optimum thermal management
- Low depreciation rate
- Reduces energy consumption and costs up to 65%
- Exceeds IES foot candle levels utilizing the least number of poles and fixtures per project
- Optical system designed for:
 - Parking Lots
 - Auto Dealerships
 - General Area Lighting

CONSTRUCTION

- Die Cast Aluminum
- External cooling fins, Finite Element Analysis (FEA) designed
- Corrosion resistant external hardware
- One-piece silicone gasket ensures IP-65 seal for electronics compartment
- One-piece Optics Plate* mounting silicone Micro Optics
- Two-piece silicone Micro Optic system ensures IP-67 level seal around each PCB
- Grade 2 Clear Anodized Optics Plate* standard

FINISH

- 3-5 mils electrostatic powder coat.
- NLS' standard high-quality finishes prevent corrosion protects against extreme environmental conditions

WARRANTY

Five-year limited warranty for drivers and LEDs.

LISTINGS

- Certified to UL 1598
- UL 8750
- CSA C22.2 No. 250.0
- DesignLights Consortium® (DLC)
- DesignLights Consortium Premium™ (DLC P)
- IP65/ IP67 Rated
- 3G Vibration Rated per ANSI C136.31-2010

LED WATTAGE CHART

	10L	22L	44L	64L
350 millamps	10w	20w	30w	40w
500 millamps	20w	30w	40w	50w
700 millamps	30w	40w	50w	60w
1000 millamps	40w	50w	60w	70w

Project Name: _____ Type: _____

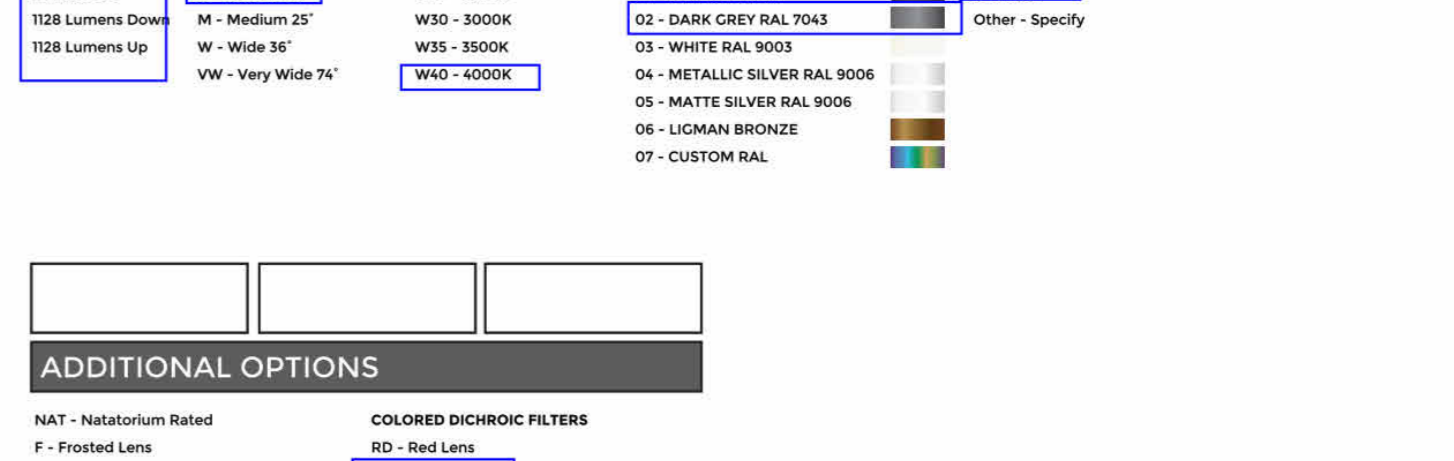
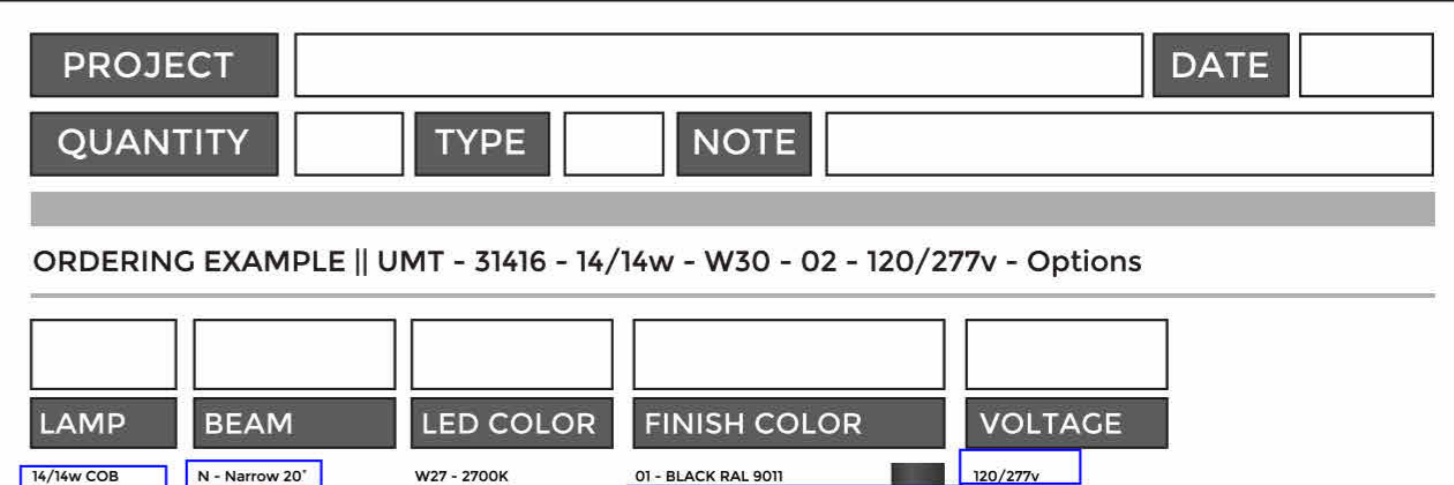
Cat #	Light Dist.	No. of LEDs	Millamps	Kelvin	Volts	Mounting	Color	Options
INV-311 (NV-31)	Type 2 (T2)	16 (16A)	350	3000K	120-277V	Architectural Street Arm (ASA)	Black (BR2)	Bird Deterrent (BD) Marine Grade Finish (MGF) Optic Plate Painted to Match (OPP) Nema 7-Pin Receptacle (PET) Protocell Receptacle (PR) Receptacle - Shorting Cap (RSC) RSP-20 2' Pole Adapter (RSP-20) RSP-40 4' Pole Adapter (RSP-40) Surge Protector (SP)
Type 3 (T3)	48 (48L)	50 (50L)	530	4000K (40K)	347-480 (HV)		White (WT) Silver (SVR) Black (BLK)	
Type 4 (T4)		750	5000K (50K)				Graphite (GRP) Grey (GRY)	Round Pole Adaptor 3'-4' Pole (RPA4) Round Pole Adaptor 5'-6' Pole (RPA5) Rotated Optic Right (ROL) Rotated Optic Left (LOL) Automotive House Side Shield (AHS) House Side Shield (HSS)
Type 6 (T6)	Nema 2 24" narrow beam (N2)						Custom (CS)	*HSS not applicable with N2 - NEMA 30° Optics *HSS not applicable with N3 - NEMA 30° Optics
Nema 3 30" narrow beam (N3)								

Need help? Tech help line: (888) RAB-1000 Email: sales@rabweb.com Website: www.rabweb.com
Copyright © 2018 RAB Lighting Inc. All Rights Reserved. Note: Specifications are subject to change at any time without notice.

2 WALL PACK FIXTURE AT REAR DOOR NTS

Imperial Lighting L4

Job: Dutch Bros
Descr: Pole Head - Prototype Selection Dec. 2019



Construction: Aluminum. Less than 0.1% copper content - Marine Grade 6060 extruded 8 LMS Aluminum High Pressure die casting provides excellent mechanical strength, clean detailed product lines and excellent heat dissipation.

Pre-paint: 8 step degrease and phosphate process that includes descaling and etching as well as a zinc and nickel phosphate process before product painting.

Memory Retentive Silicon Gasket: Provided with special injection molded "fit for purpose" long life high temperature memory retentive silicon gaskets. Maintains the gaskets exact profile and seal over years of use and compression.

Thermal management: LMS Aluminum is used for its excellent mechanical strength and thermal dissipation properties in low and high ambient temperatures. The superior thermal heat sink design by Ligman used in conjunction with the drivers controls thermal below critical temperature range to ensure maximum luminous flux output, as well as providing long LED service life and ensuring less than 10% lumen depreciation at 50,000 hours.

Surge Suppression: Standard 10kv surge suppressor provided with all fixtures.

BUG Rating: B1 < 5° G0

Finishing: All Ligman products go through an extensive finishing process that includes fettling to improve paint adherence.

Paint: UV Stabilized 4.9Ml thick powder coat paint and baked at 200 deg C. This process ensures that Ligman products can withstand harsh environments. Rated for use in natatoriums.

Hardware: Provided Hardware is Marine grade 316 Stainless steel.

Anti-Seize Screw Holes: Tapped holes are infused with a special anti-seize compound designed to prevent seizure of threaded connections, due to electrolysis from heat, corrosive atmospheres and moisture.

Crystal Clear Low Iron Glass Lens: Provided with tempered, impact resistant crystal clear low iron glass ensuring no green glass tinge.

Optics & LED: Precise optic design provides exceptional light control and precise distribution of light. LED CRI = 80

Lumen - Maintenance Life: L80 B10 at 50,000 hours (This means that at least 80% of the LED still achieve 80% of their original flux).

Images depicting the lighting design capabilities of the Matrix 3 Surface lighting fixture. See the technical specifications on LED lighting and components for design details.

3 SCONCE FIXTURE AT CANOPY COLUMN NTS

Imperial Lighting P

Job: Dutch Bros
Descr: Pole Head - Prototype Selection Dec. 2019

AREA LIGHTING

FORM AND FUNCTION

- Sleek, low profile housing
- Spec grade performance
- Engineered for optimum thermal management
- Low depreciation rate
- Reduces energy consumption and costs up to 65%
- Exceeds IES foot candle levels utilizing the least number of poles and fixtures per project
- Optical system designed for:
 - Parking Lots
 - Auto Dealerships
 - General Area Lighting

CONSTRUCTION

- Die Cast Aluminum
- External cooling fins, Finite Element Analysis (FEA) designed
- Corrosion resistant external hardware
- One-piece silicone gasket ensures IP-65 seal for electronics compartment
- One-piece Optics Plate* mounting silicone Micro Optics
- Two-piece silicone Micro Optic system ensures IP-67 level seal around each PCB
- Grade 2 Clear Anodized Optics Plate* standard

FINISH

- 3-5 mils electrostatic powder coat.
- NLS' standard high-quality finishes prevent corrosion protects against extreme environmental conditions

WARRANTY

Five-year limited warranty for drivers and LEDs.

LISTINGS

- Certified to UL 1598
- UL 8750
- CSA C22.2 No. 250.0
- DesignLights Consortium® (DLC)
- DesignLights Consortium Premium™ (DLC P)
- IP65/ IP67 Rated
- 3G Vibration Rated per ANSI C136.31-2010

LED WATTAGE CHART

	10L	22L	44L	64L
350 millamps	10w	20w	30w	40w
500 millamps	20w	30w	40w	50w
700 millamps	30w	40w	50w	60w
1000 millamps	40w	50w	60w	70w

Project Name: _____ Type: _____

Cat #	Light Dist.	No. of LEDs	Millamps	Kelvin	Volts	Mounting	Color	Options
INV-311 (NV-31)	Type 2 (T2)	16 (16A)	350	3000K	120-277V	Architectural Street Arm (ASA)	Black (BR2)	Bird Deterrent (BD) Marine Grade Finish (MGF) Optic Plate Painted to Match (OPP) Nema 7-Pin Receptacle (PET) Protocell Receptacle (PR) Receptacle - Shorting Cap (RSC) RSP-20 2' Pole Adapter (RSP-20) RSP-40 4' Pole Adapter (RSP-40) Surge Protector (SP)
Type 3 (T3)	48 (48L)	50 (50L)	530	4000K (40K)	347-480 (HV)		White (WT) Silver (SVR) Black (BLK)	
Type 4 (T4)		750	5000K (50K)				Graphite (GRP) Grey (GRY)	Round Pole Adaptor 3'-4' Pole (RPA4) Round Pole Adaptor 5'-6' Pole (RPA5) Rotated Optic Right (ROL) Rotated Optic Left (LOL) Automotive House Side Shield (AHS) House Side Shield (HSS)
Type 6 (T6)	Nema 2 24" narrow beam (N2)						Custom (CS)	*HSS not applicable with N2 - NEMA 30° Optics *HSS not applicable with N3 - NEMA 30° Optics
Nema 3 30" narrow beam (N3)								

Need help? Tech help line: (888) RAB-1000 Email: sales@rabweb.com Website: www.rabweb.com
Copyright © 2018 RAB Lighting Inc. All Rights Reserved. Note: Specifications are subject to change at any time without notice.

6 CANOPY SOFFIT FIXTURE NTS

The name DUTCHBROS. and all associated logos, distinctive designs, content, information, and other materials featured, displayed, contained herein, and made available by Dutch Bros., including but not limited to, the "look and feel" of the establishments and products, all text, images, colors, configurations, graphics, designs, illustrations, photographs, and pictures, collectively, the "materials" are owned by and/or licensed by DB Franchising USA, LLC and are protected by copyright, trademark, trade dress, patent, and/or other intellectual property rights and unfair competition laws under the United States and foreign laws.



1001 SE SANDY BLVD, SUITE 100
PORTLAND, OR 97214
V. 503.552.9079
F. 503.241.7055
WWW.GNICHARCH.COM

01/31/25

Project No: CA3714
Dutch Bros Coffee - New Freestanding Store
SWQ 29 Farms Hwy,
Yucca Valley, CA 92284
For: Dutch Bros Coffee
110 SW 4th Street
Grants Pass, OR 97526

ISSUED FOR DESIGN REVIEW:
01.30.2025

REV	DATE	DESCRIPTION

SHEET NAME:

LIGHTING SPECS.

SHEET NUMBER:

DRP5.0

© 2023 DB Franchising USA, LLC

REV	DATE	DESCRIPTION

SHEET NAME:

LIGHTING SPECS.

SHEET NUMBER:

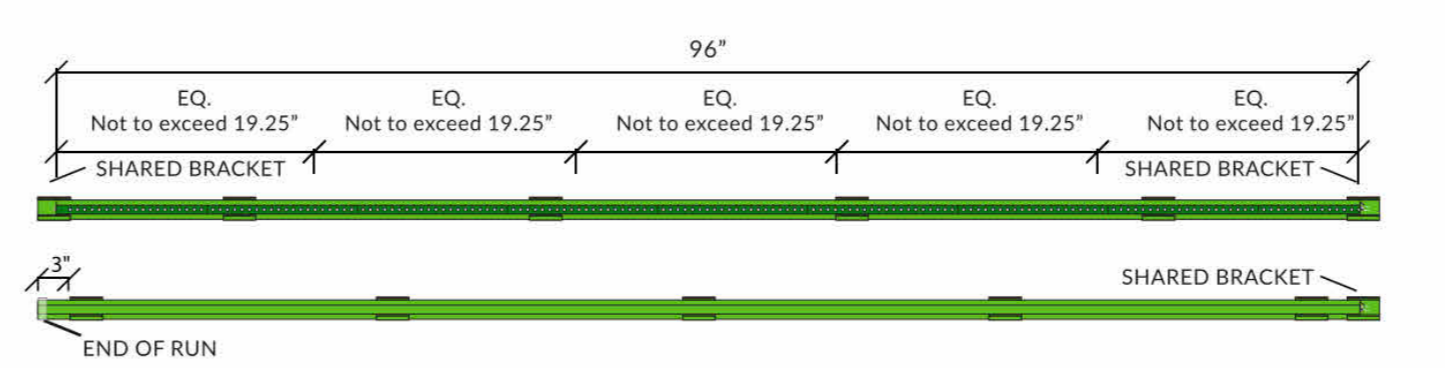
DRP5.1

SECTION	PAGE
1. 48 Board Track Mounting Bracket Layout.....	2
2. Installing Track into Mounting Brackets.....	3
3. Custom Cut to Fit End of Runs & Corners.....	4
4. Mounting Track on an Incline.....	5
5. Frame Border Installation.....	6
6. Connecting Power Supplies.....	7
7. Testing Each Section.....	8

DETAILS	LED SPECIFICATIONS
<p>Input: 120-277 VAC</p> <p>Output: 24 VDC (Philips Advance)</p> <p>Max. Load Footage: 64 Linear Ft. 20L</p> <p>Watts per Foot: 1.50 (if 20L)</p> <p>Dimming Capable: Yes</p> <p>Bending Parameters: Factory bends available</p> <p>Limited Warranty Terms: 7 Years</p> <p>Materials: PVC, UV and impact resistant</p> <p>Dimensions: Laser 1.70 x 1.70, Leon 2.00 x 1.70</p> <p>Certification: cULus E174914</p>	<p>12" LED boards pull close to the same voltage as shorter break-apart boards. Maximum of 3-3' boards per circuit. No more than 48 boards on a circuit. Do not connect more than one power supply per circuit.</p> <p>LEON*</p> <p>LASER*</p>

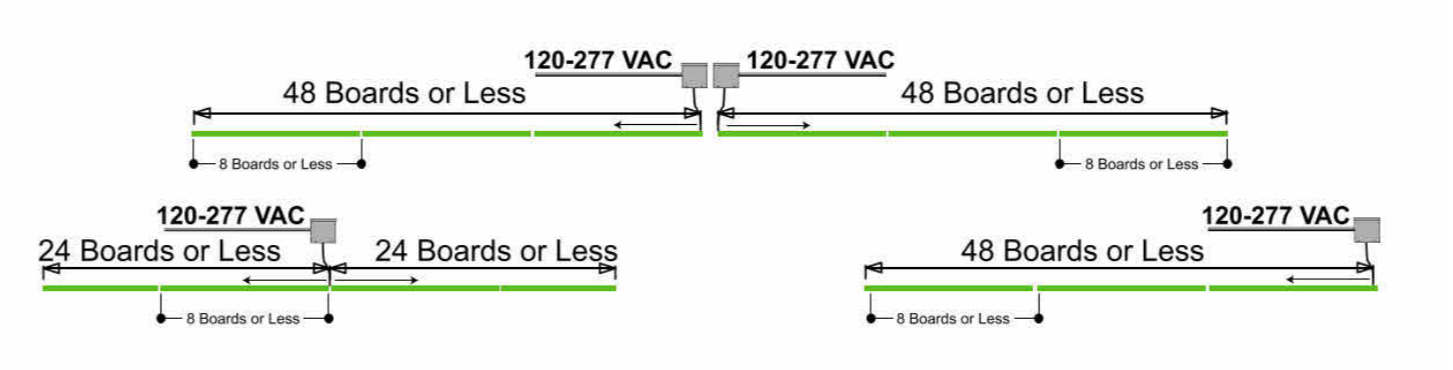
ACCESSORIES:	REQUIRED TOOLS:
<p>185-0154 180V</p> <p>185-0030 STRAIN RELIEF</p> <p>185-5049 4" X 3" PAN HEAD SCREW</p> <p>185-0007 PVC CABLE</p> <p>185-5009 #10-16 X 3/4" TRS SCREW</p> <p>12" 24 LAMP MAIN BOARD</p> <p>185-1976 Philips Advance 100W 24V LOW VOLTAGE POWER SUPPLY</p> <p>3.00" 6L BREAK-APART BOARD</p> <p>185-5023 BLUE WIRE NUT</p>	<p>25' Measuring Tape</p> <p>100' Measuring Tape</p> <p>Framing Square</p> <p>Square (1")</p> <p>Portable Rechargeable Drill 3/16" Hexbit and unibit</p> <p>Masonry Bits (if brick wall)</p> <p>Extension Cord</p> <p>Sawall or Compound Saw</p> <p>Carpenter Pencil</p> <p>Caulk Gun</p> <p>Box Knife</p> <p>Wire Strippers</p> <p>Wire Snips</p> <p>Laser Tool or Chalk Line</p> <p>Substitute Fasteners for the Application if Applicable</p>

SEC. 1 48 BOARD TRACK MOUNTING BRACKET LAYOUT



- Using a chalk line, gauge, laser level, or other means to be certain run is straight, marking locations for brackets.
- Border / perimeter of sign cabinets should always have orientation of Laser/Leon housing raised lip outboard on vertical or diagonal. Orient brackets so that the drain holes will be on the bottom side of the horizontal runs.
- Install mounting brackets, 6 per 8' section including shared brackets. Use pre-drilled wire hole mounting brackets at power supply locations.

NOTE: Track sections share a bracket at the ends to keep ends together and straight there MUST BE A SPACE left between 8' plastic track sections (NOT LEDS) of 3/16"

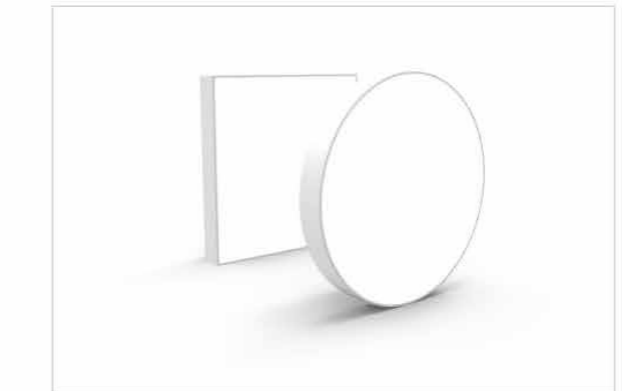


Tip: Install end bracket after housing has been installed into previous brackets by sliding over end to ensure bracket is centered between sections. Place mounting brackets 3" on center from corners.

NOTE: MAXIMUM 48 BOARDS PER POWER SUPPLY. SHOWN 3 CONFIGURATIONS.

6 PARAPET 2 STRIP LIGHT FIXTURE NTS

dmf L9 DRD5S Surface Mount LED Downlight Retrofit Junction Box



DRD5S
 Surface Mount LED Module

SUMMARY

LED: Optimized LED array

SHAPE: 4" Round, 4" Square

MODULE LUMENS: 750 lm (9.0W), 1000 lm (12.0W)

COLOR QUALITY: 90+ CRI, less than 3-step SDCM

CCT: 2700K, 3000K, 3500K

INPUT VOLTAGE: 120/277V

DIMMING: Down to less than 5% for TRIAC/ELV at 120V, 1% for 0-10V at 120/277V

MAX INPUT CURRENT (120V): 0.075 amps, 0.1047 amps

MAX INPUT CURRENT (277V): 0.034 amps, 0.047 amps

POWER FACTOR: Greater than 0.9

TOTAL HARMONIC DISTORTION: Less than 20%

AMBIENT OPERATING TEMPERATURE: -20°C to 40°C

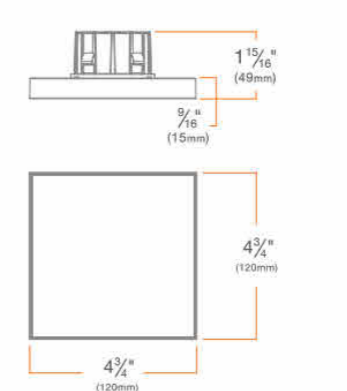
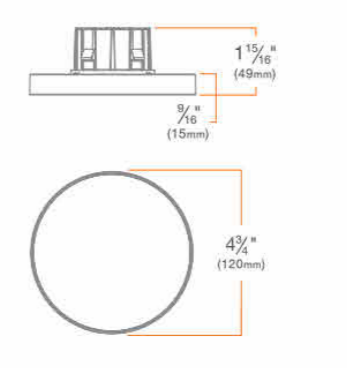
PHOTOMETRIC TESTING: Tested in accordance to IESNA LM-79-2008

TRIM: Edgeless die-cast aluminum

LISTINGS: ENERGY STAR® qualified, California Title 24 2016 JAB compliant, UL Listed for Wet Location, cULus Listed

LIFETIME: 50,000 hours at 70% lumen maintenance

WARRANTY: 5 year limited warranty

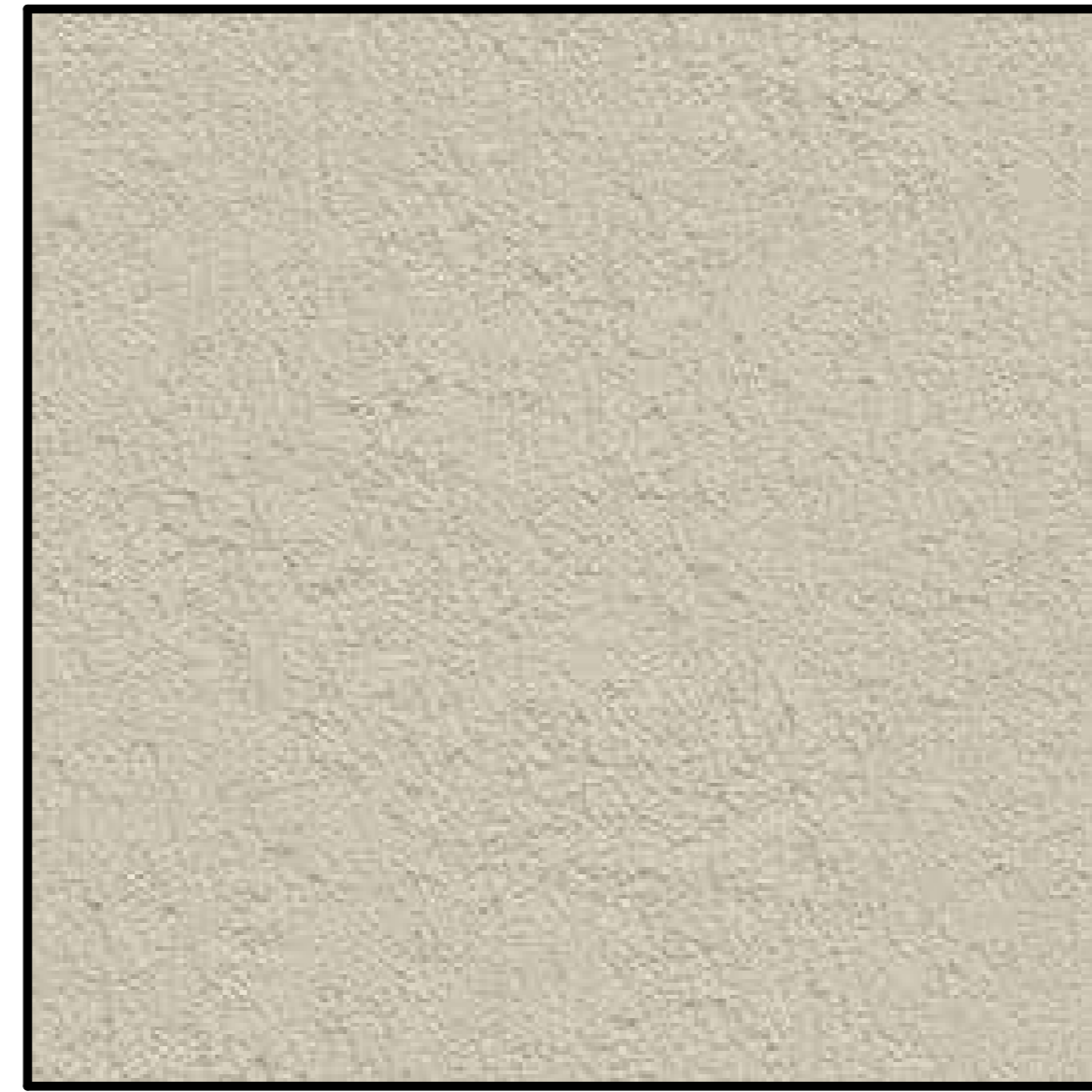


5 CANOPY SOFFIT FIXTURE NTS

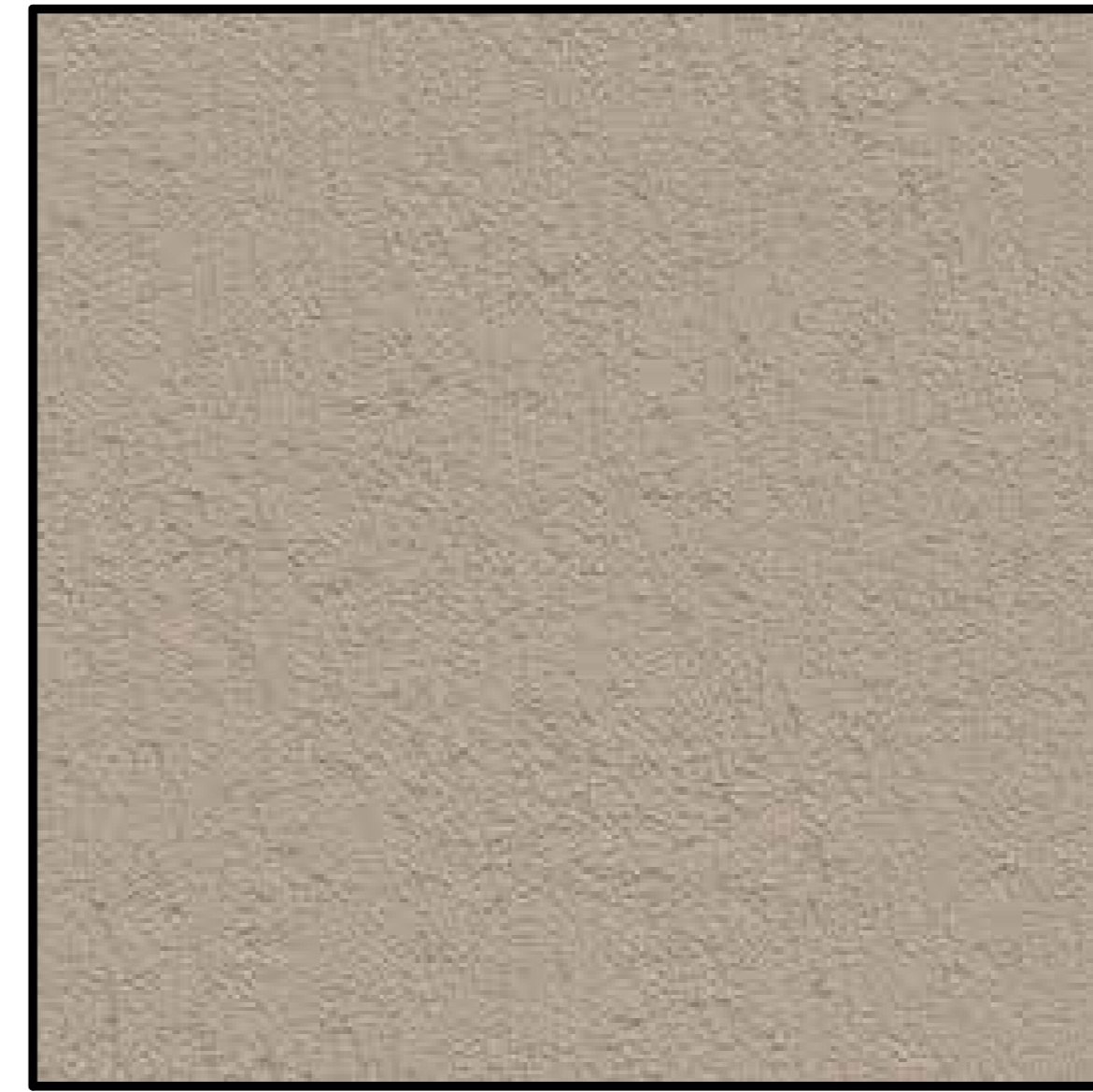
The name DUTCHBROS and all associated logos, distinctive designs, content, information, and other materials featured, displayed, contained herein, and made available by Dutch Bros, including but not limited to, the "look and feel" of the establishments and products, all text, images, colors, configurations, graphics, designs, illustrations, photographs, and pictures (collectively, the "Materials") are owned by and/or licensed by DB Franchising USA, LLC and are protected by copyright, trademark, trade dress, patent, and/or other intellectual property rights and unfair competition laws under the United States and foreign laws.



FIBER CEMENT BOARD
 MANUFACTURER: NICHHA
 PROFILE: ILLUMINATION
 COLOR: BLDG DB BLUE



STUCCO SYSTEM
 MANUFACTURER: DRYVIT
 PROFILE: CCP-2 SYSTEM,
 SANDPEBBLE FINE E FINISH
 COLOR: PAINTED, CLASSIC LIGHT BUFF



STUCCO SYSTEM
 MANUFACTURER: DRYVIT
 PROFILE: CCP-2 SYTEM,
 SANDPEBBLE FINE E FINISH
 COLOR: PAINTED, RENWICK BEIGE



CULTURED STONE
 MANUFACTURER: ELDORADO STONE
 PROFILE: CLIFFSTONE - MONTECITO
 COLOR: PER MFR.



CANOPY SOFFIT
 MANUFACTURER: HEWN
 PROFILE: NW SPRUCE
 NATURAL & SEALED
 COLOR: PER MFR.



WINDOW SYSTEM
 MANUFACTURER: KAWNEER OR SIMILAR
 PROFILE: CLEAR ANODIZED ALUMINUM
 FINISH: CLEAR NO 14 / 17



AWNINGS & DOORS - PAINT
 MANUFACTURER: SHERWIN-WILLIAMS
 COLOR: BLDG DB GRAY DARK



ROOFING MATERIAL
 MANUFACTURER: DURO-LAST
 DL-60 - 60 MIL
 COLOR: WHITE



1001 SE SANDY BLVD, SUITE 100
 PORTLAND, OR 97214
 V. 503.552.9079
 F. 503.241.7055
 WWW.GNICHARCH.COM
 01/31/25

Project No: CA3714
 Dutch Bros Coffee - New Freestanding Store
 SWQ 29 Palms Hwy,
 Yucca Valley, CA 92284
 For: Dutch Bros Coffee
 110 SW 4th Street
 Grants Pass, OR 97526
 DB2550-A-1SQ

ISSUED FOR DESIGN
 REVIEW:
 01.30.2025

REV	DATE	DESCRIPTION

SHEET NAME:

MATERIAL BOARD

SHEET NUMBER:

DRP6.0